

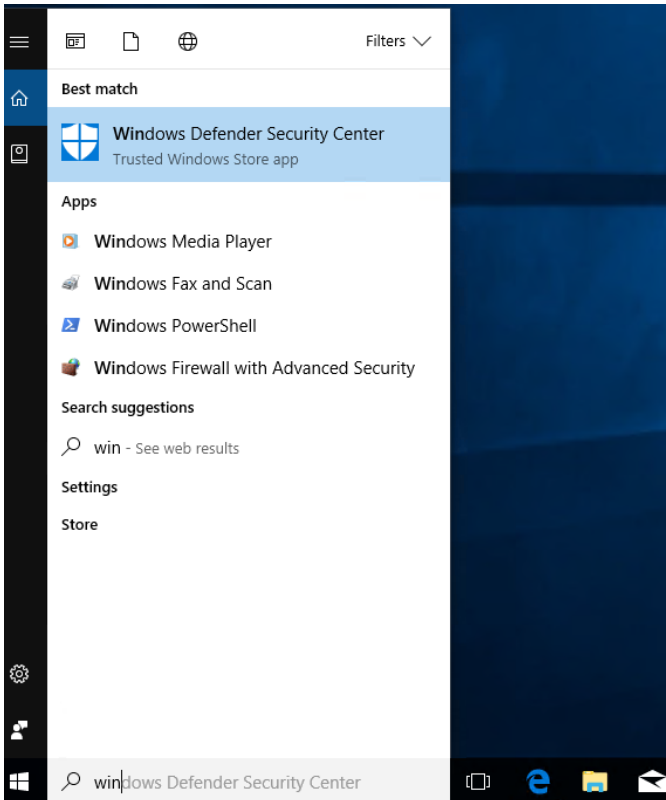
Setting required exclusions in Windows Defender

This procedure is only required for systems deployed with an OS prior to Win 10 IoT (LTSC /LTSC).

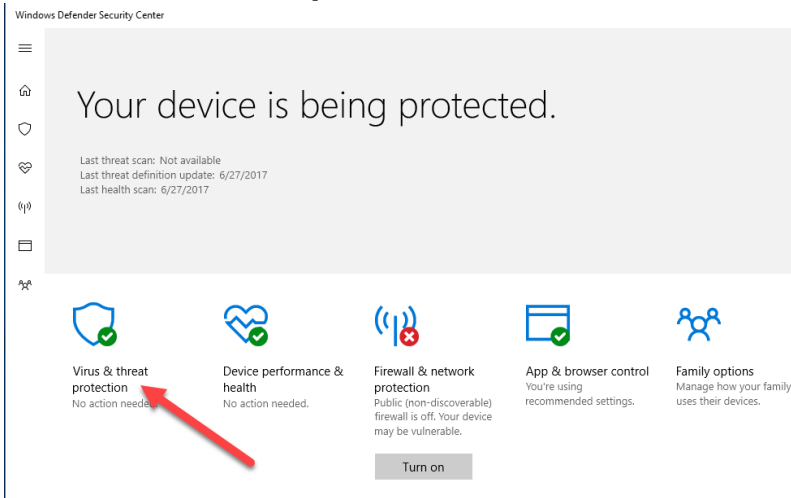
Before you can set the required proofing folder exclusions in Defender, the folders need to be installed by the proofing software installer. You can then proceed to configure exclusions for files and folders that require read and write access.

Note: If you prefer a third-party antivirus solution, continue configuring Defender exclusions and allow the third-party tool to provide protection until you finish setting up the proofing system. After that, it is your responsibility to set up the software you are using to replace Defender. You may find Partner Place Answer 43544 helpful (requires Partner Place login). The information in this answer uses McAfee software as an example of recommended settings. The excluded file types require read and write access, and the excluded file locations must include subfolders.

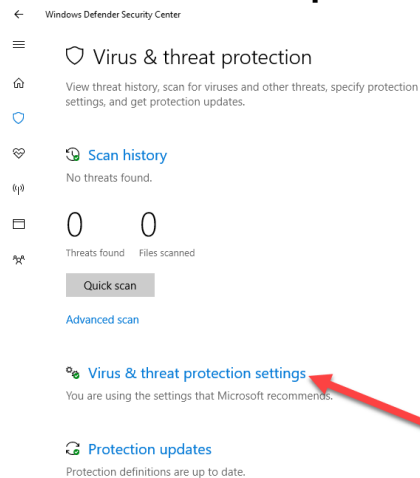
1. In the search box, type `windows defender security center` and then select it from the list of matches.



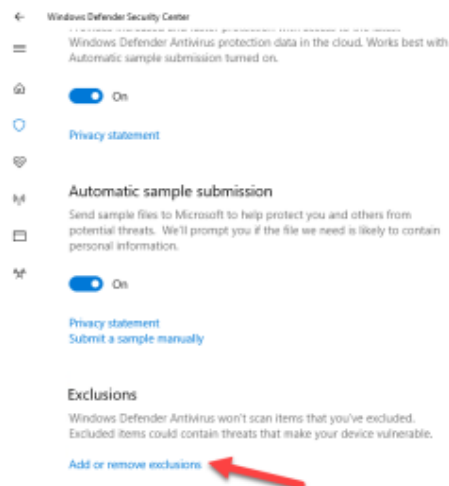
2. Click **Virus & threat protection**.



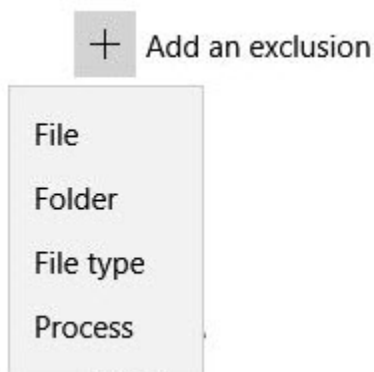
3. Click **Virus & threat protection settings**.



4. Scroll to **Exclusions** and click **Add or remove exclusions**.



5. Click **Add an exclusion** to display the following list:



6. Repeat for each of the following paths: click **Folder**, locate and select the folder, and click **Select Folder**:

Note: If RSS is not installed, the C:\Program Files (x86)\Kodak folder will not be included in the list. If this is the case, create the folder and then exclude it.

- C:\Creo
- C:\Program Files (x86)\Kodak
- C:\Program Files (x86)\MATLAB
- C:\Program Files (x86)\TightVNC
- D:\Program Files\Kodak

7. Repeat for each of the following file name extensions: click **File type**, type the characters, and click **Add**.

- CAB
- creotif
- install
- JAR
- PDF
- TIF
- XML
- ZIP

8. Repeat for each of the following processes: click **Process**, type the process name, and click **Add**.

- Bonjour Service (might already be excluded)
- ProoferService.exe
- ColorEngineDaemon.exe
- ControllerDaemon.exe
- CRCColorEngine.exe
- CreoServicePort.exe
- CXAdminD
- CXDiagLogD.exe
- CXProoferD
- CXReportEngineD.exe
- eEBAPI

9. When the exclusion lists look like the following example, close all open windows.

+ Add an exclusion

Creo
Folder

Kodak
Folder

MATLAB
Folder

Kodak
Folder

CAB
File type

creotif
File type

install
File type

JAR
File type

PDF
File type

TIF
File type

XML
File type

ZIP
File type

Bonjour Service
Process

ColorEngineDaemon.exe
Process

ControllerDaemon.exe
Process

CRCColorEngine.exe
Process

CreoServicePort.exe
Process

CXAdminD
Process

CXDiagLogD.exe
Process

CXProoferD
Process

CXReportEngineD.exe
Process

eEBAPI
Process

ProoferService.exe
Process