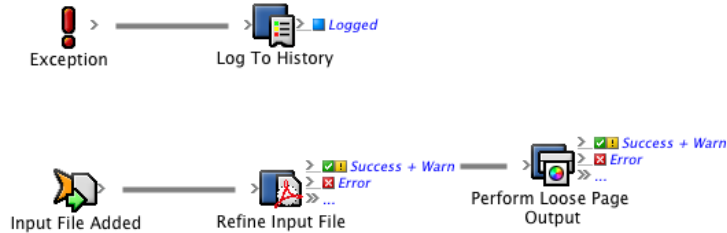
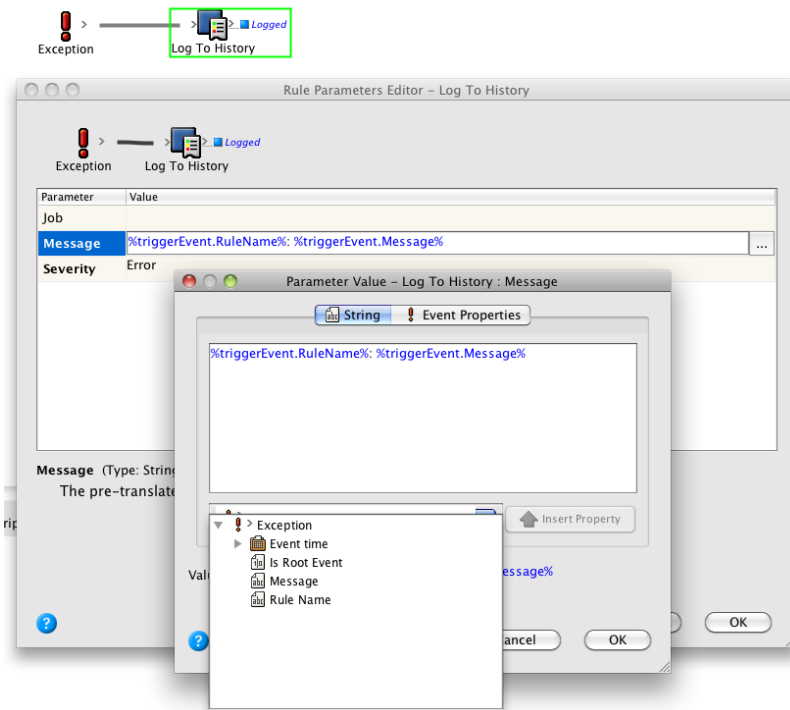


Create a rule set with a generic Exception handler

1. Create a new rule set as shown in the screenshot and use standard process templates for refining and proofing.



2. Configure the **Log To History** action to record an exception message.
3. Set the **Severity** parameter to **Error** and provide the action name (**Rule Name**) and exception message (**Message**) in the **Message** parameter.



4. Leave the **Job** parameter empty. This tells the **Log To History** action to log this message to the system history. This is a convenient place to log generic exception handler messages.