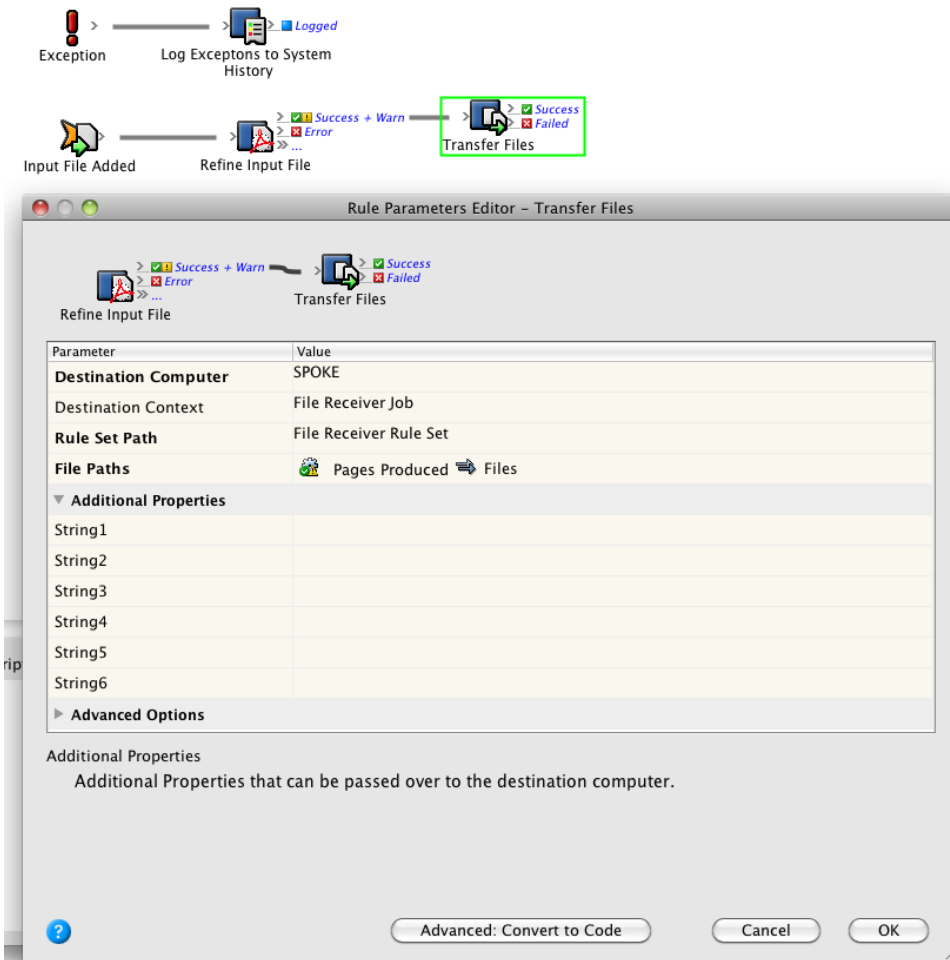


Create a rule set that uses Transfer Files

1. Create a new rule set, as shown in the screenshot. Remember to add an exception handler.



2. Configure the **Transfer Files** action to call a rule set in an environment and server suitable to your particular setup.
The **File Paths** parameter carries the **Pages Produced** value from the **Refine Input File** action.
Note: Note that you can also configure the **String1** through **6** parameters to pass to the receiving rule set for additional information that may be required by the receiving rule set.