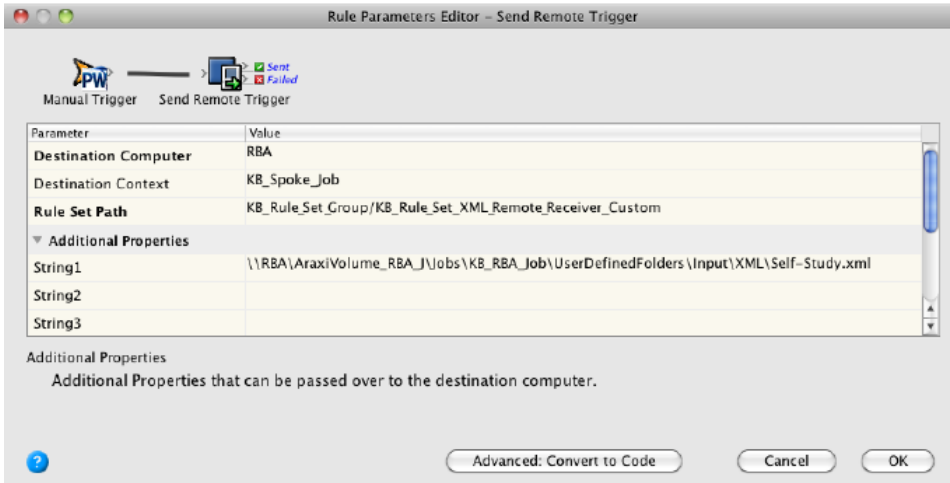


Modify a copy of the remote sender rule set to call the new remote receiver rule set

1. Create a copy of the rule set **<XX>_Rule_Set_XML_Remote_Sender** and name it **<X>_Rule_Set_XML_Remote_Sender_Custom**.
2. Modify this rule set so that it calls the rule set **<XX>_Rule_Set_XML_Remote_Receiver_Custom**.



3. Save and enable your new sender rule set **<XX>_Rule_Set_XML_Remote_Sender_Custom** in the hub job, named **<XX>_Hub_Job**.