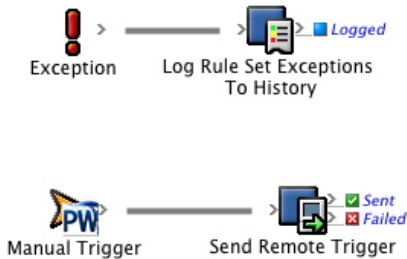
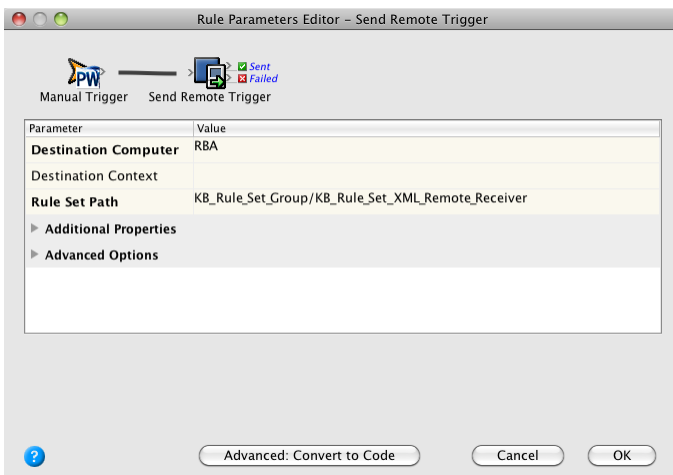


Create a remote sender event

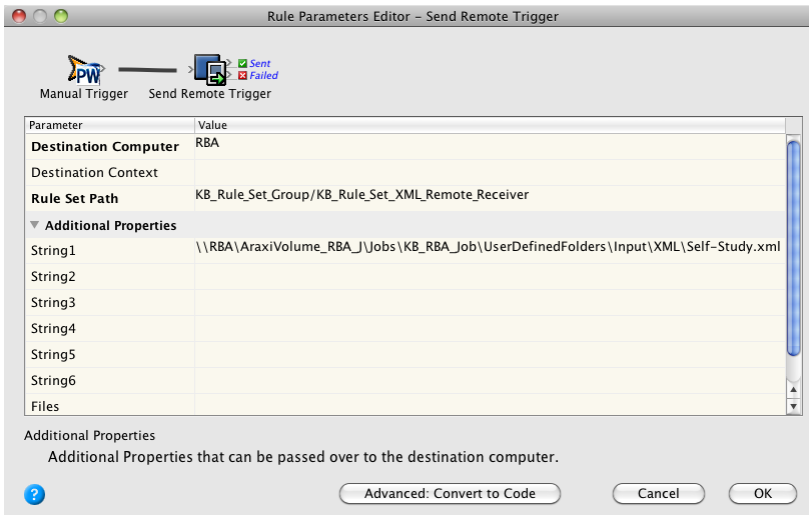
1. Create a new rule set called **<XX>_Rule_Set_XML_Remote_Sender** (where <XX> represents your initials) in **<XX>_Hub_Job**.
2. Add an exception handler rule, like you did in the previous rule set.
3. Add a **Manual Trigger** action.
4. Add a **Send Remote Trigger** action to the resulting event of the **Manual Trigger** action.



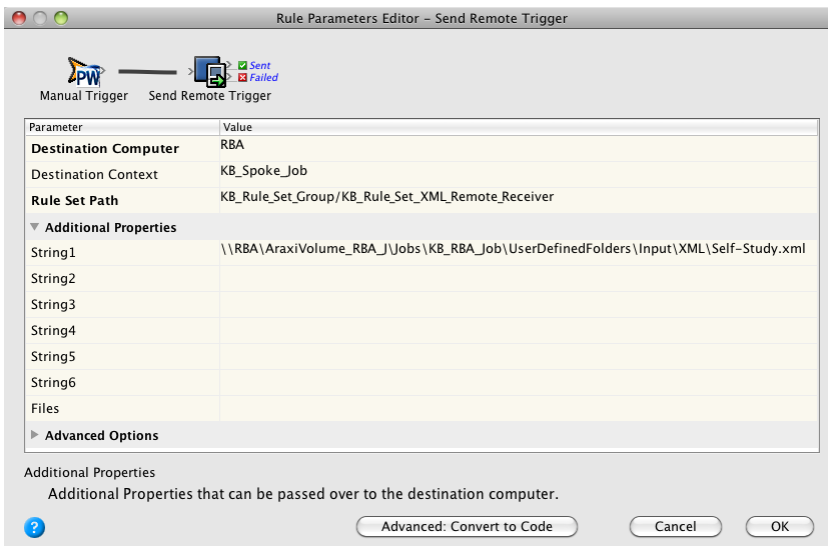
5. Configure the **Rule Set Path** parameter to your **<XX>_Rule_Set_Group > <XX>_Rule_Set_XML_Remote_Receiver**.
This path must be accurate for the trigger to work.



6. Configure the **String1** parameter by entering the full path to the XML (intent) file that you have saved on your system.



- Configure the **Destination Context** parameter by entering your spoke job name, **<XX>_Spoke_Job**.



- Enable **<XX>_Rule_Set_XML_Remote_Sender** in **<XX>_Hub_Job**.