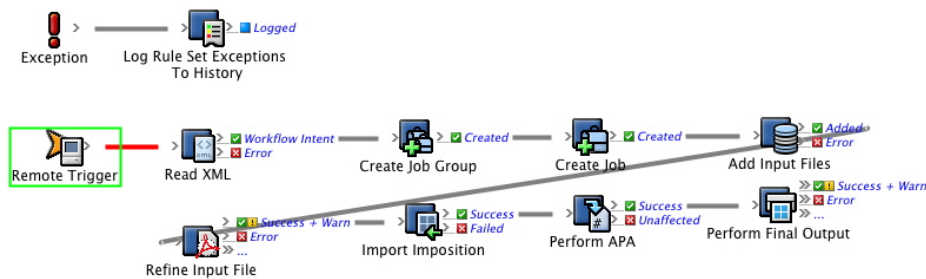
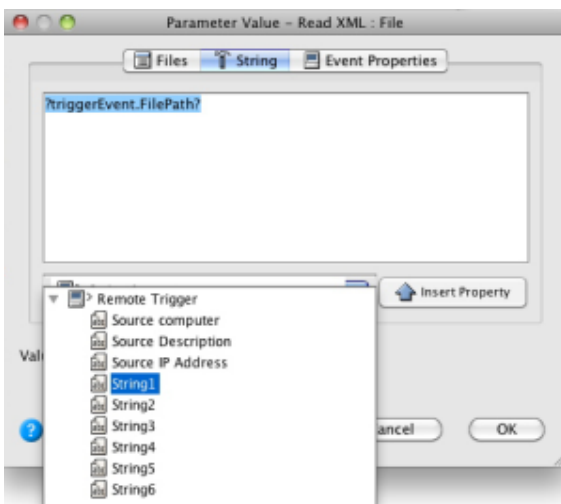


Add a remote trigger in the receiver rule set

1. Disable **<XX>_Rule_Set_XML_Workflow** and make a copy of it called **<XX>_Rule_Set_Remote_Receiver** (where **<XX>** represents your initials).
2. Create two new jobs in **XX_Rule_Set_Group**:
 - **<XX>_Hub_Job** - this is where **<XX>_Rule_Set_Remote_Sender** will be enabled
 - **<XX>_Spoke_Job** - this is where **<XX>_Rule_Set_Remote_Receiver** will be enabled
3. Enable **<XX>_Rule_Set_Remote_Receiver** in **<XX>_RBA_Job**.
4. Open a copy of the rule set for editing.
5. From the **Events** tab in Rule Set Builder, drag the **Remote Trigger** event over the top of the Job Hot Folder Drop event on the canvas.



6. Re-configure the **Read XML** action. Change the value of the **File** parameter to now be the **String1** event property from the **Remote Trigger** event. This tells RBA to get the XML file from the resulting event of the remote trigger (String1). We are going to populate **String1** in the sender rule set, in the next task.



7. Enable **<XX>_Rule_Set_Remote_Receiver** in **<XX>_Spoke_Job**.