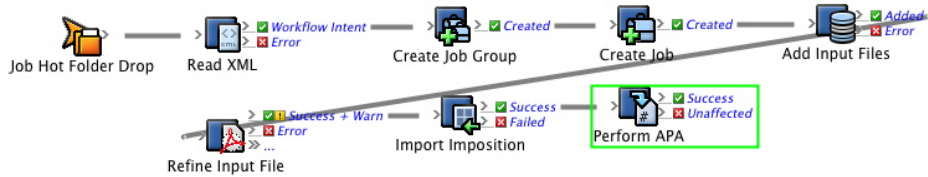
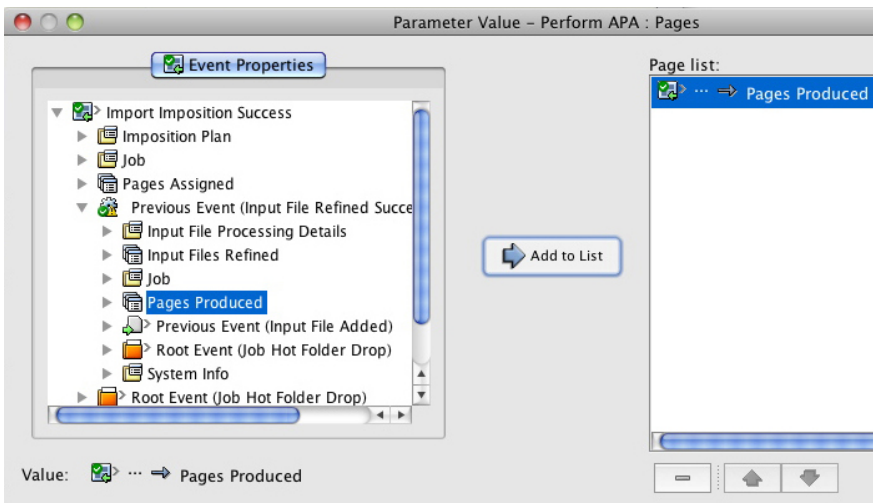


Get the rule set to perform APA

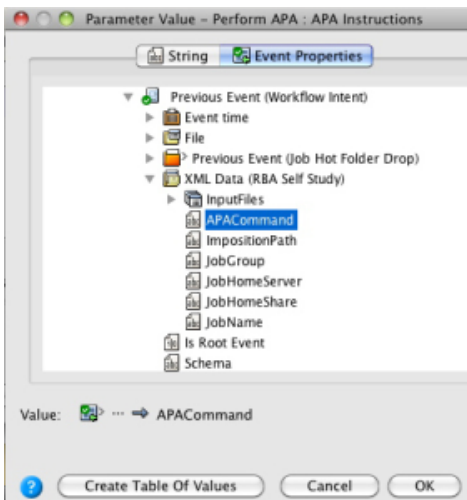
1. Open a copy of the enabled rule set.
2. Drag a **Perform APA** action to the **Success** event from the **Import Imposition** action.



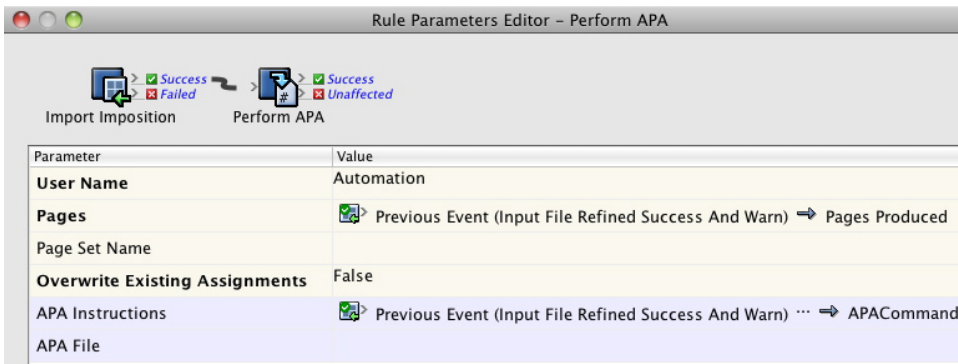
3. Configure the **Pages** parameter to **Import Imposition Success > Previous Event (Input File Refined Success and Warn) > Pages Produced**. This tells RBA to use the pages that were produced in the previous refine action.



4. Configure the **APA Instructions** parameter to **Previous Event (Workflow Intent) > Previous Event (Input File Refined Success and Warn) > Previous Event (Input File Added) > Previous Event (Job Created) > Previous Event (Job Group Created) > Previous Event (Workflow Intent) > XML Data (RBA Self-study) > APA Command**. This tells RBA to look at the XML file for instructions about how to assign the pages.



The Rule Parameters Editor should look like this:



5. Save and hot swap the rule set with the one that is currently enabled.
6. Run the enabled rule set in the Debugger.