

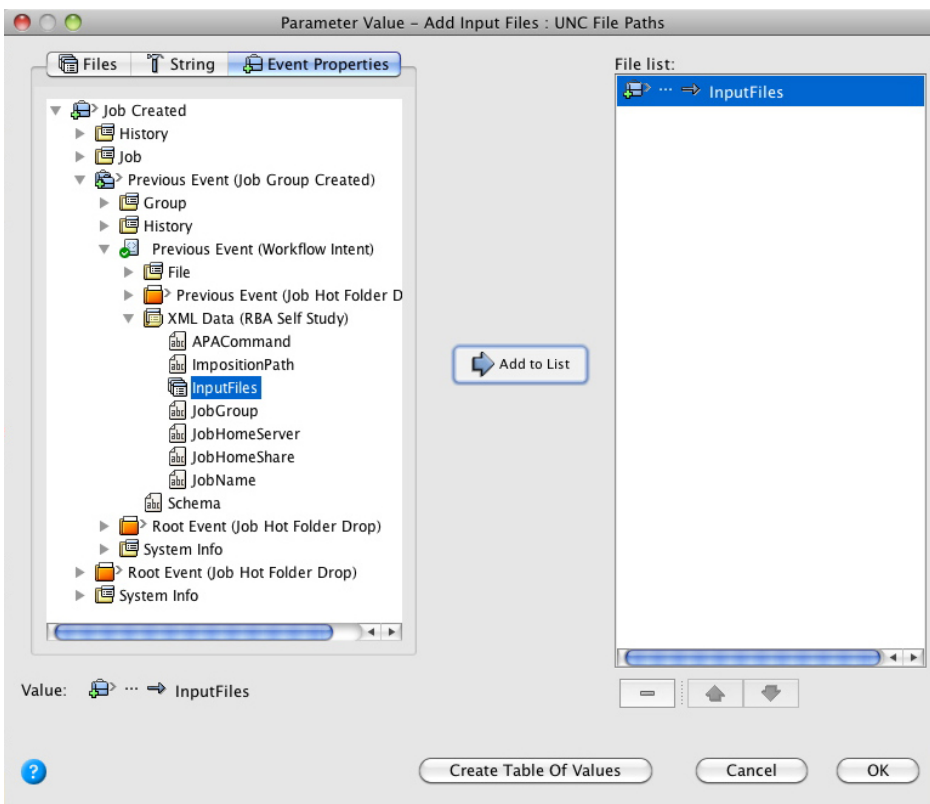
# Get the rule set to add the input files

1. Open a copy of the enabled rule set.
2. Drag an **Add Input Files** action to the **Created** success event from the **Create Job** action.



3. Configure the **UNC File Paths** parameter to **Previous Event (Job Created) > Previous Event (Job Group Created) > Previous Event (Workflow Intent) > XML Data (RBA Self-study) > Input Files**.

This tells RBA to look at the XML file to see which input files to use.



The Rule Parameters Editor should look like this:

