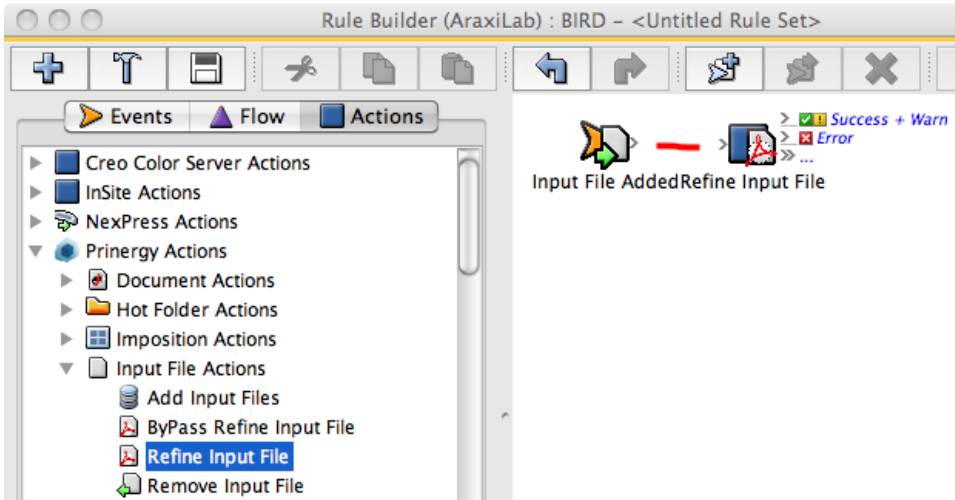


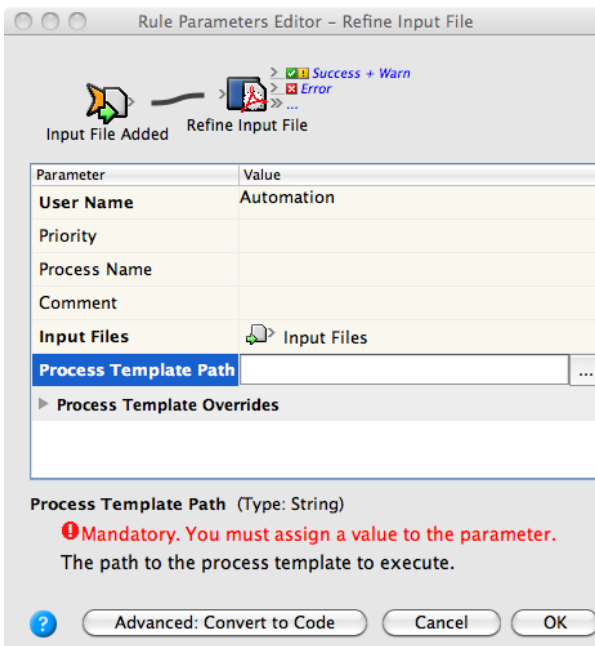
# Select an action

In this task, you will select an action to use after the **Input File Added** event. An action is any work that can be performed in the Prinergy system. An action must be triggered by an event.

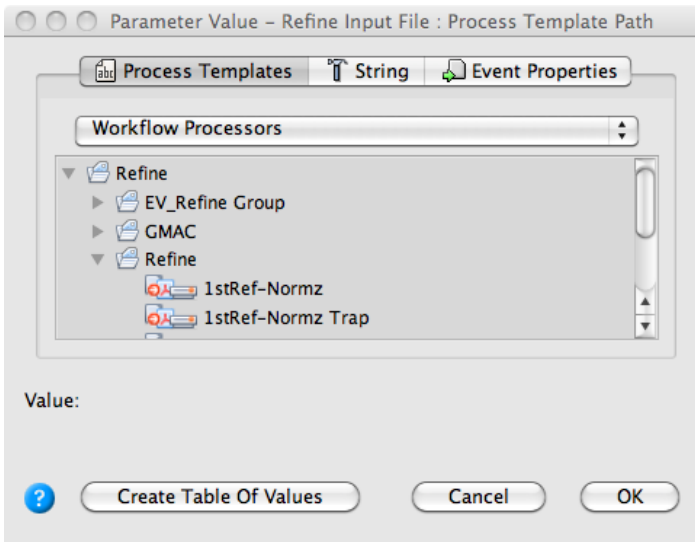
1. On the **Actions** tab, locate **Refine Input File: Prinergy Actions > Input File Actions > Refine Input File**.
2. Drag **Refine Input File** to the action icon (center of the green box).



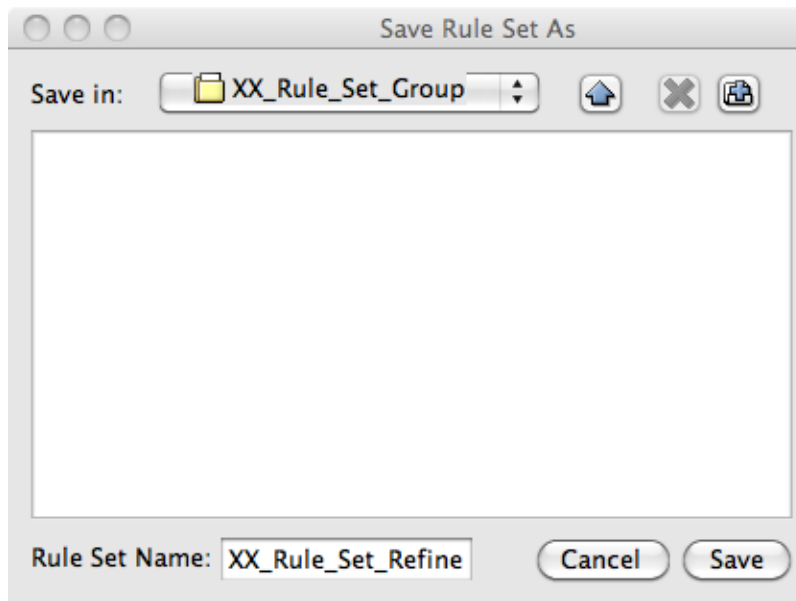
3. Double-click the red line separating the event and the action.
4. In Rule Parameters Editor, in the **Process Template Path** box, click the red text (**Enter a Value**).
5. Click the **Edit Value** icon (...) to access the Parameter Value dialog box.



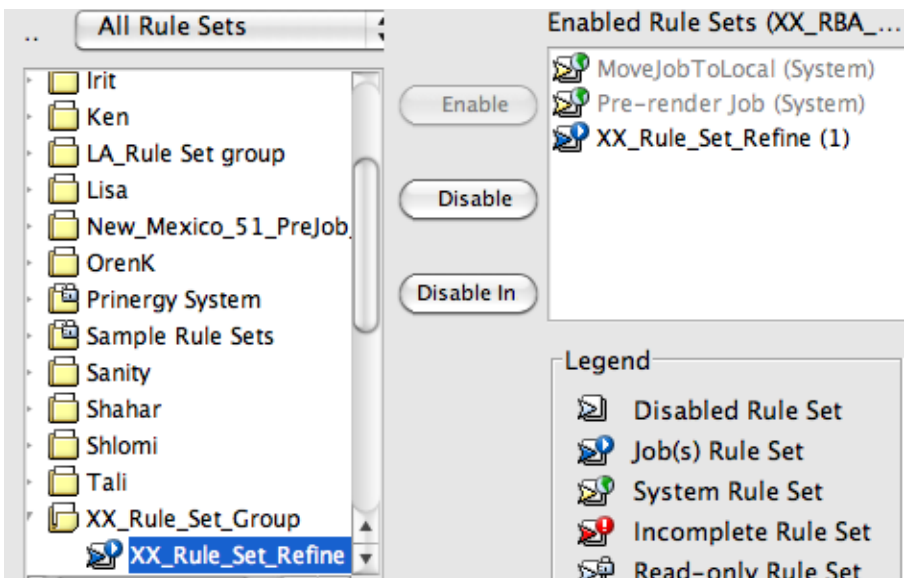
6. In the Parameter Value dialog box, choose the process template: **Refine > Refine > 1stRef-Normz**.



7. Click **OK**.
8. Click **OK** in Rule Parameters Editor.
9. From the **File** menu in Rule Builder, choose **Save**.
10. In the Save Rule Set As dialog box, perform the following tasks:
  - a. In the **Save in** box, select **<XX>\_Rule\_Set\_Group** (where <XX> are your initials).
  - b. In the **Rule Set Name** box, name your rule set <XX>\_Rule\_Set\_Refine (where <XX> are your initials). Click **Save**.



11. Close Rule Builder.
12. In Rule Set Manager, select your **<XX>\_Rule\_Set\_Refine** rule, and click the **Enable** button. Your rule is now enabled for the job and is waiting to be activated. After an input file is added to the job, the rule will start.



13. Close Rule Set Manager.