

Pre-Warping

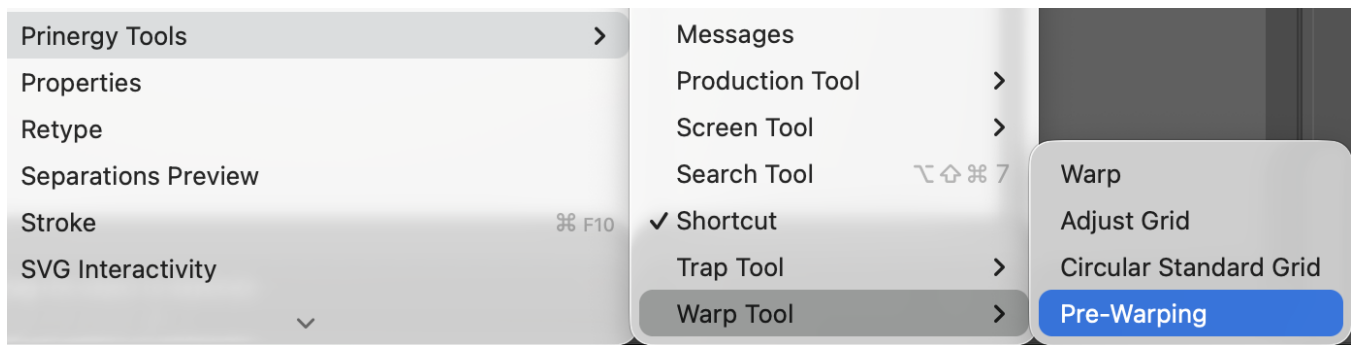
Concepts of Pre-Warping

Pre-Warping

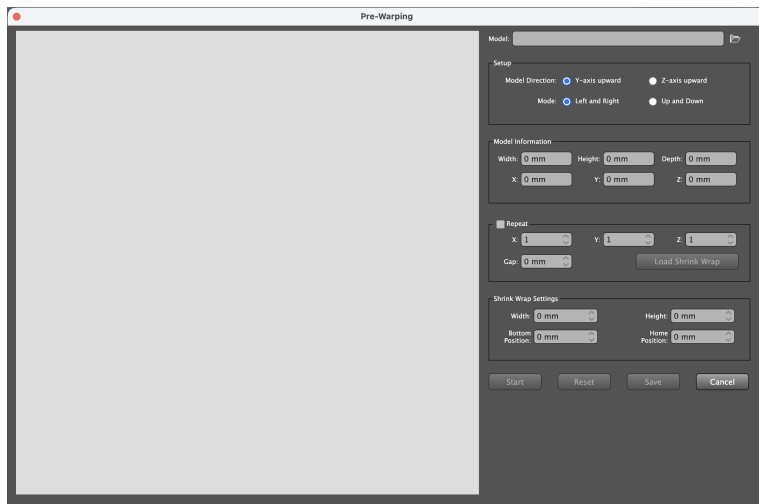
During the packaging design stage (for example, plastic bottles, metal cans, or paper cups), Pre-Warping generates a 3D model along with corresponding mesh deformation data based on the container's shape and defined settings. This provides the foundation for accurate distortion of artwork.

Pre-Warping Workflow

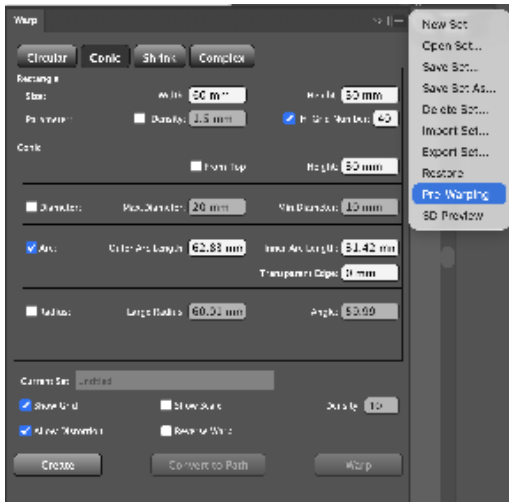
- Launch Adobe Illustrator and open the document.
- Click "Windows" menu "Prinerly Tools" "Warp Tool" "Pre-Warping".



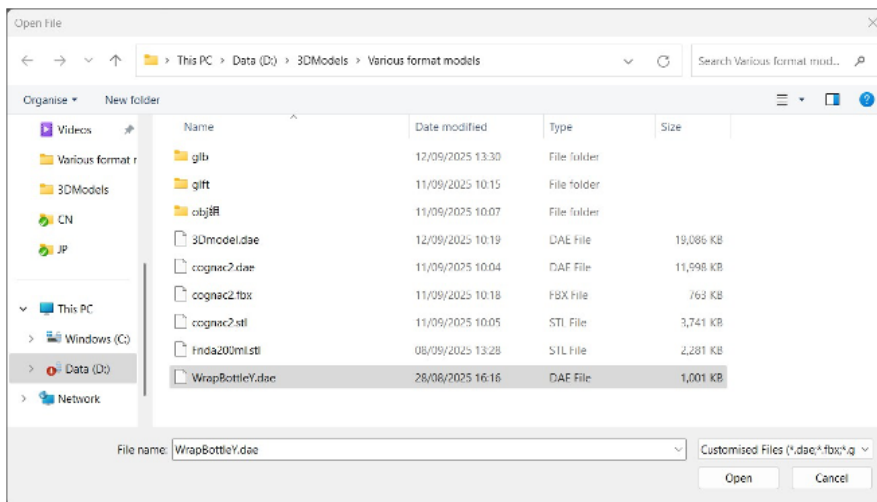
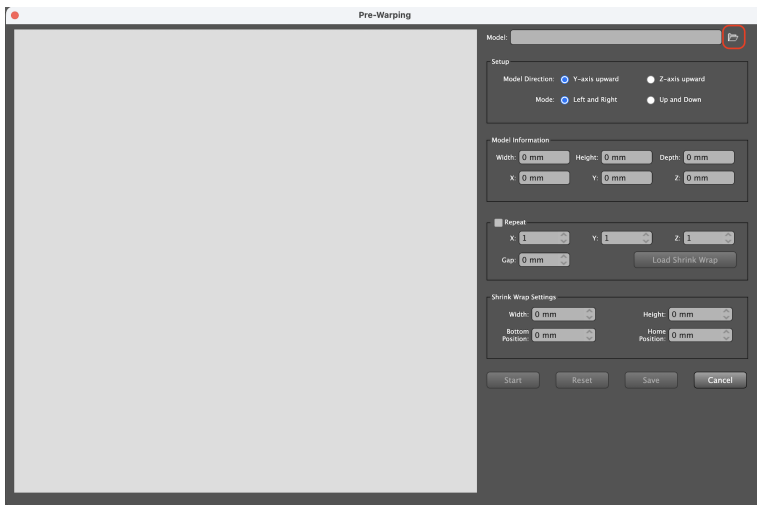
- A pre-warping dialog box window pops up



- The Pre-Warping window can also be opened via the menu bar to the right of the Warp Tool.



- Click the Import Model button to select the model file to be imported.



- Set up

Setup

Model Direction: Y-axis upward Z-axis upward

Mode: Left and Right Up and Down

- **Model Direction:** The display orientation of the model can be set to Y-up and Z-up.
- **Shrinkage Mode:** The wrapping method of the heat shrinkable film can be set, which can be set to left-right or up-down.

- Model Information

Model Information

Width: 0 mm Height: 0 mm Depth: 0 mm

X: 0 mm Y: 0 mm Z: 0 mm

- Display the basic information of the current model, which is greyed out and cannot be modified.

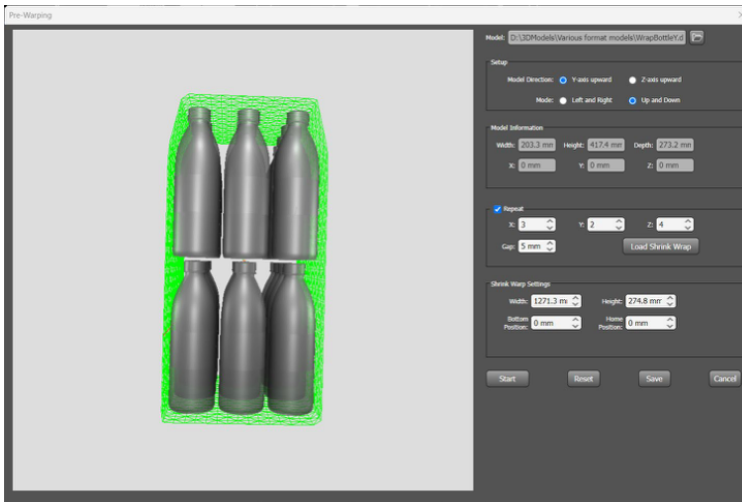
- Repeat

Repeat

X: 1 Y: 1 Z: 1

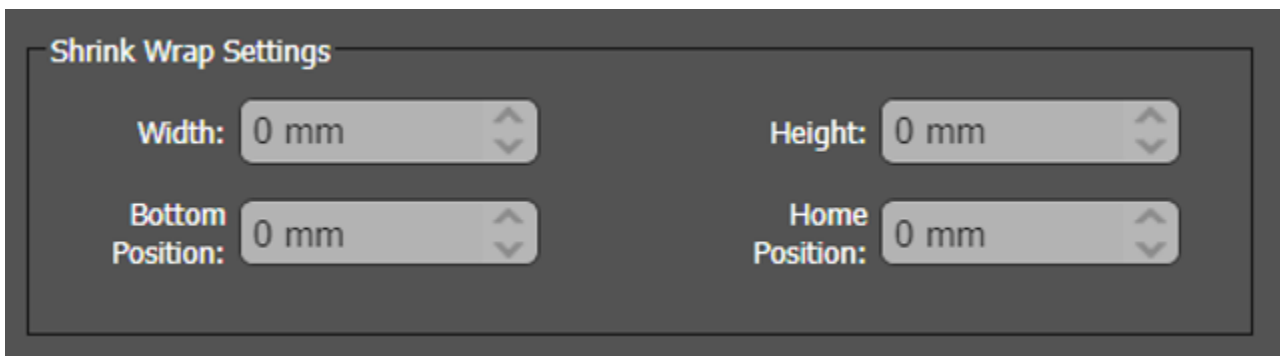
Gap: 0 mm

Load Shrink Wrap



- Check to enable the duplicate model. The heat-shrinkable film for individual models will be hidden.
- XYZYou can set the number of models in the corresponding direction either via buttons or by directly entering the numbers.
- Gap: You can set up the distance between each model.
- Load Shrink Wrap: After clicking the button, load heat shrink film for multiple models based on the settings.

Shrink Wrap Settings



- **Width:** Displays the width of the current heat shrink
- **Height:** Displays the height of the current heat shrink
- **Bottom Position: Shrinking Direction (Non-Rotating Model)**

When the model is not rotating, the movement direction of the shrinkable film depends on the selected shrinking mode:

- **Left-Right Shrinking Mode**
The shrinkable film moves vertically (up and down), starting from the bottom of the model.
- **Up-Down Shrinking Mode**
The shrinkable film moves horizontally (left and right), starting from the front side of the model.

Note: This parameter supports negative values, which can be used to reverse the movement direction if needed.

- **Home position:** The starting position of the heat shrink

Start Button

Click **Start** to begin the heat-shrink process. Once activated, the button label changes to **Stop**.

- The button is **disabled (greyed out)** when the dialog box is open.
- The button becomes **enabled** when the heat-shrink film is visible.

Reset Button

Click **Reset** to clear all values in the interface and restore them to their default settings.

- The button is **disabled** after clicking **Start**.
- The button becomes **enabled** again after clicking **Stop**.

Save Button

After the heat-shrink process is complete, click **Save** to store the heat-shrunked model.

- Once saved successfully, the dialog box will close automatically.
- The grid information will be written to the Illustrator file.
- A new locked layer named **Shrink Area** will be created.
- The **Save** button is **disabled** during the process (after clicking **Start**) and becomes **enabled** again after clicking **Stop**.

Cancel Button

Click **Cancel** to close the pre-warping dialog box without saving changes.