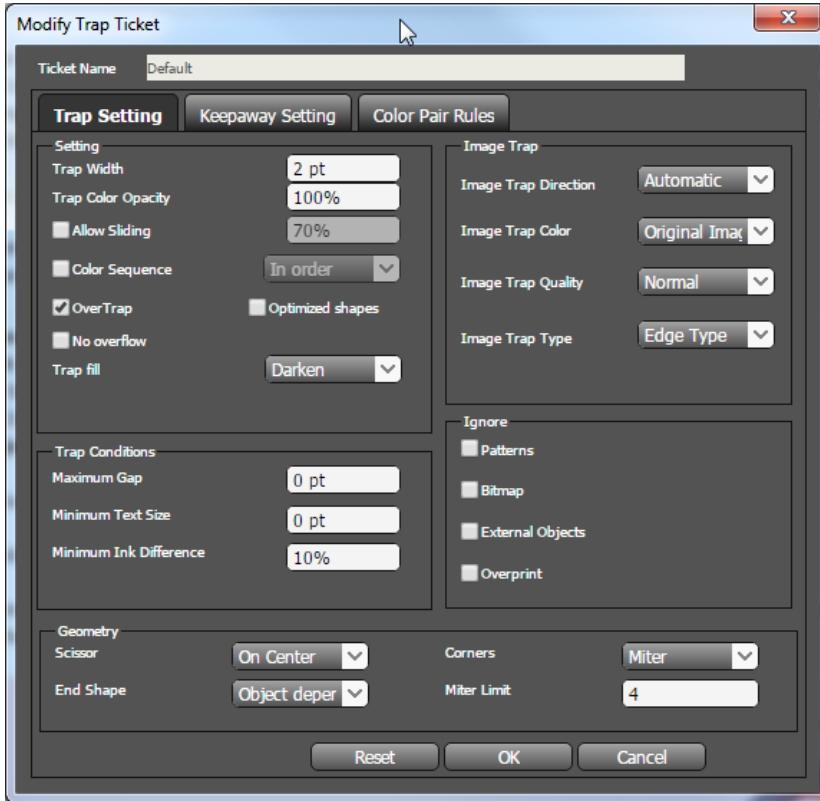


# The trap ticket dialog box

Use the trap ticket dialog box to set the main trapping parameters, including trap and keepaway settings, and to set color pair trap rules. The default name of the trap ticket file is `untitled`. You can use "Reset" button to restore the settings when the trap ticket is still open.



- Trap Setting tab
- Keepaway Setting tab
- Color Pair Rules tab