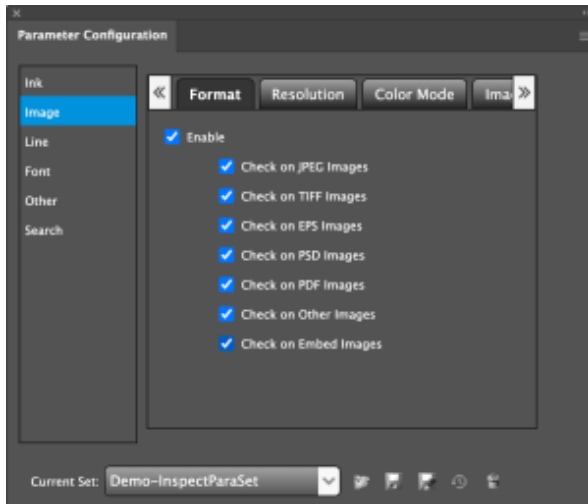


Managing parameter settings



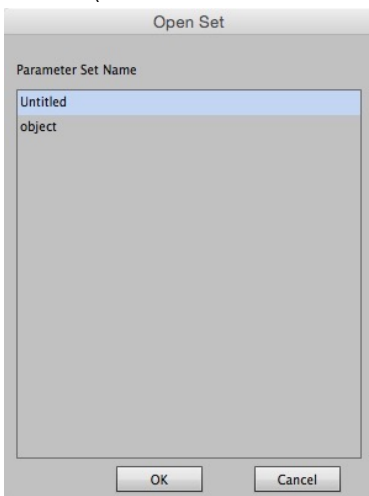
To create a new parameter set

In the Parameter Configuration interface, click the Save icon to save the Current Set as a **New Set**.

To open an existing parameter set

1. In the Parameter Configuration interface, click the Open icon on the panel to **Open Set**. The Open Set window appears.
2. Select the parameter set file from the list shown.
3. Click **OK**.

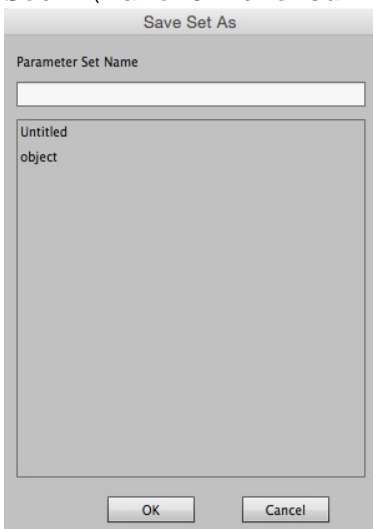
In the Parameter Configuration window, the current set name will change to `Current Set: (name of the selected file)`



To save a parameter set

Perform one of these actions

- In the Parameter Configuration interface, from the drop-down menu on the panel, select **Save Set**.
The update settings will be saved into the current parameter set.
- In the Parameter Configuration interface, from the drop-down menu on the panel, select **Save Set As**.
The file saving dialog box will be displayed. Enter a name into the text field and click **OK**.
In the Parameter Configuration window, the current set name will change to `Current Set: (name of the current file)`

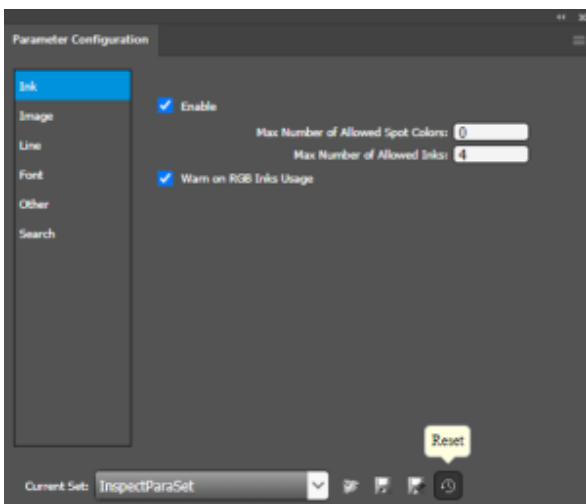


To export an old version parameter set

In the Parameter Configuration interface, from the side menu, select **Export old version parameter set**.

To restore the modified current parameter set to the last saved set containing the original properties and parameters

In the Parameter Configuration interface, click the Reset icon.



To delete the current parameter set

