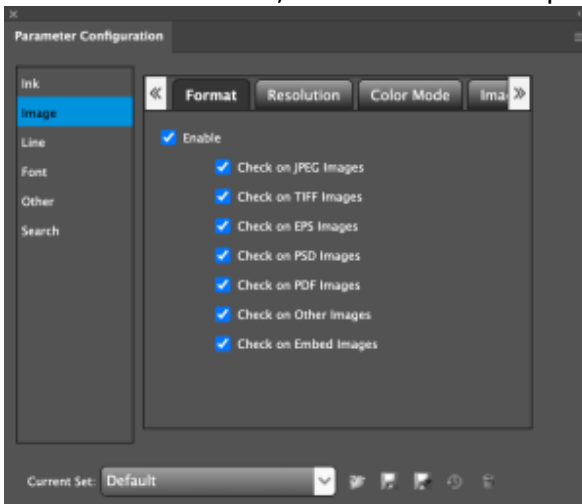


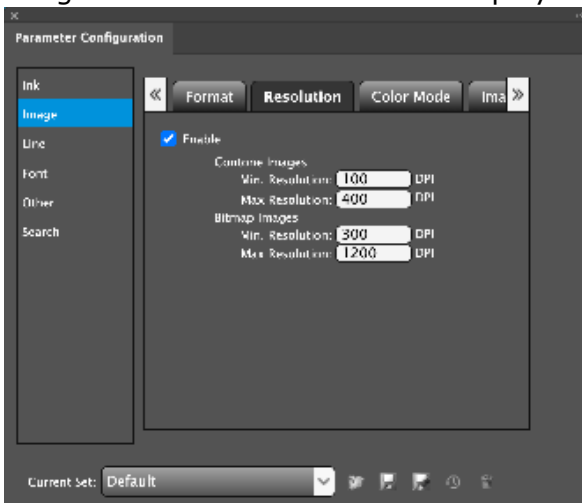
# Setting Image inspection parameters

1. In the Parameter Configuration interface, select **Image**.
2. To set image parameters and confirm that you want the file inspected for those parameters, select the **Enable** check box on the tabs with the image parameters you want to check. If **Enable** is not selected, the image parameters on that tab will not be inspected.
3. On the **Format** tab, select the format parameters that you want to check.



4. On the **Resolution** tab, select the image parameters you want to check. When the **Enable** check box is selected, the image resolution of continuous tone and bitmap images can be set. Images can then be inspected to determine which are out of the image resolution setting range.

**Note:** When rotating the image, the resolution will be in accordance with the original one before rotation. Prinergy Tools image resolution will check the actual resolution of the image instead of the resolution displayed by Adobe Illustrator.

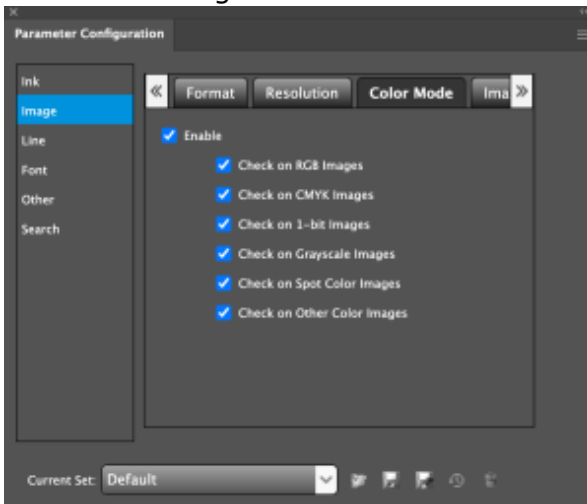


<b>Contone Images Min. Resolution</b>	Inspect contone images to determine which are lower than the minimum resolution.
<b>Contone Images Max. Resolution</b>	Inspect contone images to determine which are greater than the maximum resolution.

<b>Bitmap Images Min. Resolution</b>	Inspect bitmap images to determine which are lower than the minimum resolution.
<b>Bitmap Images Max. Resolution</b>	Inspect bitmap images to determine which are greater than the maximum resolution.

5. On the **Color Mode** tab, select the image color mode parameters you want to check. **Other Color Images** includes Adobe Illustrator format, Index model, L.A.B. model, dual-channel model images, and so on.

**Note:** The image formats are based on the display on the Artboard in Adobe Illustrator.



6. On the **Image Info** tab, select the **Enable** check box to inspect all images in the file. Select **Check Image Information** to show each image's information in the information window including name, format, software name, color mode, set time, modification time, resolution, Halftone (Yes/No), Transfer function (Yes/No), PSColorManagement (Yes/No), ICC Profile (Yes/No), and file path.

For example,

file name:

PSD

PhotoShop

bitmap

set time: 2008/8/27 12:00

modification time: 2008/8/28 13:00

350dpi

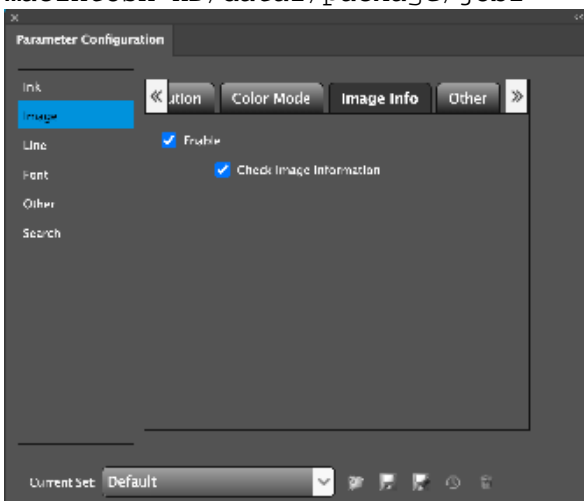
HalfTone: Yes

Transfer function: No

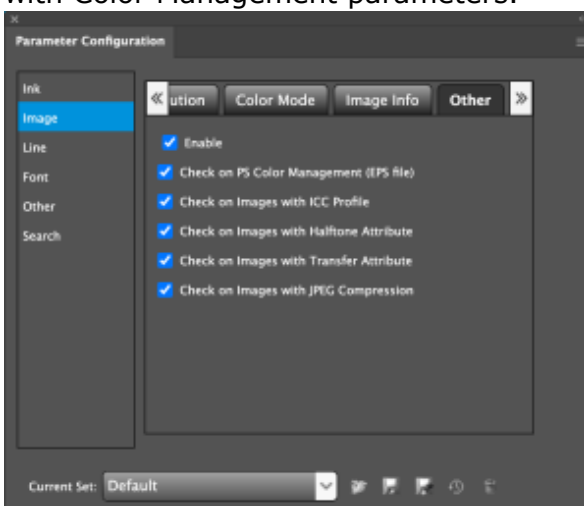
PSColorMangement: No

ICC Profile: No

macintosh HD/data1/package/job1



7. On the **Other** tab, select the Enable check box to set parameters for embedded images with Color Management parameters.



<b>Check on PS Color Management (EPS file)</b>	Whether or not to check for embedded images with PostScript Color Management: Only check EPS in Photoshop.
<b>Check on Images with ICC Profile</b>	Whether or not to check for Images with ICC Profiles: PostScript Color Management: Only check EPS.
<b>Check on Images with Halftone Attribute</b>	Whether or not to check for Images with Halftone screen: Only check EPS in Photoshop.
<b>Check on Images with Transfer Attribute</b>	Whether or not to check for Images with transfer function: Only check EPS in Photoshop.
<b>Check on Images with JPEG Compression</b>	Whether or not to check for Images with JPEG: Only check EPS in Photoshop.