

# Use Layered PDF Versioning with a layered input file

You are supplied a layered PDF file from your customer. You want to create four separate versions based on the supplied PDF file. As part of this job, you need to combine nine separate layers into five layers, and then define a version plan that uses the five layers to create the four separate versions.

**Note:** If you didn't complete Scenario 1, complete Tasks 1 and 2 (of Scenario 1), before completing the following. Tasks 1 and 2 (of Scenario 1) contain preparatory steps required for both scenarios in this activity.

- [Create an LPV job](#)
- [Copy an input file and imposition plan to the job folder](#)
- [Add and refine the input file](#)
- [Define the version plan layer structure](#)
- [Link refined PDF page to a versioned page](#)
- [Generate a versioned page](#)
- [Impose the versioned page](#)
- [Proof the versioned page using Prinergy VPS](#)

## Create an LPV job

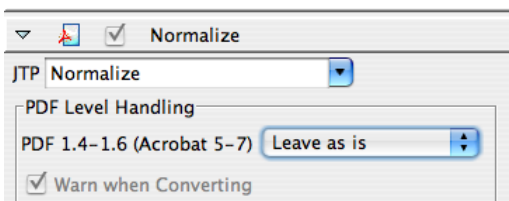
1. If it is not already open, start Prinergy Workshop.
2. In Job Finder, right-click your main group, and choose **New Job**.
3. Type the job name `XX_LPV_B` (where `<XX>` represents your initials).
4. In the **Options** section of the dialog box, select **Job Attributes**.
5. In the Set Job Attributes dialog box, locate the **Regional Versioning** section.
6. Select the **Layered PDF Versioning (LPV) Job** option. Click **OK**.
7. In the Create New Job dialog box, click **Create**.
8. In Job Manager, select the **Pages** pane.
9. From the **View** menu, choose **Visible columns**.
10. Verify that the following columns are selected:
  - Versioned Page Status**
  - Page Colors**
11. Minimize the Job Manager window.

## Copy an input file and imposition plan to the job folder

1. From your workstation, locate: Prinergy Activity Practice Files / Act\_31\_LPV
2. Copy the Job B Input File and Job B Imposition folders.
3. Restore Job Manager.
4. Right-click the **XX\_LPV\_B** job folder icon in the lower left corner of Job Manager. Select **Open Job Folder in File Browser**.
5. In the `XX_LPV_B` folder, open `UserDefinedFolders`.
6. Paste the Job B Input File and Job B Imposition folders into `UserDefinedFolders`.
7. Close the job folder.

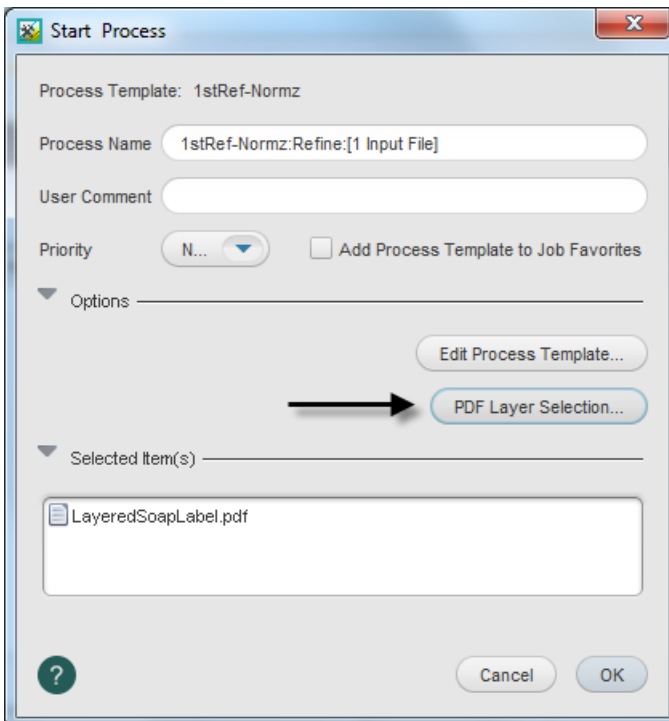
## Add and refine the input file

1. Right-click the **Input Files** pane and choose **Add Input Files**.
2. In the Add Input Files dialog box, click the **Job Folder** button and locate: UserDefinedFolders/Job B Input File/LayeredSoapLabel.pdf.
3. Click the **Add Selected** button to add the file to the **Files to Add** list.
4. In the **Options** section of the Add Input Files dialog box, select the **Process Selected Files Using Process Template** check box. and use the process template: **Refine > Refine > 1stRef-Normz**.
5. In the Add Input Files dialog box, click **OK**.
6. In the Start Process dialog box, click the **Edit Process Template** button.
7. Open the **Normalize** section. In the **PDF Level Handling** list, confirm that the **PDF Level Handling** is set to **Leave as is**, and click **OK**.



The transparent attributes have now been successfully maintained.

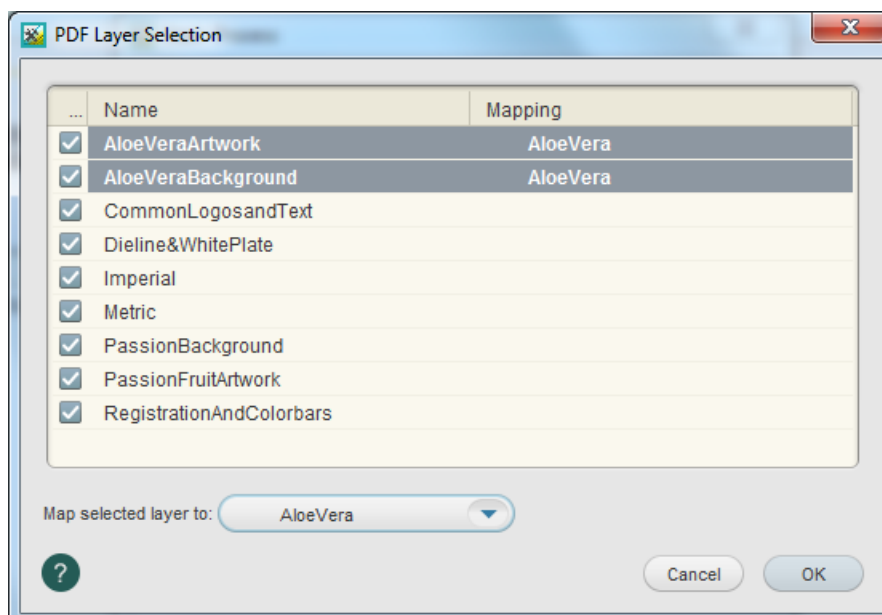
8. In the Start Process dialog box, click the **PDF Layer Selection** button.



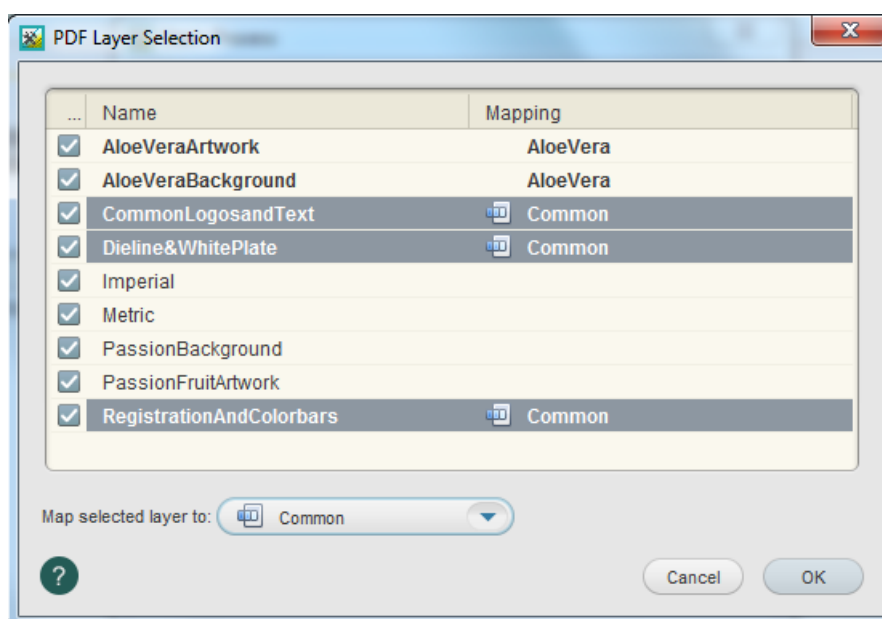
**Note:** The following three steps illustrate how to map a layered PDF file that consists of nine layers into a more manageable PDF file that contains five layers.

9. The following steps map two separate layers into one layer that uses a customized name:
  - a. Holding the Shift key, select **AloeVeraArtwork** and **AloeVeraBackground**
  - b. From the **Map selected layer to** list, select **Other**.

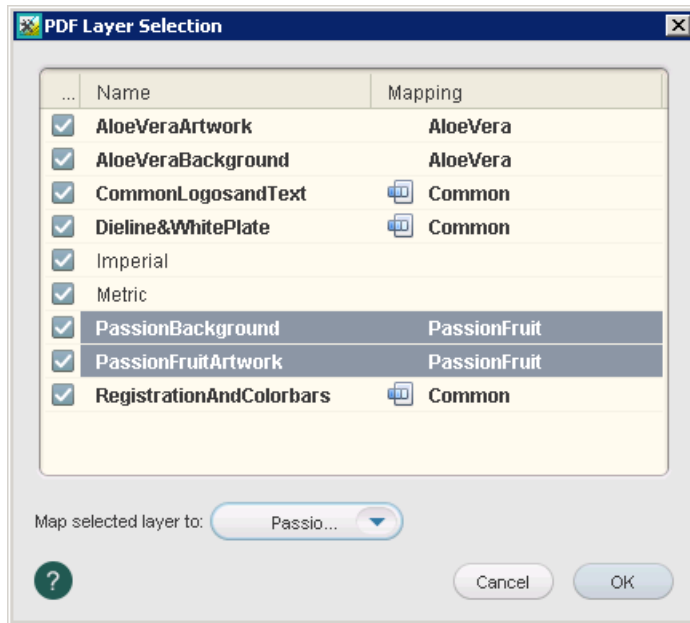
- c. In the Input dialog box, type the name AloeVera and click **OK**.



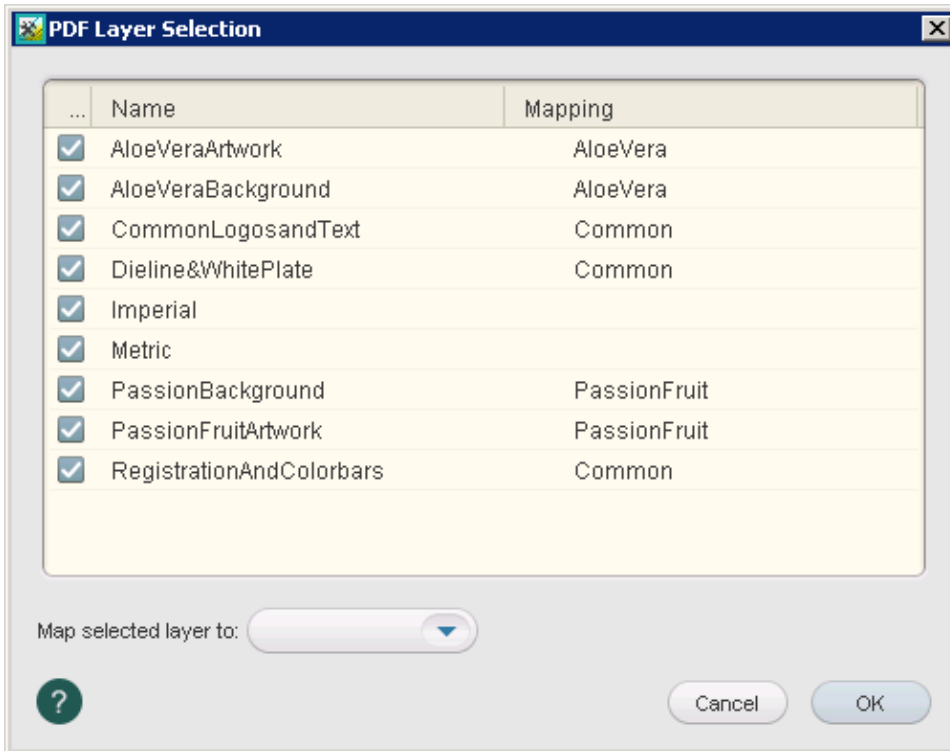
10. The following steps map three separate layers into one layer that is identified as the Common layer:
- Holding the Ctrl key, select **CommonLogosandText**, **Dieline&WhitePlate**, and **RegistrationAndColorbars**.
  - From the **Map selected layer to** list, select **Common**.



11. The following steps map two separate layers into one layer that uses a customized name:
- Holding the Shift key, select **PassionBackground** and **PassionFruitArtwork**.
  - From the **Map selected layer to** list, select **Other**.
  - In the Input dialog box, type the name `PassionFruit` and click **OK**.



12. Click **OK** in the PDF Layer Selection dialog box.
13. In the Start Process dialog box, Click **OK**.  
**Important:** The mapping of the input file's layers to the version plan's layers is retained so that each new input file that is added to the job can be automatically mapped to the job layers using the latest mapping data. A PDF layer mapping profile is saved in the job's folder and can be applied to other jobs.
14. From the **Input Files** pane, open the **LayeredSoapLabel.pdf** in Adobe Acrobat.  
**Note:** In Adobe Acrobat, select the **Layers** tab. View the layers built as part of the input file. Make note that the customer supplied PDF file contains nine layers.
15. From the **Pages** pane, open the refined **LayeredSoapLabel.p1.pdf** in Adobe Acrobat.  
**Note:** In Adobe Acrobat, select the **Layers** tab. Make note that the refined PDF file now contains five layers. This is a result of mapping the selected layers prior to the refine process.
16. Right-click the **Input Files** pane and choose **Add Input Files**.
17. In the Add Input Files dialog box, click the **Job Folder** button and locate:  
UserDefinedFolders/Job B Input File/LayeredSoapLabel\_MAP.pdf.
18. Click the **Add Selected** button to add the file to the **Files to Add** list.
19. In the **Options** section of the Add Input Files dialog box, select the **Process Selected Files Using Process Template** check box. and use the process template: **Refine > Refine > 1stRef-Normz**.
20. In the Start Process dialog box, click the **PDF Layer Selection** button.  
Note that the layers in the new file are already mapped. The previous layer mapping has been retained.



21. Click **OK** in the PDF Layer Selection dialog box.

22. In the Start Process dialog box, Click **OK**.

**Important:** The new input file that you added has been automatically mapped to the job layers using the latest mapping data. Note that the refined PDF file now contains five layers. This is a result of retaining the layer mapping information.

## Define the version plan layer structure

In this task, you will define how the five layers of this versioned job (Common, AloeVera, PassionFruit, Imperial, and Metric), work together to create four separate versions.

1. Select the **Version Plan** view.

Make note of the automatic creation of layers and the identification of colors to extract for each layer. When you use layered input files, layers of the job are automatically created. This is different compared to using the Version Plan Quick Builder with non-layered input files.

2. From the **Versioning** menu, choose **Add Change Layer**.

3. Repeat the same step as above to create a second change layer.

4. From the **Versioning** menu, choose **Add Version**.

5. Repeat the same steps as above to create three more versions.

6. Click each version name and rename as follows:

- New Version 1 = PassionFruitMetric
- New Version 2 = PassionFruitImperial
- New Version 3 = AloeVeraMetric

- New Version 4 = AloeVeraImperial

Pages	Version Plan	Versioned Pages	
Version	Base Layer	Change Layer 1	Change Layer 2
AloeVeraImperial	Common		
AloeVeraMetric	Common		
PassionFruitImperial	Common		
PassionFruitMetric	Common		

7. Using the list selections in the three layer columns, make the following selections for each version:

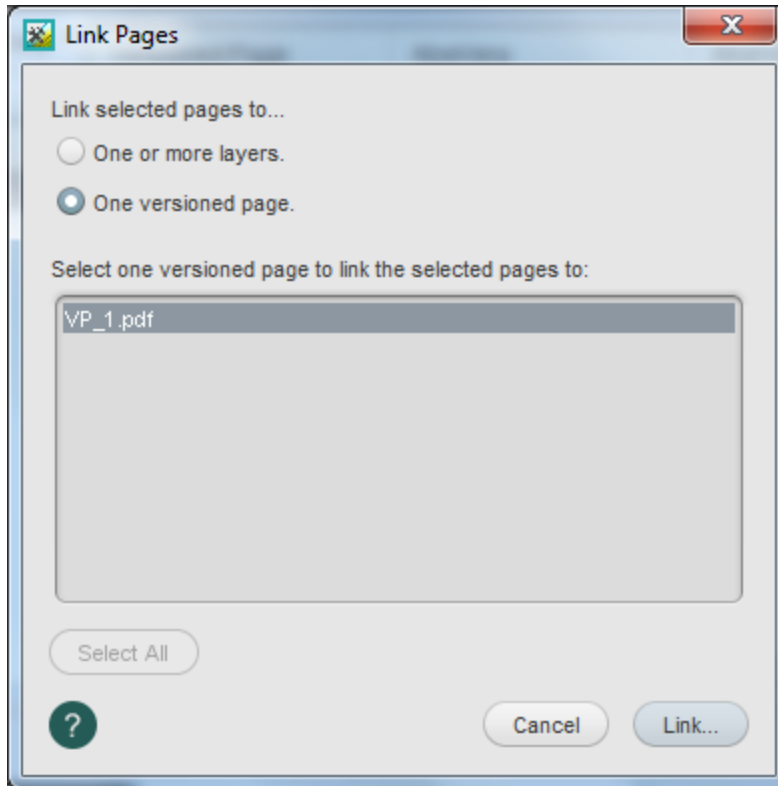
Version	Base layer	Change layer 1	Change layer 2
PassionFruitMetric	Common	PassionFruit	Metric
PassionFruitImperial	Common	PassionFruit	Imperial
AloeVeraMetric	Common	AloeVera	Metric
AloeVeraImperial	Common	AloeVera	Imperial

Pages	Version Plan	Versioned Pages	
Version	Base Layer	Change Layer 1	Change Layer 2
AloeVeraImperial	Common	AloeVera	Imperial
AloeVeraMetric	Common	AloeVera	Metric
PassionFruitImperial	Common	PassionFruit	Imperial
PassionFruitMetric	Common	PassionFruit	Metric

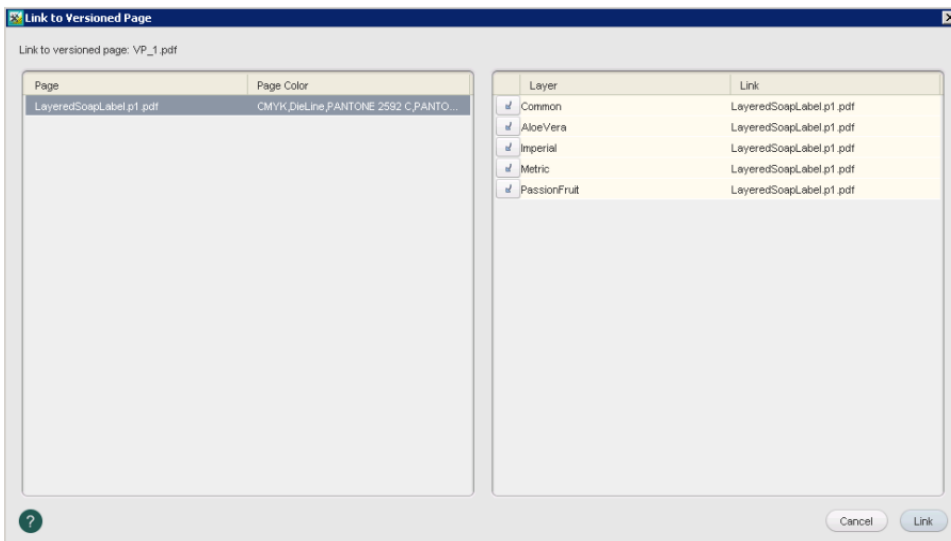
## Link refined PDF page to a versioned page

In this task, you will link the layered PDF page to five separate layers. Based on the version plan, each layer only uses certain parts of the layered PDF page. For example, the AloeVeraImperial version uses only the common base layer, the AloeVera layer, and the Imperial layer associated to the layered PDF page.

1. Select the **Versioned Pages** view.
2. From the **Versioning** menu, choose **Add Versioned Pages**.
3. In the Add Versioned Pages dialog box, add a page Range of **1**. Click **OK**.
4. Right-click the LayeredSoapLabel.p1.pdf in the **Page** column, and choose **Link**.
5. In the Link Pages dialog box:
  - Select **One versioned page**
  - Select VP\_1.pdf
  - Click the **Link** button



6. In the Link to Versioned Page dialog box, verify that all layers have been linked to LayeredSoapLabel.p1.pdf.



7. Click **Link**.

## Generate a versioned page

In this task, the generate process combines all layered information to generate a finalized versioned page consisting of the four defined versions.

1. In the **Versioned Pages** view, select the versioned page `VP_1.pdf`.

2. From the **Process** menu, choose the process template: **Generate > Generate > Generate** .
3. In the Start Process dialog box, click the **Edit Process Template** button.
4. Open the **Generate Versioned Pages** pane.
5. In the **Version Layer Options** section, clear the **Force Overprint** option.  
**Note:** The **Force Overprint** option is used when an object on a change layer creates a knockout in the base layer, and where the knockout is not the same on each version. This check box sets all change objects to overprint, where change objects are objects on pages that are linked to layers other than the base layer. For more information, see the *Layered PDF Versioning for Prinergy User Guide*.
6. Click **OK**.
7. In the Start Process dialog box, Click **OK**.

## Impose the versioned page

In this task, you will impose the versioned page to a four-up step and repeat imposition plan.

1. Select the **Pages** view.
2. From the **File** menu, choose **Import Imposition**.
3. In the Import Imposition dialog box, click the **Job Folder** button and locate:  
UserDefinedFolders / Job B Imposition / 4UpStep&Repeat.jt.
4. Click **Import**.
5. In the Start Process dialog box, click **OK**.
6. In the **Pages** pane, right-click `VP_1.pdf` and choose **Assign Page to Position**.
7. In the Assign Page to Page Set Position dialog box, select the **Range** option.
8. In the Range window enter: **(1-4)**. Click **OK**.  
To assign a single page to multiple page positions, enclose the list of page positions in parentheses.

## Proof the versioned page using Prinergy VPS

1. Select the **Separations** view.
2. View the separations that make up **Signature 1—A Front 1**.
3. Right-click **Signature 1 (18 Separations)** and choose the process template: **Imposition Output > Virtual Proof > Virtual Proof.Imposed.600**.
4. In the Start Process dialog box, ensure the **Output All Versions** option is selected, and click **OK**.
5. Right-click **Signature 1** and select **Open VPS files**.
6. From the **Window** menu in Prinergy VPS, choose the Separations Palette to view each versioned layer.  
**Note:** View each version to identify the differences and similarities. With only the **Common** layer selected, turn the two gold spot colors on and off to view the metric and imperial information.
7. Quit Prinergy VPS software.
8. Close `XX_LPV_B` Job Manager.
9. Destroy `XX_LPV_B`.