

Use automated page assignment tasks

You have a customer who supplies you with multiple input files that follow a specific naming convention format. You want to use APA to automatically assign these input files (refined PDF pages) to an imposition plan.

You need to create an APA rule that will process any files that match the specific naming convention.

- [Create a job](#)
- [Copy an input file and imposition plan to the jobs folder](#)
- [Create an APA rule](#)
- [Import an imposition plan](#)
- [Add and refine the input file using the APA rule](#)

Create a job

1. If it is not already open, start Prinergy Workshop.
2. In Job Finder, right-click your main group, and choose **New Job**.
3. Type the job name `XXJob29` (where `<XX>` represents your initials).
4. Click **Create**.
5. Minimize the Job Manager window.

Copy an input file and imposition plan to the jobs folder

1. From your workstation, locate: `Prinergy Activity Practice Files / Act_29_APA`
2. Copy the `Input File` and `Imposition` folders.
3. Restore Job Manager.
4. Right-click the **XX_Use_APA** job folder icon in the lower left corner of Job Manager. Select **Open Job Folder in File Browser**.
5. In the `XX_Use_APA` folder, open `UserDefinedFolders`.
6. Paste the `Input File` and `Imposition` folders into `UserDefinedFolders`.
7. Close the job folder.

Create an APA rule

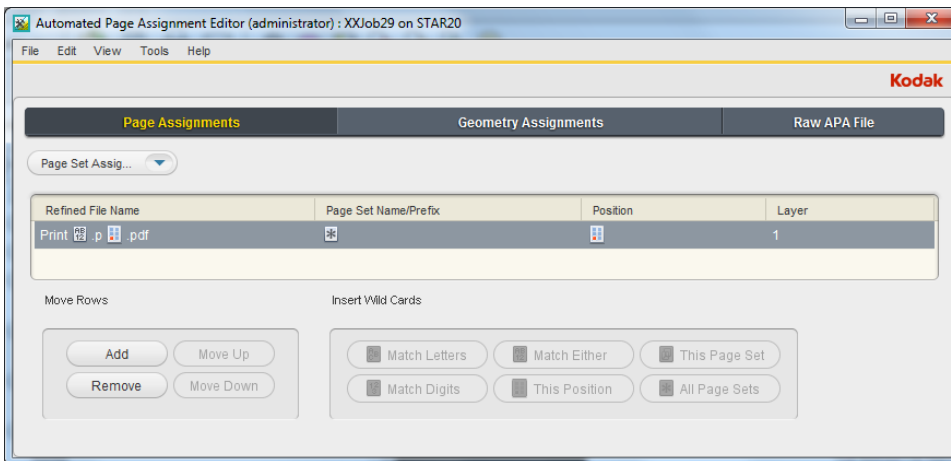
1. From the **Tools** menu, choose **Automated Page Assignment Editor**.
2. In the **Move Rows** section, click the **Add** button.
3. In the **Refined File Name** column:
Type: `Print`
Insert Wild Card: **Match Either**
Type: `.p`
Insert Wild Card: **This Position**
Type: `.pdf`
Full Refined File Name: **Print[Match Either].p[This Position].pdf**

4. In the **Page Set Name/Prefix** column:

Insert Wild Card: **All Page Sets**

Note: The **Position** column will be automatically identified with "This Position" wild card based on the **Refined File Name** column.

Refined File Name	Page Set Name /Prefix	Position	Layer
Print[Match Either].p[This Position].pdf	All Page Sets	This Position	1



5. From the **File** menu, choose **Save APA File**.
6. Close the **Automated Page Assignment Editor**.

Import an imposition plan

1. From the **File** menu, choose **Import Imposition**.
2. In the Import Imposition dialog box, click the **Job Folder** button and locate: UserDefinedFolders / Imposition / Print buyers Guide.jdf.
3. Click **Import**.
4. In the Start Process dialog box, click **OK**.

Add and refine the input file using the APA rule

1. Right-click the **Input Files** pane and choose **Add Input Files**.
2. In the Add Input Files dialog box, click the **Job Folder** button and locate: UserDefinedFolders/Input Files / Input File / Print Buyers Guide.pdf.
3. Click the **Add Selected** button to add the file to the **Files to Add** list.
4. In the **Options** section, place a check mark beside the **Process Selected Files Using Process Template** option.
5. In the Choose Process Template dialog box, locate the process template: **Refine > Refine > 1stRef-Normz**. Click **OK**.
6. In the Add Input Files dialog box, click **OK**.
7. In the Start Process dialog box, click the **Edit Process Template** button.

8. Select and open the **Impose** pane. Verify that the **Automated Page Assignment - Overwrite Assignments, Using Job Settings** option is enabled.
9. Click **OK**.
10. In the Start Process dialog box, click **OK**.
11. View Job Manager to monitor the automatic assignment of PDF pages to the imposition plan.
12. Close XX_Use_APA Job Manager.