

Access and use signature selection tasks

You use the same Preps templates for multiple jobs. Based on the type of work you produce, you aren't required to create new signature templates often. Your imposition workflow is mostly based on the use of pre-created templates.

- [Create a job](#)
- [Copy an input file to the job folder](#)
- [Add and refine the input file](#)
- [Create a new imposition](#)
- [Select imposition details](#)
- [Assign PDF pages to a page set](#)
- [Proof the imposition using Prinergy VPS](#)

Create a job

1. If it is not already open, start Prinergy Workshop.
2. In Job Finder, right-click your main group, and choose **New Job**.
3. Type the job name `XX_Siganture` (where `<XX>` represents your initials).
4. Click **Create**.
5. Minimize the Job Manager window.

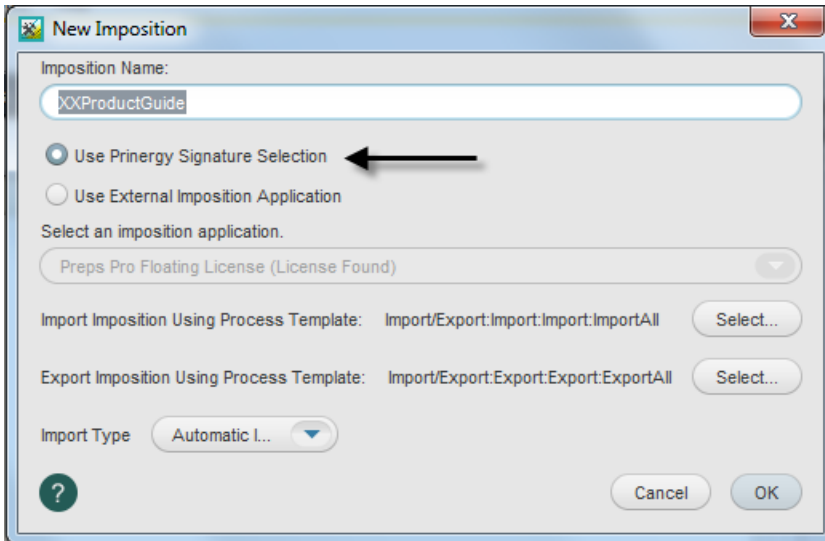
Copy an input file to the job folder and add input files to the job

1. From your workstation, locate: `Prinergy Activity Practice Files / Act_16_Signature Selection_Aliases / Input File`
2. Restore Job Manager.
3. Open the `Input Files` folder.
4. Drag the `Product Guide.pdf` to the Job Manager's **Input Files** area.
5. In the Add Input Files dialog box that appears, under **Options**, click **Select** and select the **1stRef-Normz** refine process template.
6. Click **OK**.
Your file is copied to the `UserDefinedFolders` folder.
7. In the Start Process dialog box, click **OK** to start the Refine process.

Create a new imposition

1. From the **File** menu, choose **Create New Imposition**.
2. In the New Imposition dialog box, type the imposition name `XXProductGuide` (where `<XX>` represents your initials).
3. Select the **Use Prinergy Signature Selection** option.
4. Confirm that the following import and export process templates are selected:
 - Import/Export:Import:Import:ImportAll
 - Import/Export:Export:Export:ExportAll
 - Import Type: Automatic Import

5. Click **OK**.

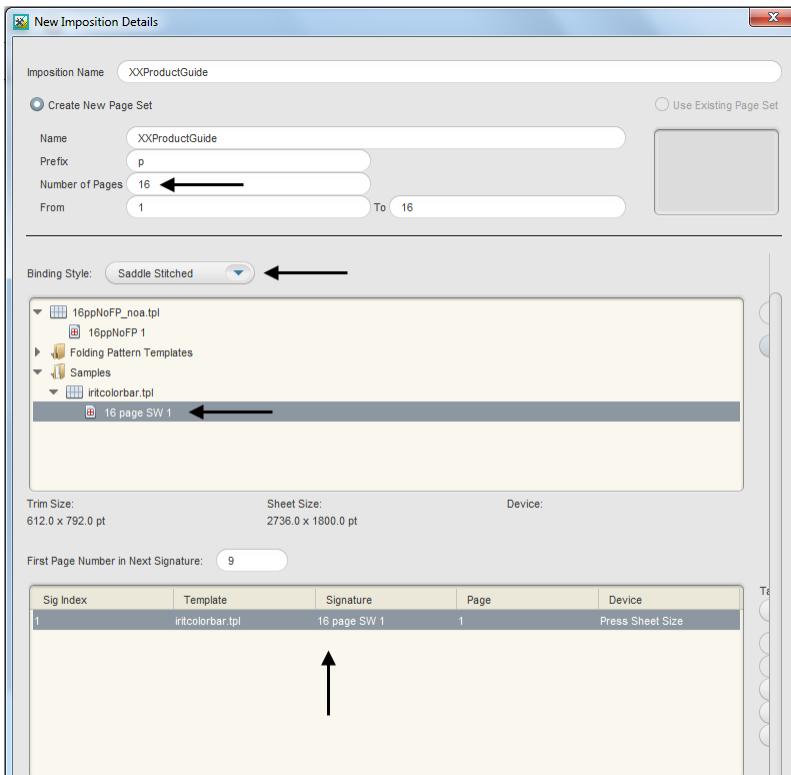


Select imposition details

1. View the New Imposition Details dialog box.
2. Select the **Create New Page Set** option and set the number of pages:
 - Number of Pages = **16**
3. Select the following binding style and template:
 - **Saddle Stitched**
 - **Folding Pattern Templates > US > Letter Saddle.tpl > 16 page SW**
4. Click **Add**
5. In the signature description section, select the line that reads as follows:
Sig Index = 1
Template = Letter Tutorial Saddle
Signature = 16 page SW
Page = 1
6. In the **Target Device** list, select **Press Sheet Size**.

7. Click **OK**.

The imposition is automatically imported into your XXJob16A job.



Assign PDF pages to a page set

1. In the **Pages** pane, right-click `Product Guide.p1.pdf` and choose **Select All Pages**.
2. Right-click any selected PDF page and select **Assign Page to Position**.
3. Verify that the each PDF page is correctly assigned to the appropriate page position in the imposition plan. Click **OK**.

Proof the imposition using Prinergy VPS

1. Select the **Signatures** view.
2. Right-click Signature 1: 1 and select: **Imposition Output > Virtual Proof > Virtual Proof.Imposed.600**.
3. Right-click Signature 1: 1 and select **Open VPS files**.
4. At the completion of the proof process, quit Prinergy VPS.
5. Close XX_Siganture Job Manager.