

# Refine an input file using preflight profiles

In this activity, you will use the Preflight+ option to preflight your input files and normalized files. You have a repeat customer who provides you with a variety of input files. You want to verify the stability of these files using the preflight+ profiles applied during the refine process. As part of the standards of your shop, no fonts can be TrueType, and any spot colors need to be converted to process (CMYK). In this activity, you will analyze and fix the files and generate a report in a PDF format.

**Note:** If you have already performed the *Use the Advanced Preflight option to preflight an input file with profile-based preflight during refine* activity, you can start with *Task 4: Create a preflight+ profile using the Callas pdfToolbox*.

- [Create a job](#)
- [Copy an input file to the job folder](#)
- [Add the input file to the job](#)
- [Create a preflight+ profile using the Profile Manager](#)
- [Refine the input file using the preflight+ profile](#)
- [Review the preflight report](#)

## Create a job

1. If it is not already open, start Prinergy Workshop.
2. In Job Finder, right-click your main group, and choose **New Job**.
3. Type the job name XX\_Advanced\_Preflight (where <XX> represents your initials).  
**Note:** If you performed Activity 7 (*Use the Advanced Preflight option to preflight an input file with profile-based preflight during refine*), this job is already created and you can use it for this activity as well (You only need to delete the existing subpages).
4. Click **Create**.
5. Minimize the Job Manager window.

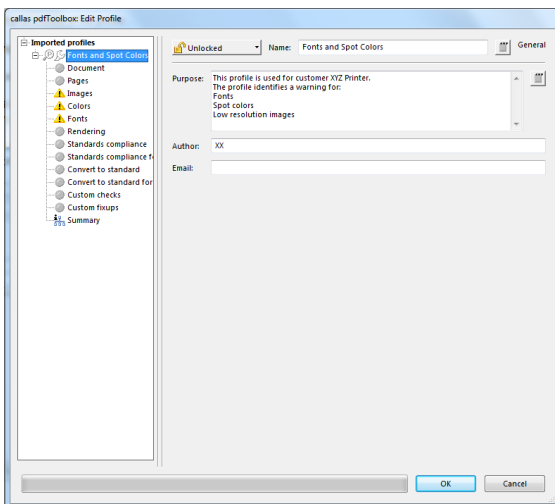
## Copy an input file to the job folder and add input files to the job

1. From your workstation, locate: Prinergy Activity Practice Files  
/ Act\_07\_Preflight / Input File
2. Restore Job Manager.
3. Open the Input File folder.
4. Drag the Wells Brochure.ps to the Job Manager's **Input Files** area.
5. In the Add Input Files dialog box that appears, under **Options**, clear the **Process Selected Files Using Process Template** check box.
6. Click **OK**.  
Your file is copied to the UserDefinedFolders folder.
7. Minimize the Job Manager window.

## Create a preflight+ profile using the Profile Manager

1. From the **Tools** menu, choose **Preflight+ Profile Manager**.
2. In the Preflight+ Profile Manager window, click **Add**.

3. In the callas pdfToolBox: Edit Profile window, in the **Name** box, type **Fonts and Spot Colors**.
4. In the **Purpose** box, type the following:  
This profile is used for customer XYZ Printer.  
The profile identifies a warning for:  
Fonts  
Spot colors  
Low resolution images
5. In the **Author** box, type your name. This specifies the original creator of the profile.
6. In the left pane, select **Fonts**.
7. Under **Font type is**, in the **TrueType** list, select **Warning**.
8. In the left pane, select **Colors**.
9. In the **Objects on the page use spot colors whose name is** list, select **Warning**.
10. Make sure that the **in this list** option is selected.
11. Add the following spot colors to the list: **PANTONE 1615 C**, **PANTONE 313 C**, and **PANTONE 554 C**.  
**Note:** Manually type the colors into the list, separated by a carriage return (do not use the add button).
  - a. In the left pane, select **Images**.
12. Under **Resolution of color or grayscale image is**, in the **lower than** list, select **Warning**, and in the **lower than** box, type 150.
13. In the left pane, under **Imported profiles**, select the profile that you have created. Review all settings and add any further information to the **Profile Description** box.

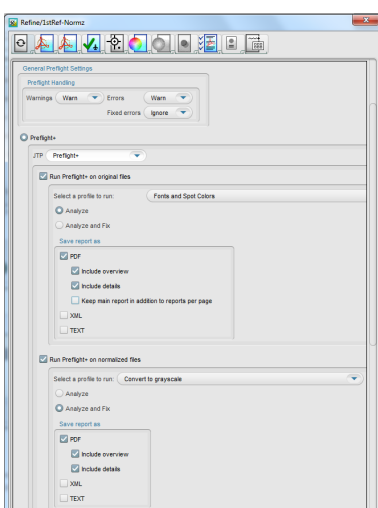


14. Click **OK**.  
Your new profile appears under **Customized profiles**.

## Refine the input file using the preflight+ profile

1. In the **Input Files** pane, right-click **Wells Brochure.ps** , and choose the process template: **Refine > Refine > 1stRef-Normz**
2. In the Start Process dialog box, click the **Edit Process Template** button.
3. Place a check mark beside **PDF Preflight** and open the section.
4. In the **Warnings** list, select **Warn**.

5. In the **Errors** list, select **Warn**.
6. Make sure that the **Preflight+** option is selected.
7. In the **Run Preflight+ on original files** area, in the **Select a profile to run** list, select the profile that you created earlier, **Fonts and Spot Colors**.
8. Select the **Analyze** option.
9. Make sure that the **Include overview** and **Include details** check boxes are selected, so that the PDF will include all the required information.
10. Clear the **Keep main report in addition to reports per page** check box, to save space on your server.
11. In the **Run Preflight+ on normalized files** area, in the **Select a profile to run** list, select the **Convert to grayscale** profile.
12. Select the **Analyze and Fix** option.
13. Make sure that the **Include overview** and **Include details** check boxes are selected, so that the PDF will include all the required information.



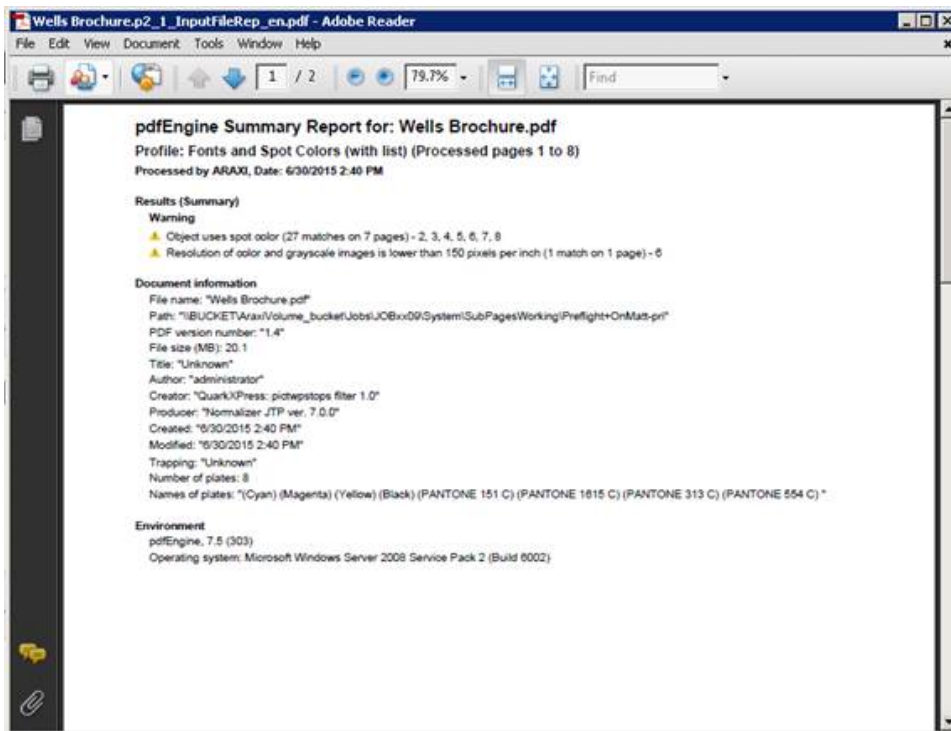
14. Close the **PDF Preflight** section.
15. Place a check mark beside **ColorConvert**.
16. Place a check mark beside **Spot Color Handling** and open the section.
17. Under **Map Spot Colors**, select the **Enable Spot Color Mapping** check box, and then select the **Map All Spot Colors to Process** option.
18. Click **OK**.
19. In the Start Process dialog box, click **OK**.

**Note:** Editing this process template is temporary. When you modify a process template in this way, any changes to the process template are discarded when the process is complete. The changes do not affect the original process template and are not saved with the job. You cannot redo the same process without making the same changes to the process template again.

## Review the preflight report

1. Review all issues identified during the preflight process.
2. In the **Pages** pane, select **Wells Brochure.p2.pdf** and from the **Jobs** menu, select **Preflight+ Input File Report Viewer**.

3. View that the Input file report indicates that a low-res image and spot colors were detected (as per the input profile that you created).



4. In the **Pages** pane, select Wells Brochure.p2.pdf and from the **Jobs** menu, select **Preflight+ Refined File Report Viewer**.
5. View that the reports indicate that the files are now displayed in grayscale.

