

Automatically convert specific spot colors to process

You process a repetitive job that contains multiple spot colors. For this particular job, the customer has asked you to preserve one spot color, to map an existing spot color to the preserved spot color, and to convert all remaining spot colors to process color. You want to automate this process to ensure the spot color conversion is handled quickly and correctly every time.

- [Revert PDF pages to their original color state](#)
- [Create a refine process group and template](#)
- [Refine an input file](#)
- [Delete the refine process template and process template group](#)

Revert PDF pages to their original color state

1. In the **Input Files** pane, right-click **Color Mapping.pdf**, and choose the process template: **Refine > Refine > 1stRef-Normz**
2. In the Start Process dialog box, click **OK**.
3. View the **Page Colors** column in Job Manager. The PDF pages contain all original spot color information again.

Create a refine process group and template

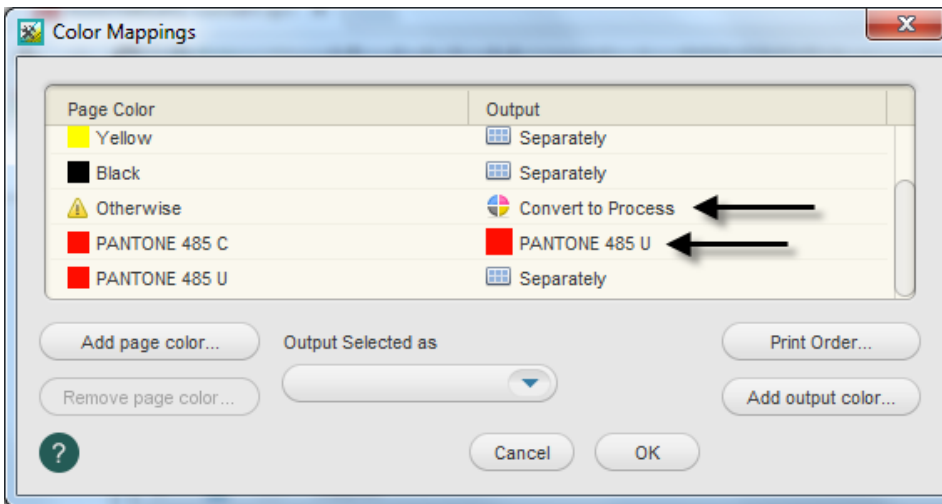
1. From the **Tools** menu, choose **Process Template Editor**.
2. Select the **Refine** group.
3. From the **File** menu, choose **New Process Template Group**.
4. Name the group **XXRefineGroup** (where <XX> represents your initials).
5. Right-click your **XXRefine Group** and choose **New Process Template**.
6. From the **File** menu, select **Save**.
7. In the Save Process Template dialog box, name the process template **XXConvert Spot** (where <XX> represents your initials).
8. Click the **Create Process Template** button.
9. Open the **Spot Color Handling** section.
10. Select **Enable Spot Color Mapping**.
11. Select the **Customize Spot Color Mapping** option.
12. Click the **Color Mapping** button.
13. In the Color Mapping dialog box, click the **Add page color** button.
 - In the **Selected Libraries** list, locate the **PANTONE+ V3 Solid Coated** and **PANTONE+ v3 Solid Uncoated** libraries. If they are not displayed in the **Selected** list, add them from the **Factory Libraries** list.
 - In the **Search** box, type, **PANTONE 485 U**. Click **Add**.
This spot color will be preserved and output separately.
14. Click the **Add page color** button again.
 - In the **Selected Libraries** list, locate the **PANTONE+ V3 Solid Coated** and **PANTONE+ v3 Solid Uncoated** libraries. If they are not displayed in the **Selected** list, add them from the **Factory Libraries** list.

- In the **Search** box, type **PANTONE 485 C**. Click **Add**. This spot color will be identified in the system, and then mapped to the spot color **PANTONE 703 C**.
- In the Color Mappings dialog box, select **PANTONE 485 C**.
- From the **Output Selected as** list, choose **PANTONE 485 U**.

15. In the **Page Color** column, select **Otherwise**.

16. From the **Output Selected as** list, choose **Convert to Process**. Click **OK**.

Otherwise page color defines the default action for colors not listed in the Color Mappings dialog box. In this situation, PANTONE 355 C was not identified, so it will follow the defined action of Otherwise and be converted to process.



17. From the **File** menu, select **Save**.

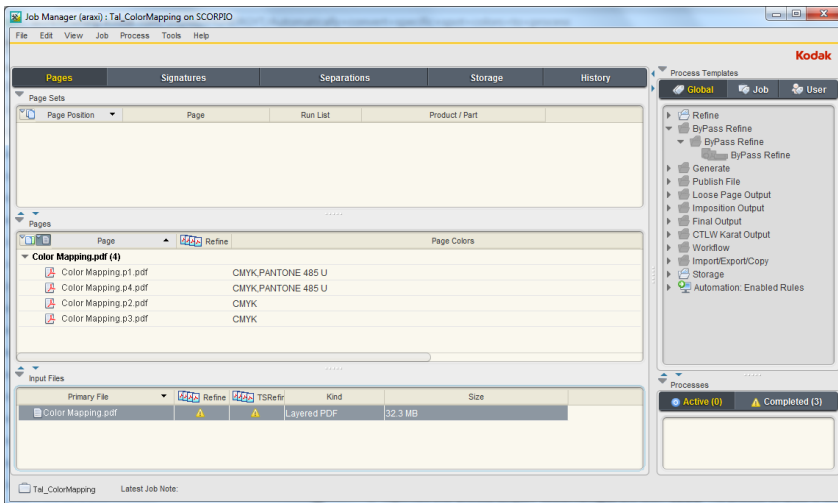
18. Close the process template.

19. Close Process Template Editor.

Refine an input file

1. In the **Input Files** pane, right-click **Color Mapping.pdf**, and choose the process template: **Refine > XXRefine Group > XXConvert Spot**
2. In the Start Process dialog box, click **OK**.

3. View the **Page Colors** column in Job Manager. The only colors now listed are **CMYK** and **PANTONE 485 U**.



Delete the refine process template and process template group

1. From the **Tools** menu, choose **Process Template Editor**.
2. In the **Refine** group, open your refine group **XXRefine Group**.
3. Right-click your process template **XXConvertSpot** and select **Delete**. The process template is deleted.
4. Right-click your refine group **XXRefine Group** and select **Delete**. The process template group is deleted.
5. Close the Process Template Editor.