

Manually convert specific spot colors to process

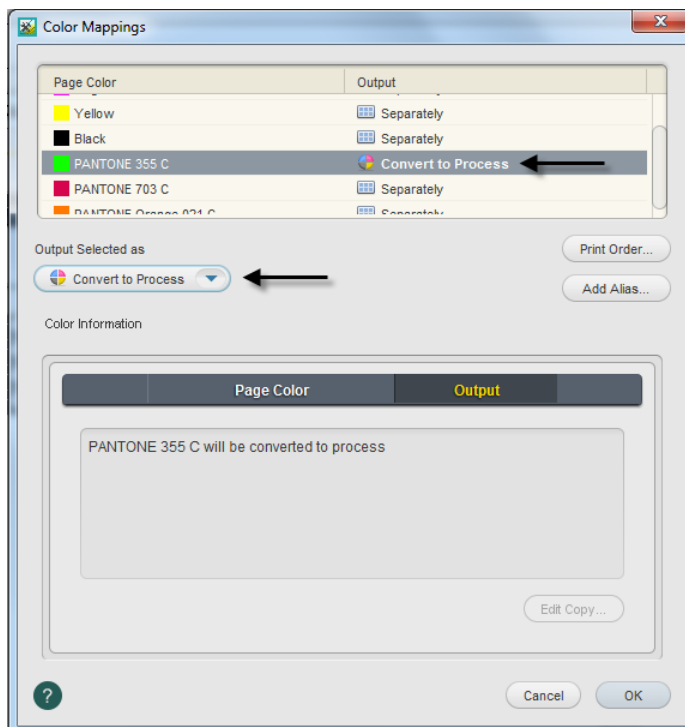
You have received job files that contain three spot colors. Your customer requests that one spot color be preserved, one spot color be mapped to a correct spot color name, and one spot color be converted to process CMYK.

Revert PDF pages to their original color state

1. In the **Input Files** pane, right-click `Print Buyers Guide.pdf` , and choose the process template: **Refine > Refine > 1stRef-Normz**
2. In the Start Process dialog box, click **OK**.
3. View the **Page Colors** column in Job Manager. The PDF pages contain all original spot color information again.

Refine PDF pages again to modify color mapping settings

1. The following procedure steps outline how to convert one spot color to process CMYK.
 - a. In the **Pages** pane, select all PDF pages.
 - b. Right-click any selected PDF page, and choose the process template: **Refine > Refine > 2ndRef-MapColors**
 - c. In the Start Process dialog box, click the **Color Mapping** button.
 - d. In the Color Mappings dialog box, select **PANTONE 355 C**.
 - e. From the **Output Selected As** list, choose **Convert to Process**. View the change in the **Output** column.



2. The following procedures outline how to map an existing spot color to an alias spot color name. In this scenario, the supplied input file contains the wrong PANTONE color name. To correct this, an alias color name is created and used as the correct PANTONE color name.
 - a. In the Color Mappings dialog box, select **PANTONE 485 U**.
 - b. From the **Output Selected As** menu, choose **PANTONE 485 C**.



- c. Click **OK**.
- d. In the Start Process dialog box, click **OK**.

Note: Editing this process template is temporary. When you modify a process template in this way, any changes to the process template are discarded when the process is complete. The changes do not affect the original process template and are not saved with the job. You cannot redo the same process without making the same changes to the process template again.
- e. View the **Page Colors** column in Job Manager. Note the page colors have been modified to:
 - **CMYK**
 - **PANTONE 485 C**