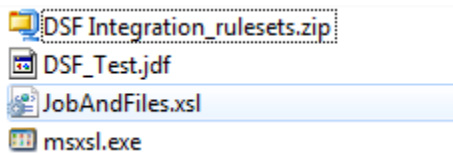
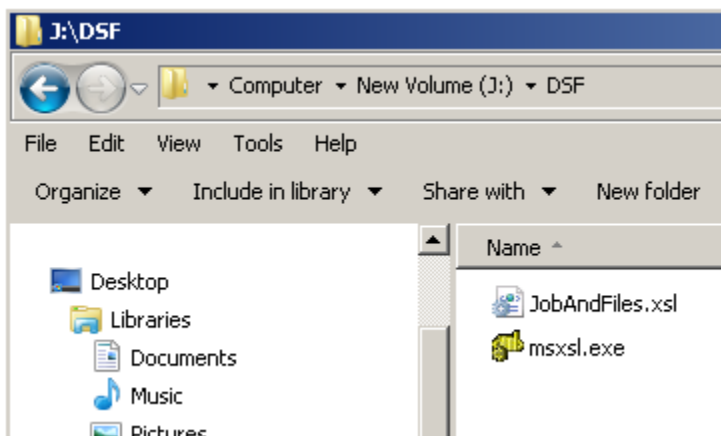


Setting up the integration between Prinergy and DSF

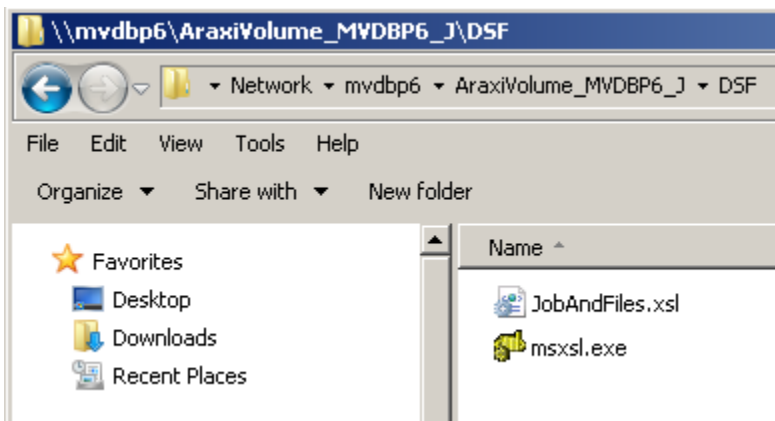
Obtain the following installation files:



1. Create a folder that is accessible via a UNC path and copy the `JobAndFiles.xml` and `msxsl.exe` files to this folder.
For example, on the J: drive of the primary server, create a `DSF` folder as follows:

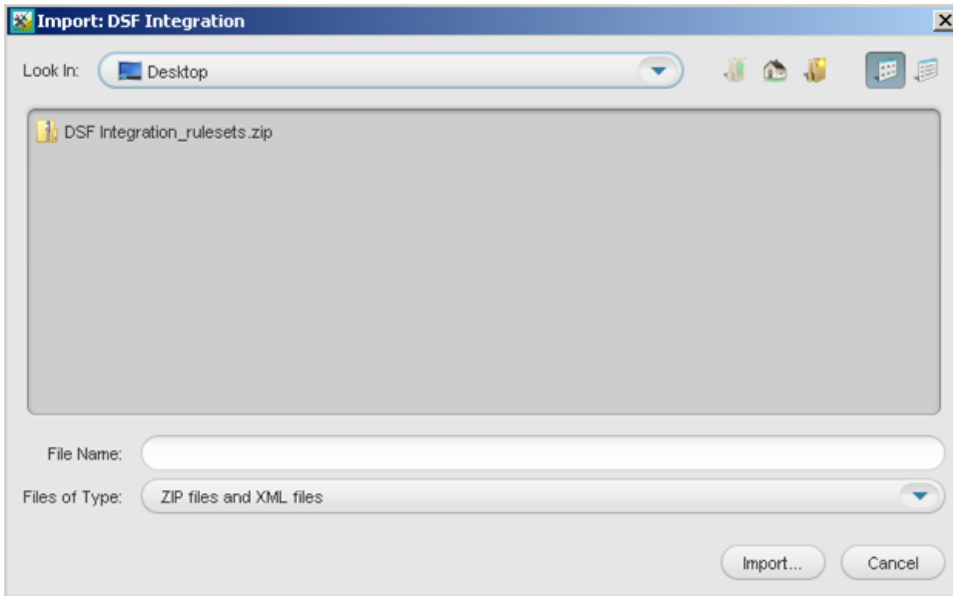


2. Make sure that the folder can be accessed via a UNC path. For example:



3. In Workshop, create a job named `DSFBucketJob`. This job will be used to host a hot folder that processes an XML file that will be extracted from the JDF file.
4. From Workshop, open Rule Set Manager.

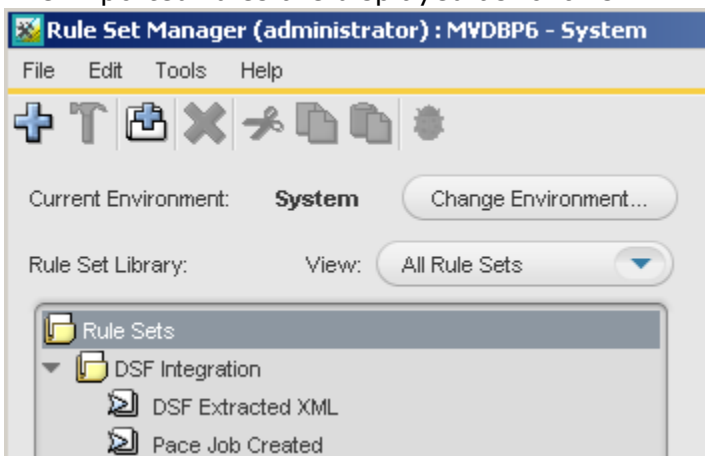
5. In Rule Set Manager, from the **File** menu, select **Import**, browse to the DSF Integration_Rulesets.zip file, and import the rules into the newly created group.



6. When prompted whether to import additional resources, select all applicable resources, and click **OK**.

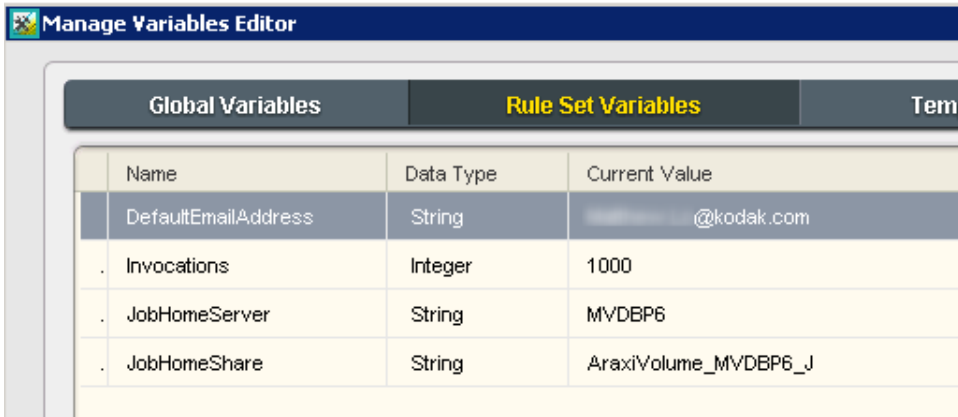


The imported rules are displayed as follows:



7. Open the **DSF Extracted XML** rule.
8. From the **Edit** menu, select **Manage Variables**.

9. In the Manage Variables Editor dialog box, click the **Rule Set Variables** tab, and enter the following values for the variables:

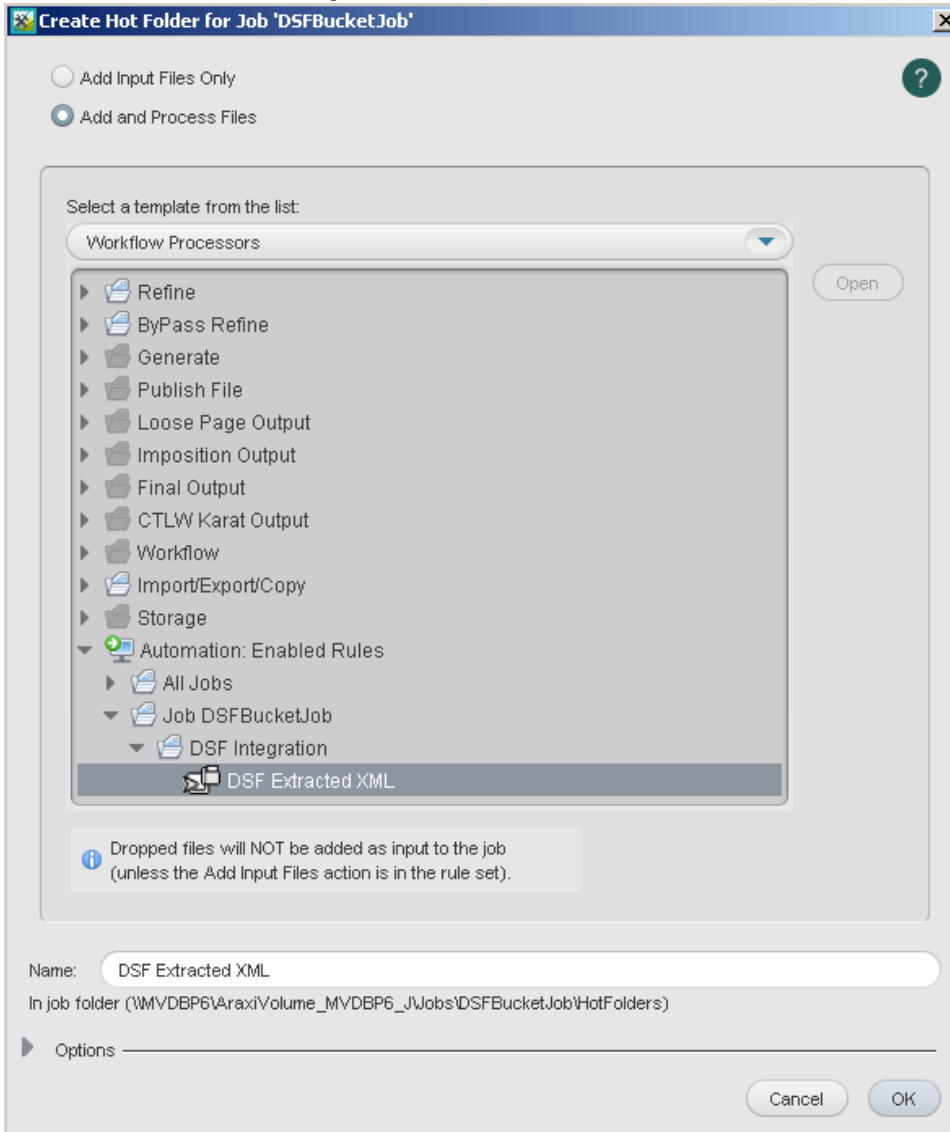


The screenshot shows the 'Manage Variables Editor' dialog box with the 'Rule Set Variables' tab selected. The dialog has three tabs: 'Global Variables', 'Rule Set Variables', and 'Temp'. Below the tabs is a table with three columns: 'Name', 'Data Type', and 'Current Value'. The table contains four rows of variables.

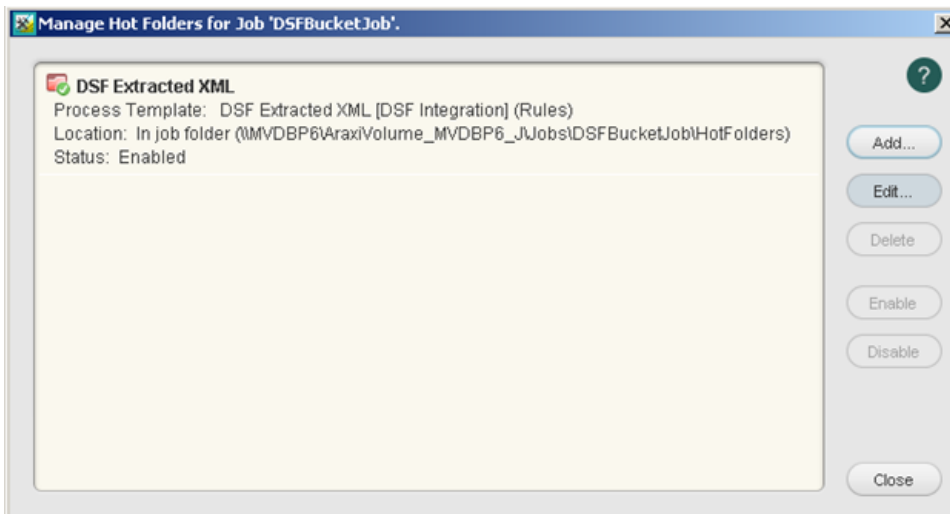
Name	Data Type	Current Value
DefaultEmailAddress	String	...@kodak.com
Invocations	Integer	1000
JobHomeServer	String	MVDBP6
JobHomeShare	String	AraxiVolume_MVDBP6_J

- **DefaultEmailAddress**—the address to which error emails will be sent
 - **Invocations**—the number of jobs created before a reminder email is sent out to the **DefaultEmailAddress** to remind the operator to clean up or delete jobs.
 - **JobHomeServer**—the name of the server that will be used in the **Create Job** action
 - **JobHomeShare**—the name of the share on the **JobHomeServer** server that will be used in the **Create Job** action
10. Save the rule set. If the **Save** option is not available, make a change to the Rule Set (such as adding an action after the **Email 3** action), then undo the changes, and then save the rule set.
11. In the **DSFBucketJob** job, enable the **DSF Extracted XML** rule.

12. In the **DSFBucketJob** job, create a hot folder attached to the **DSF Extracted XML** rule.

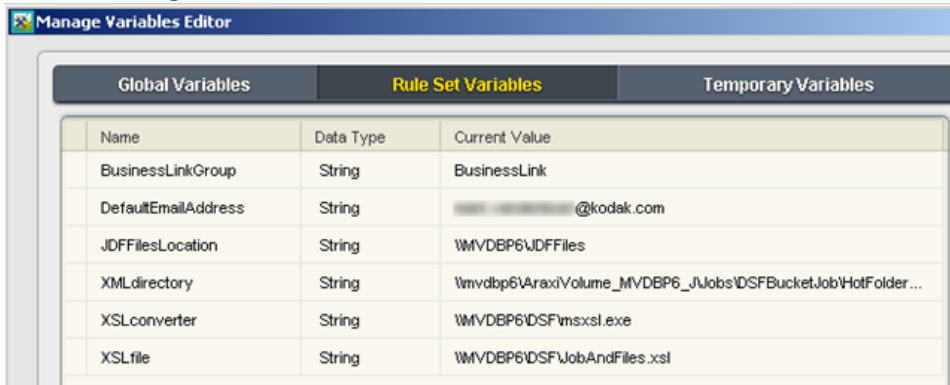


The hot folder is created.



13. Open the **DSF Job Created** rule.
14. From the **Edit** menu, select **Manage Variables**.

15. In the Manage Variables Editor dialog box, click the **Rule Set Variables** tab, and enter the following values for the variables:



The screenshot shows the 'Manage Variables Editor' dialog box with the 'Rule Set Variables' tab selected. It contains a table with three columns: Name, Data Type, and Current Value. The table lists six variables: BusinessLinkGroup, DefaultEmailAddress, JDFFilesLocation, XMLdirectory, XSLconverter, and XSLfile, each with a String data type and a specific current value.

Name	Data Type	Current Value
BusinessLinkGroup	String	BusinessLink
DefaultEmailAddress	String	...@kodak.com
JDFFilesLocation	String	WMVDBP6\JDFFiles
XMLdirectory	String	\\mvdbp6\AraxiVolume_MVDBP6_J\Jobs\DSFBucketJob\HotFolder...
XSLconverter	String	WMVDBP6\DSF\msxsl.exe
XSLfile	String	WMVDBP6\DSF\JobAndFiles.xsl

- **BusinessLinkGroup**—the group in Workshop in which Business Link creates its jobs
 - **DefaultEmailAddress**—the address to which error emails will be sent
 - **JDFFilesLocation**—the folder in which Business Link puts the JDF files. Typically the location is `\\primary-name\JDFFiles`
 - **XMLdirectory**—the UNC path of the hot folder created in the **DSFBucketJob** job
 - **XSLconverter**— the UNC path of the `msxsl.exe` file
 - **XSLfile**— the UNC path of the XSL file used to extract data from the JDF file
16. Enable the **DSF Job Created** rule in the system context.