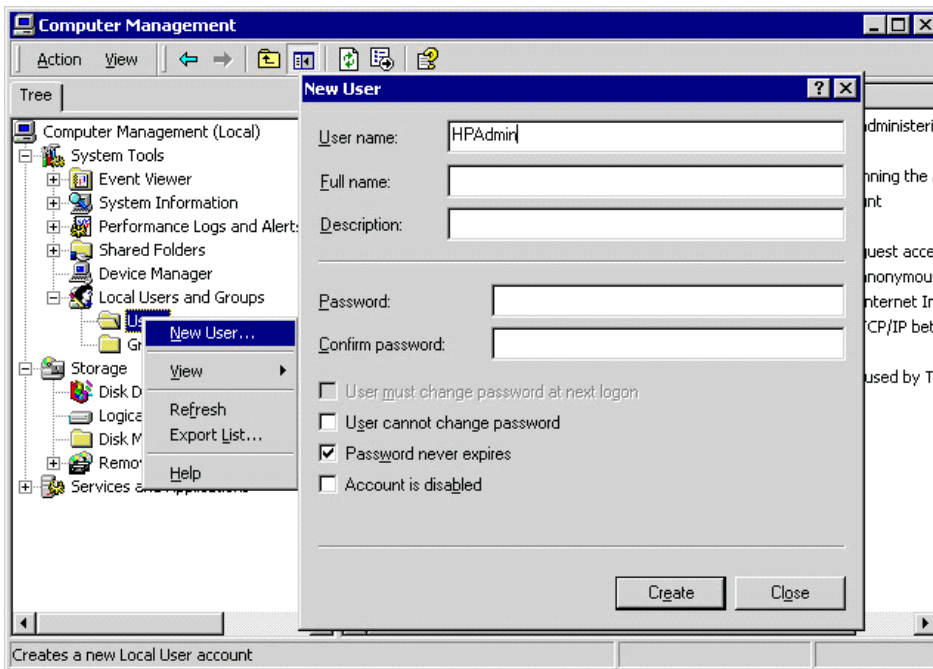


Create an account on the HP front end for Prinergy access

Create and configure an administrator account on the HP Production Flow front end to allow Prinergy access.

If you have several HP systems, perform these steps for each system.

1. On the HP Production Flow front end, create a new account with administrator rights. Give it a meaningful user name— for example, HPAdmin.
You cannot use the existing account that is used by the HP Production Flow Web services because it is a local system account. It is not possible to give a local system account permission to access a remote file server.
2. On the HP front end, change the properties of the Web services so that they start up under the new (HPAdmin) user account that you created.
3. On the Prinergy job home server, add the new (HPAdmin) user account. The password for this account must match the password on the HP front end.



Next: Perform the procedure to connect Prinergy and the HP front end.