

Special Toner handling - option 3

Special Toner is typically a fifth print station on the digital press. It is usually used to highlight specific areas on the print and provide special effects on the printout.

In this activity, you will use the special toner High Gloss Clear coat as an example.

Create a job

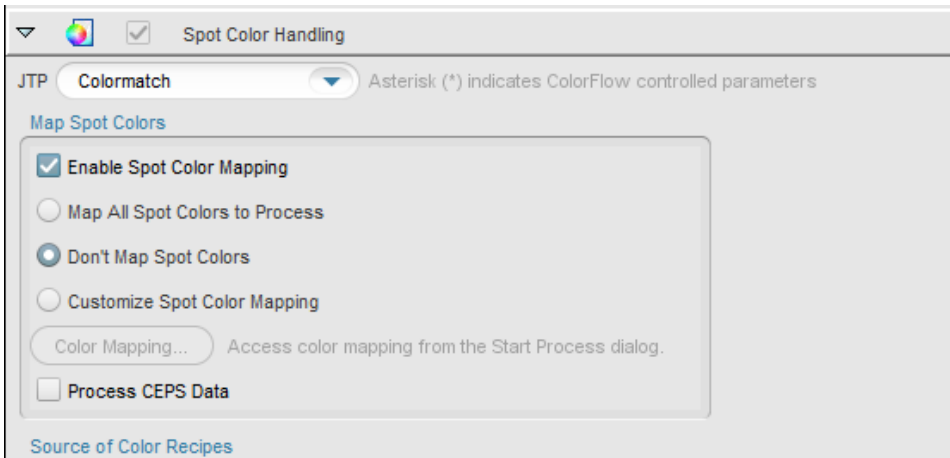
1. If it is not already open, start Prinergy Workshop.
2. In Job Finder, right-click your main group, and choose **New Job**.
3. In the Create New Job dialog box, select the server name and volume.
4. Type the job name `XX_Spot_Color` (where `XX` represents your initials).
5. Click **Create**.
6. Minimize the Job Manager window.

Copy an input file to the job folder and add input files to the job

1. From your workstation, locate: Prinergy Activity Practice Files
/ `Act_46_Spot_Color` / `Input File`
2. Restore Job Manager.
3. Open the `Input File` folder.
4. Drag the `China Adventure with Varnish.pdf` file to the Job Manager's **Input Files** area.
5. In the Add Input Files dialog box that appears, under **Options**, clear the **Process Selected Files Using Process Template** check box.
6. Click **OK**.
Your file is copied to the `UserDefinedFolders` folder.
7. Minimize the Job Manager window.

Refine the input file

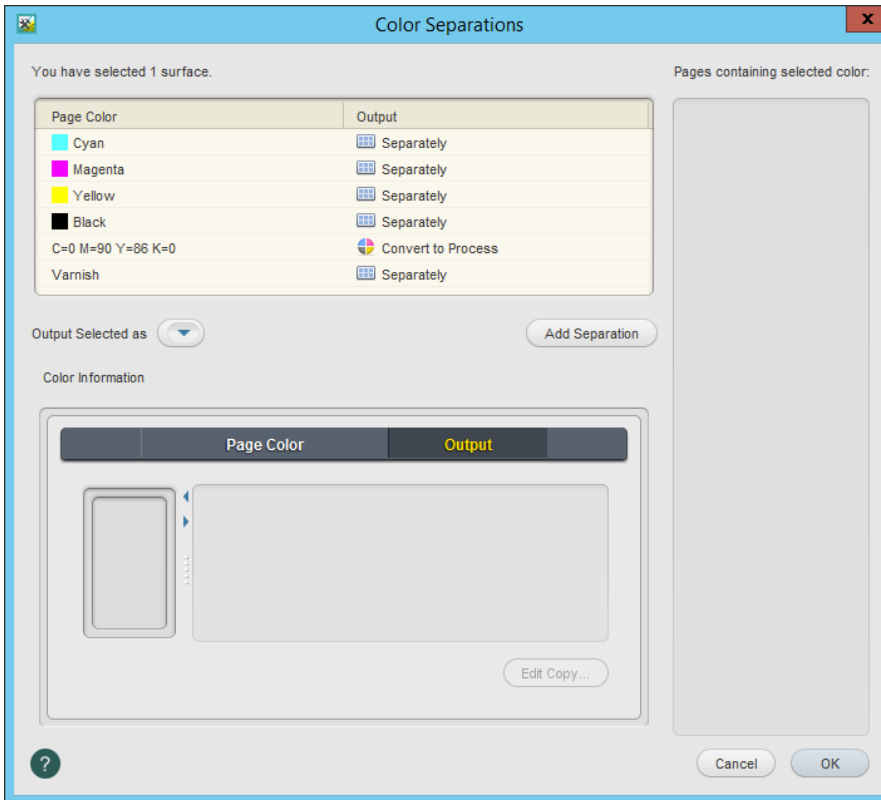
1. In the **Input Files** area, right-click the `China Adventure with Varnish.pdf`, and select the process template: **Refine > Refine > 1stRef-Normz**.
2. In the Start Process dialog box, click the **Edit Process Template** button.
3. Expand the **Spot Color Handling** section.
4. In the **Map Spot Colors** area, select the **Enable Spot Color Mapping** check box.
5. Select the **Don't Map Spot Colors** option.



6. Click **OK** and then click **OK** again.
7. When the refine process is completed, click **Close**.

Create an imposition for the refined page

1. In the `UserDefinedFolders` folder, create a new folder called `Imposition`.
2. Drag the `ChinaLayout.job` from the `Act_46_Spot_Color` folder into the `Imposition` folder.
3. From the **File** menu, select **Create new Imposition**.
4. In the **Imposition Name** box, type `ChinaLayout`. Make sure that the **Use Prinergy Signature Selection** option is selected, and click **OK**.
5. In the New Imposition Details window that appears, in the **Number of Pages** box, type 1, and select the **Use existing Preps Job** check box.
6. In the Open window that appears, locate and select the `ChinaLayout` file that you copied into the `Imposition` folder, and click **Open**.
7. In the New Imposition Details window, click **OK**. (If you are asked to continue, click **OK**).
8. When the new imposition is created, click **Close**.
9. Drag the refined page to the single page position that is available in the **Page Sets** area.
10. Click the **Signatures** tab.
11. Select the signature that was created and from the **Edit** menu, select **Color Separations**.
12. In the Color Separations dialog box, make sure that the red spot color is converted to process, and the varnish spot color is set to **Separately**.



13. Click **OK**.

Submit a job with spot color to a digital press

1. On the **Signatures** tab, in the **Imposition Plans** area, select the imposition that you created.
2. Right-click the selected pages and from the menu that appears, select **Send to Digital**.
3. From the list of digital devices that appears, select the required device.
4. In the Digital Job Ticket Editor that appears, click the **Substrate** tab.
5. Select the required substrate and then in the **Output Profile** list, select the device or paper profile that was specifically set up for the printing condition of the device you are printing to.
6. Click the **Special Toner** tab.
Note: Options on this tab may vary depending on the selected digital device. Some of the settings or setting values may not be available. Also, there may be additional settings available for specific devices which are not documented here.
7. In the **Special Toner** list, select the required special toner name. The **Special Toner** list contains only toners that are available on the selected digital device.
8. In the **Separation To Print** list, select the separation name used in the document from the list of separation names, or select **Custom** if the separation name does not appear in the list.
9. If you selected **Custom** in the **Separation To Print** box, in the **Separation Name** box, type the exact name of the separation to be printed using the special toner. In this activity, in the **Separation Name** box, type Varnish.

? Unknown Attachment

10. Click **Submit**.