

# Preps 9.0 new features, fixed bugs, and known limitations

## New features and enhancements

Support for Mac OS 10.15 Catalina

Preps is now 64-bit native

KMS performance improvements for slow networks for Marks and Templates - See [Preps Best Practices and Limitations - KMS](#)

## Fixed bugs

Referenced PR	Description
PREPS-16546	JDF/PJTF output crash Preps with -OUTPUT_PS_MARKSFLATS_FOR_PDF:NO
PREPS-16372	Preps fold mark starts from imposition trim in Preps 8.3 sandbox
PREPS-16365	Crop marks appear in adjacent pages bleed box
PREPS-16180 PREPS-16243	Regression: Mark anchored to Imposition with Bleed is incorrectly shifted when negative creep is applied.
PREPS-16036	StrippingParams Reader will only add 1 section of an N-Up wTurn Signature
PREPS-15909	Bottling is incorrect when pages are foot to foot for classic impositions and custom folding patterns.
PREPS-15705	Preps crashes when Autogang preset uses stock size greater than 4200 square inches.
PREPS-14621	Asymmetrical custom fold patterns are numbered incorrectly.

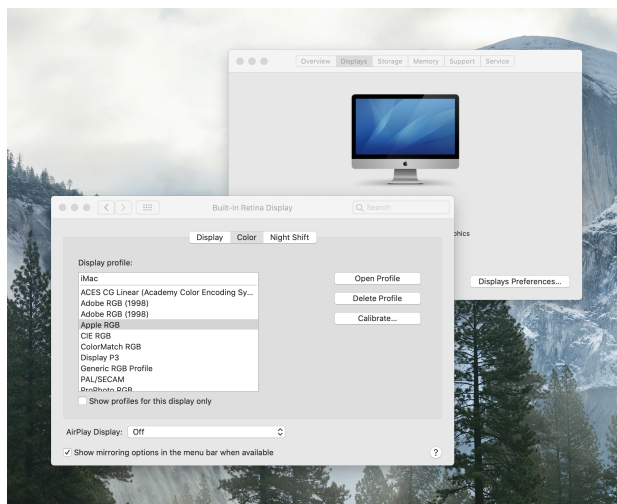
## Known limitations new to Preps 9

### Big Sur (Mac 11.0) Support - to come in Preps 9.0.2 Standalone

Preps 9 is not supported with MAC 11.0 Big Sur

**Assembly View, Press Runs View and Textmarks are blurry on MACs with specific graphics card - FIXED in Preps 9.0.1 (coming soon)**

- **Workaround for Preps 9.0.0** - change Built-in Retina Display/Color to "**Apple RGB**".



The following graphics cards are known to be affected:

Radeon Pro Vega 56
Radeon Pro 580x
Radeon R9 M390
Radeon Pro 5300
Radeon Pro 5300M/Intel UHD 630
Radeon Pro 5300 XT
Intel Iris Plus Graphics 1536 MB

Referenced PR	Description
PREPS-16542	File>>Close or Cmd + W causes Preps application to Quit - Mac Only
PREPS-16564	Can't select more than one section in Preps 9.0 build 466 (MAC only)
PREPS-16385	Preps no longer uses colorf_profiler to get Mac computer id so drop in fix no longer works.
PREPS-16567	Preps Print Job Layout Report Fails (Win only) - Regression from Preps 9.0.0 Build 444 integrated
PREPS-16594	Preps Migration Utility does not run on a 64 bit MAC
PREPS-16614	JDFs output from non-English versions of Preps do not honor SSI:Media Origin (Punch distance)(Mac)

PREPS-136	Output jdf/pjtf with ps mark flats if you add customized media ,the jdf/pjtf and their ps mark flats clockwise rotation 90 degree unexpectedly
-----------	--

## Additional Known limitations

**When you use "Odd" or "Even" keywords in the SmartMark Range field, the mark will be applied only for the first press run.**

This happens for all marks when the mark anchor is anything except **Gutter**. See [Common settings for SmartMarks](#).

**Workaround:** Add `t:` before the Range keyword. For example, `t:odd` or `t:even`.

**If you add a new sheet while in template editing mode, you will no longer be in template editing mode.**

You can still save as template. If you duplicate an existing press run you will remain in template editing mode.

**When adding press runs to a job from a template, you cannot rename a signature after it has been edited.**

Once you save the job for the first time you will be able to edit the name of a signature.