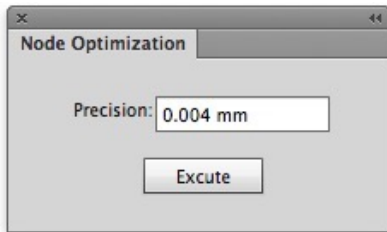


# Node Optimization

Use the **Node Optimization** Tool to remove unnecessary path nodes without affecting the original path appearance. Use this tool to optimize the paths of the trapping area made by Prinergy.

1. Select the path you want to work with.
2. In the Illustrator menu bar, from the **Window** menu, select **Prinergy Tools > Tool > Node Optimization**.

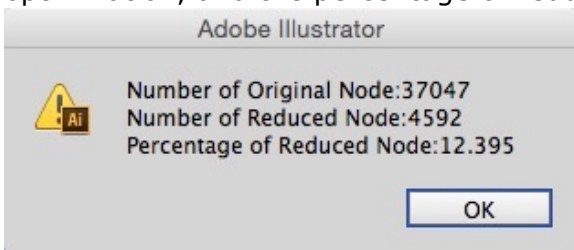
The Node Optimization dialog box appears.



3. Set the optimization **Precision**, including its unit of measure, and click **OK**.  
If you don't change the precision unit, Node Optimization will use the document's default unit of measure.

**Note:** The larger the precision value, the more nodes will be optimized, but path deformation might occur during path simulation.

A report appears, displaying the original number of nodes, the number of nodes after optimization, and the percentage of reduction.



This image illustrates the result of node optimization:

