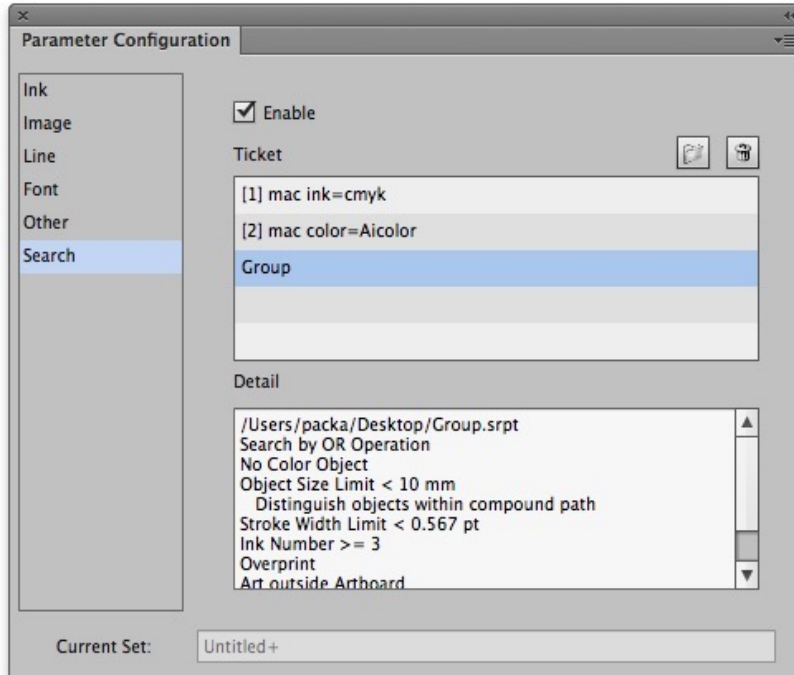


# Setting Search parameters

1. In the Parameter Configuration interface, select **Search**.



2. To import a Search ticket, select the **Enable** check box.
3. To import up to 20 search tickets, click the Open button.  
The Inspect Tool will check the ticket.  
The **Detail** box will show detailed information for the selected Search ticket.
4. To delete a ticket, select the Search ticket and then click the Delete button.  
The ticket will be deleted and the related item also will be deleted.