

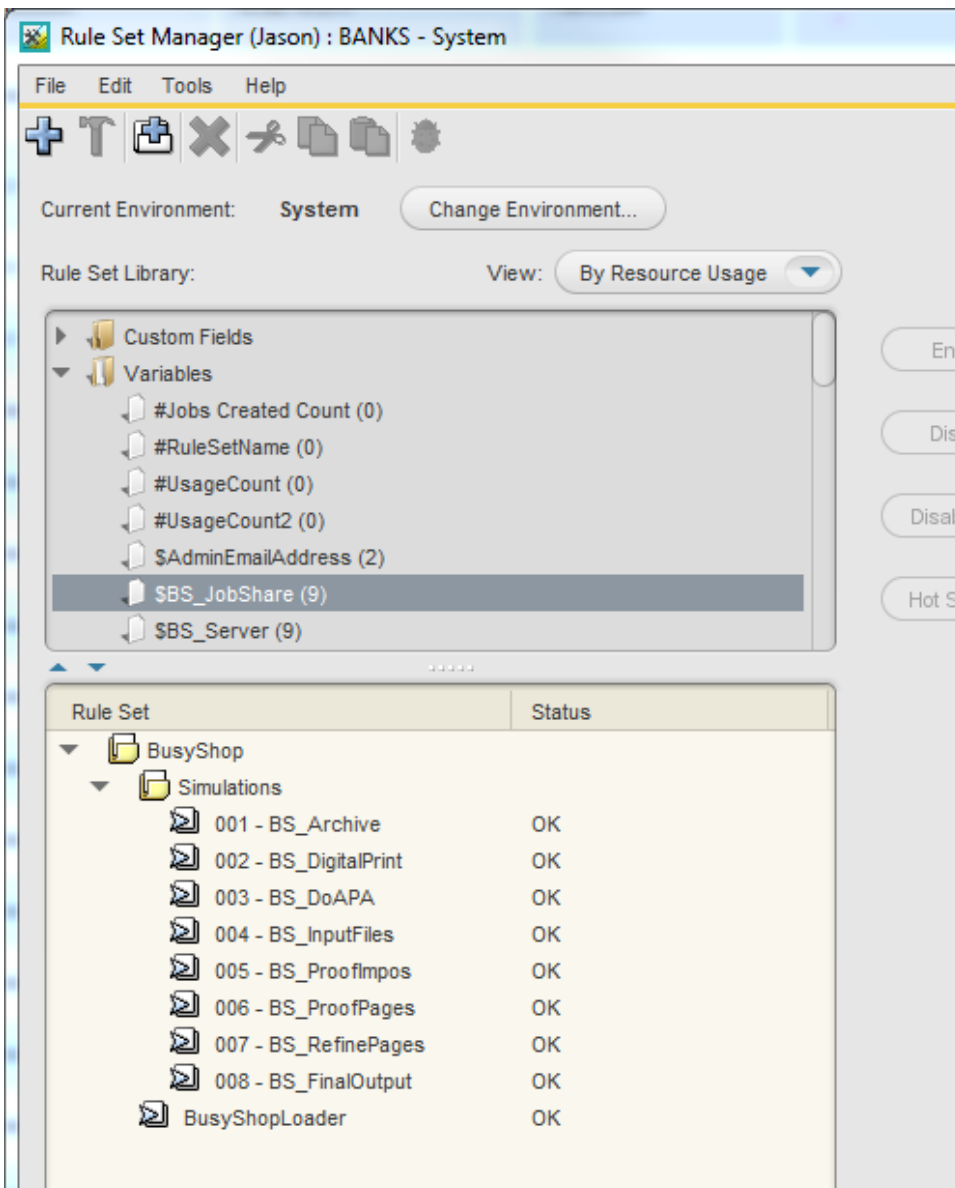
Identifying where global variables are used

In Rule Set Manager, you can see in which rule sets a selected global variable is used.

1. In Rule Set Manager, from the **View** menu on the top-right corner of the **Rule Set Library** pane, select **By Resource Usage**.
2. In the **Rule Set Library** pane, open the **Variables** folder.
3. Select the global value that you want to check where it is used.

A list of the rule sets that use the selected global value appears in the pane below the **Rule Set Library** pane.

In the example below, you can see that the global variable `$BS_JobShare` is used in nine rule sets.



Note: If you try to delete a global variable that is in use in a rule set, the operation fails with a message that the variable is in use and cannot be deleted. Before the variable can be deleted, all references to it must be removed from all rule sets.

