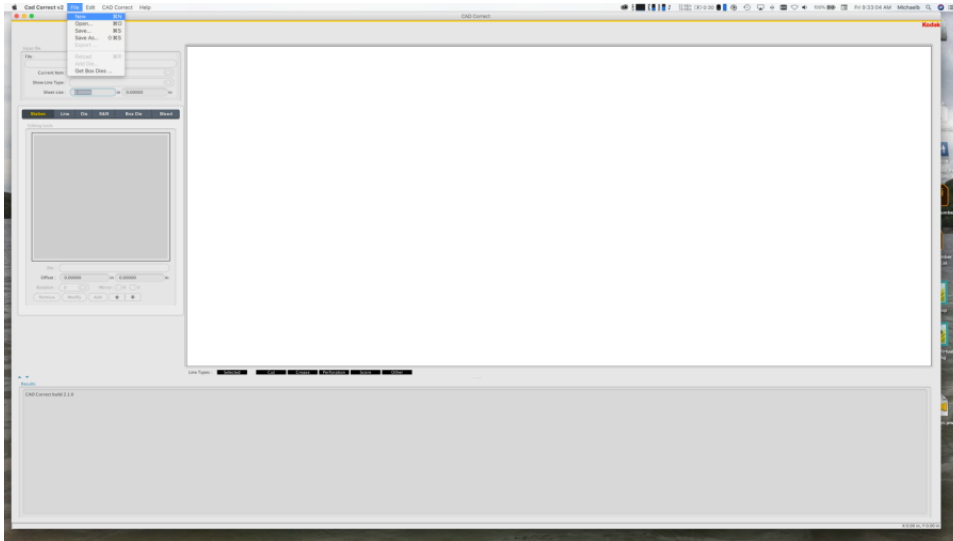


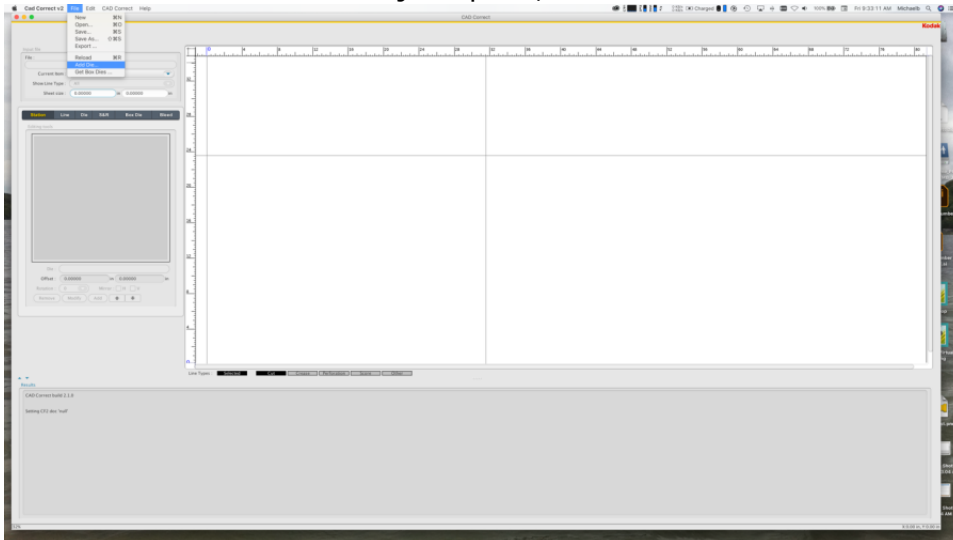
Open the file in CAD Correct software

In the Kodak CAD Correct software, perform these steps:

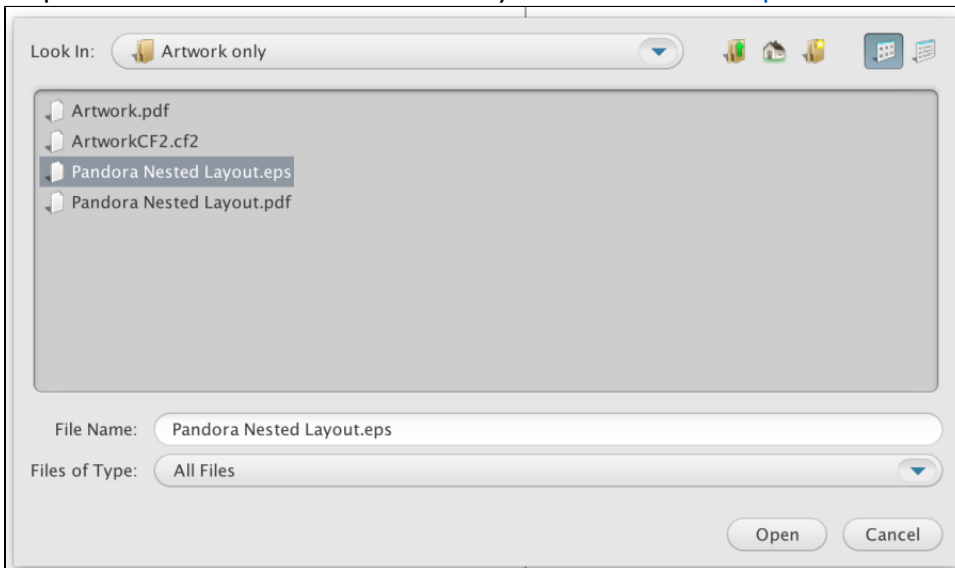
1. Launch the Kodak CAD Correct application.
2. From the **File** menu, select **New**.



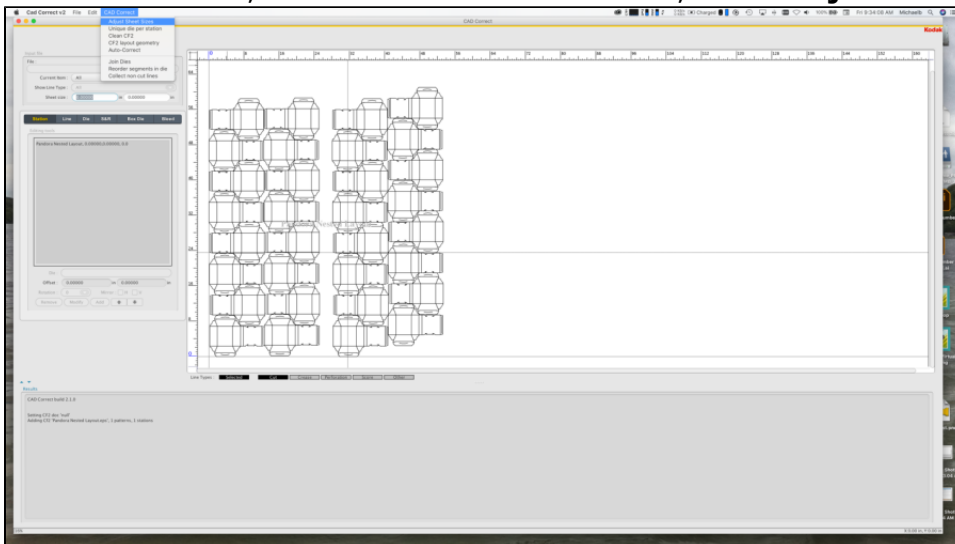
3. When the new CAD Correct job opens, from the **File** menu select **Add Die**.



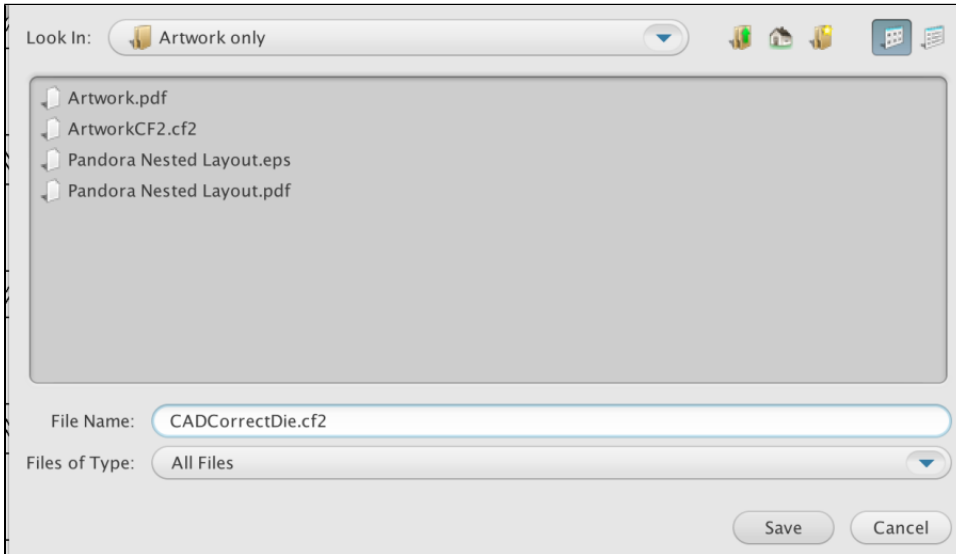
4. Import the Illustrator EPS file that you created in the [previous section](#).



5. To fit the EPS file, from the **CAD Correct** menu, select **Adjust Sheet Sizes**.



6. From the **File** menu, select **Save As** and save the file using the cf2 extension in the file name.



You have now completed the conversion.