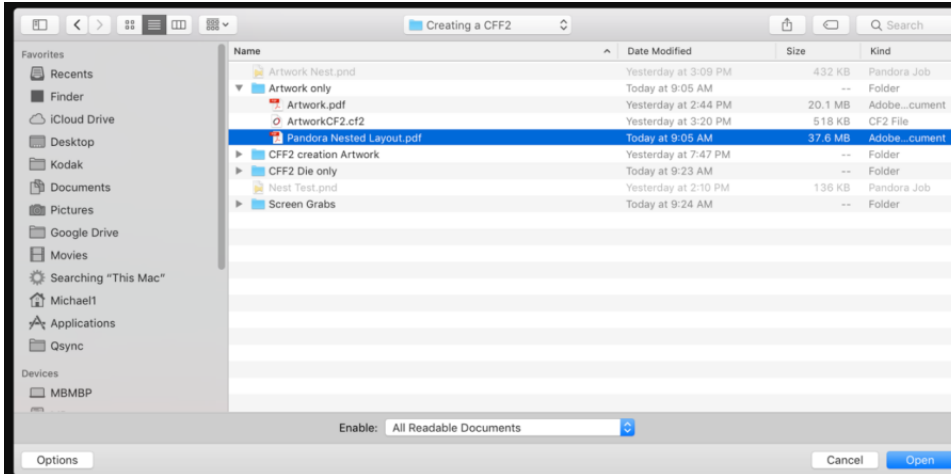


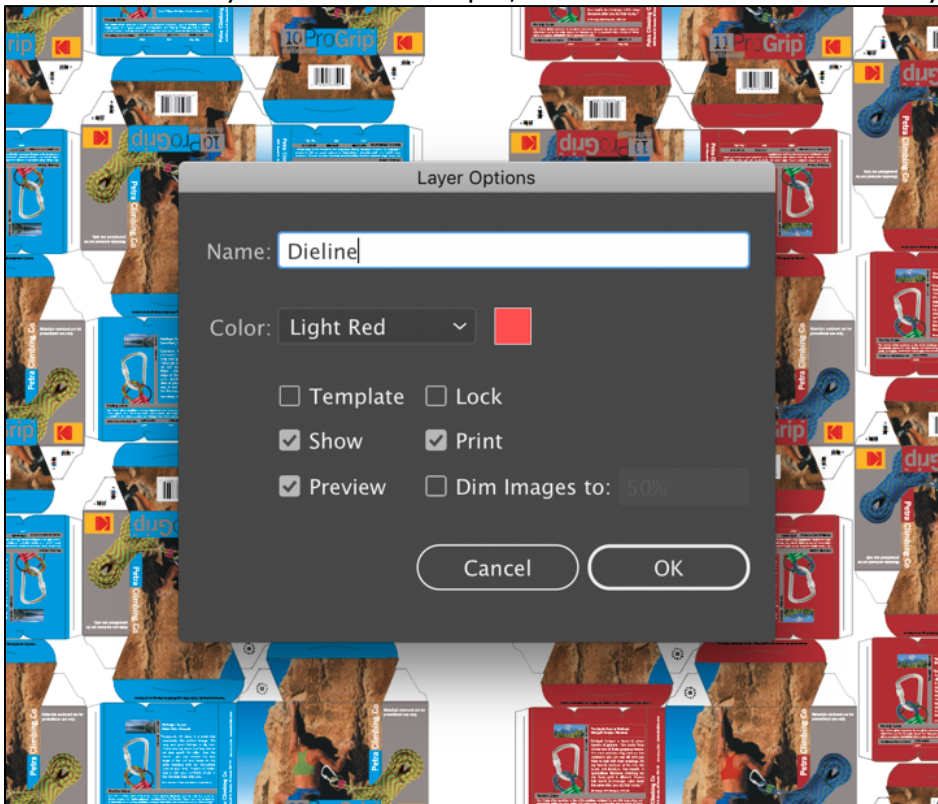
# In Illustrator, extract the dieline layer and save it as an EPS file

In the Adobe Illustrator software, perform these steps:

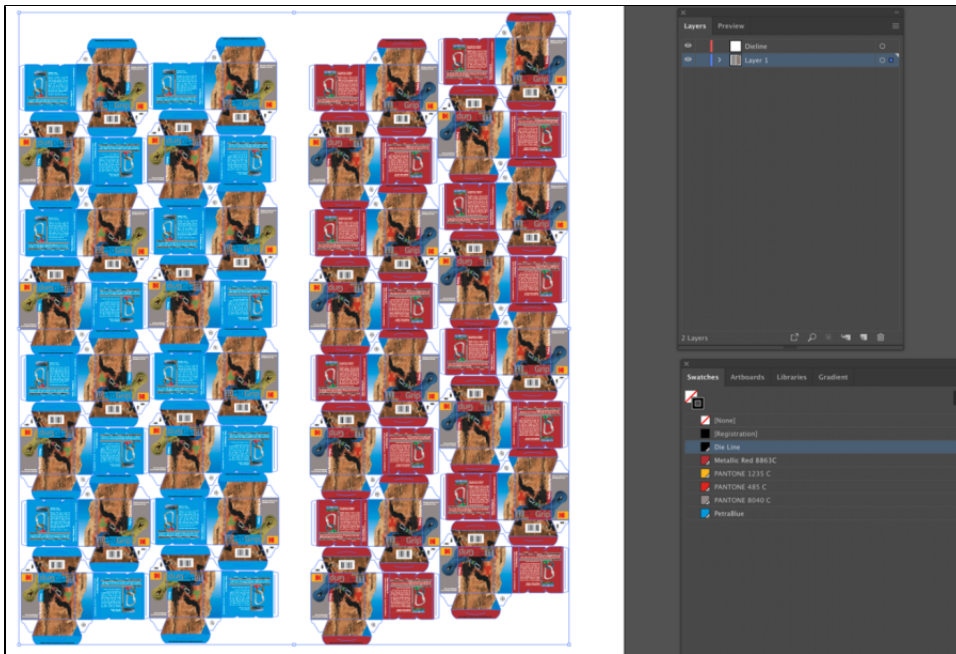
1. Launch Adobe Illustrator software and open the Pandora PDF file that you saved in the previous section.



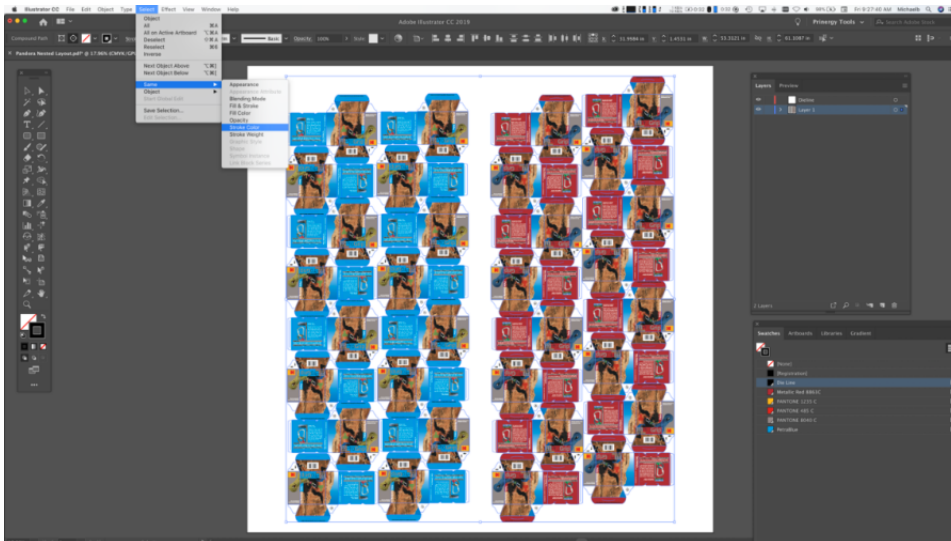
2. Create a new layer. In this example, it is named *Dieline* to identify its purpose.



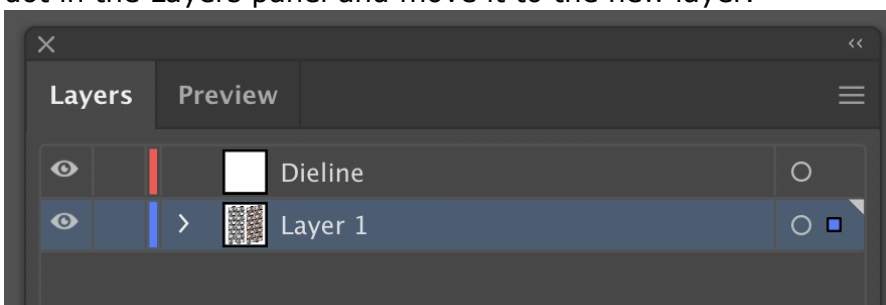
3. From the Swatches palette, select the *Dieline* color. **Note:** Based on your file, the *Dieline* color may have a different name.



4. To select all objects painted in the *Dieline* color, from the Illustrator **Select** menu, select **Same > Stroke Color**.



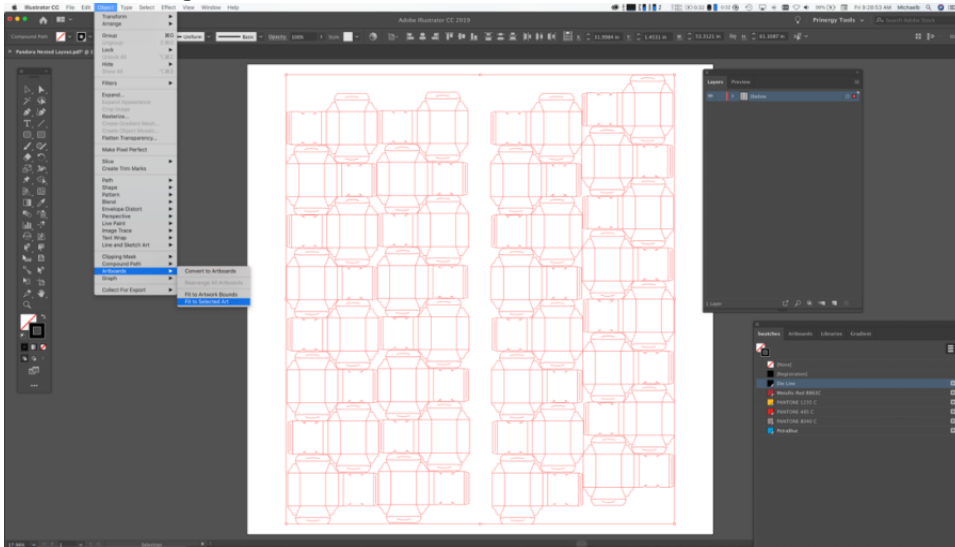
5. To move the selected *Dieline* objects to the *Dieline* layer that you created, select the blue dot in the Layers panel and move it to the new layer.



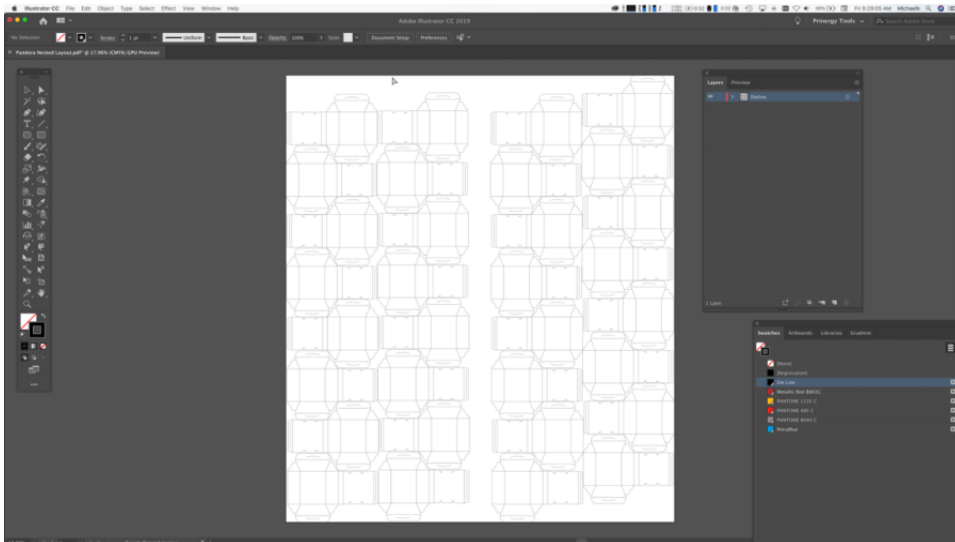
6. To confirm that all the Dieline objects were moved to the *Dieline* layer, turn off the *Dieline* layer and inspect the layout.



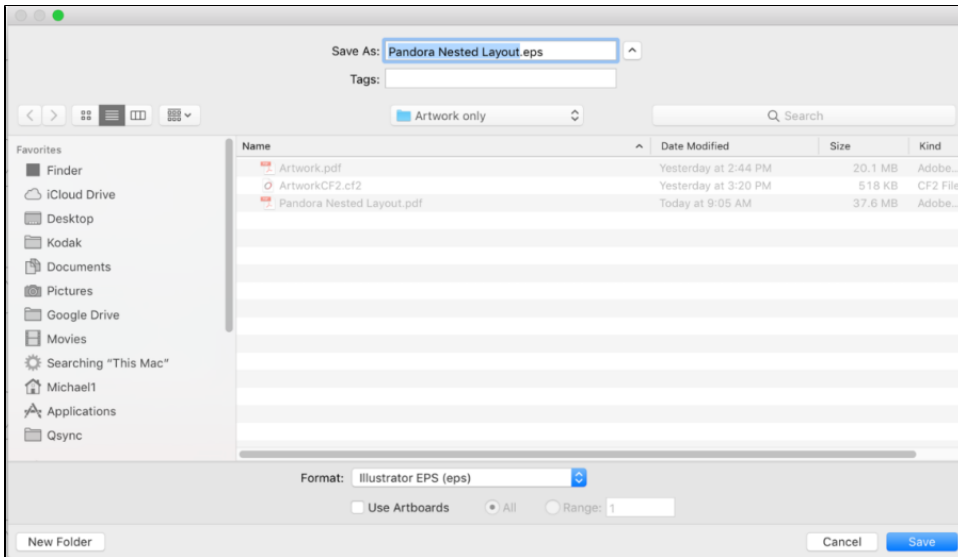
9. From the **Object** menu, select **Artboards > Fit to Selected Art**.



The result should look like this:

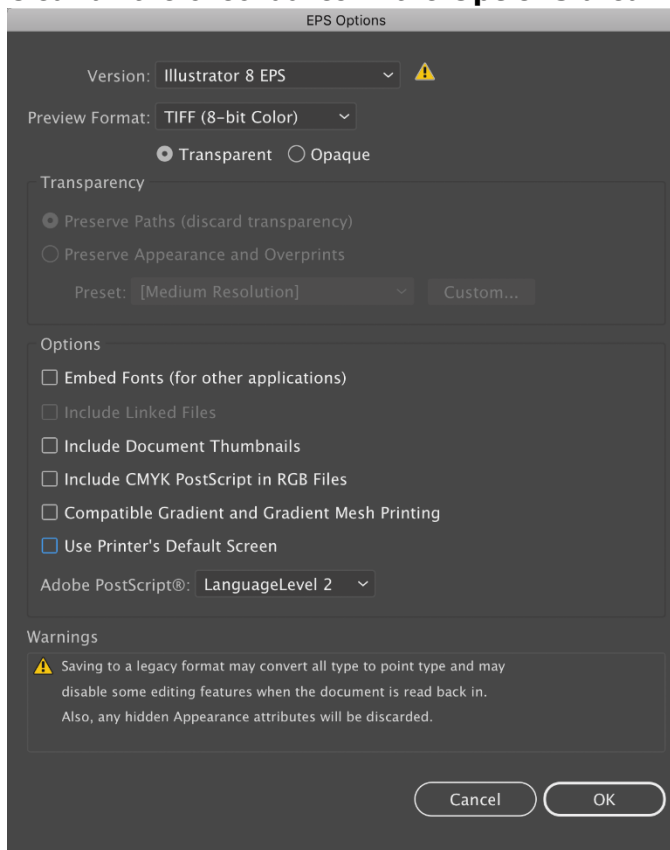


10. From the **File** menu, select **Save As**, and from the **Format** list select **Illustrator EPS (eps)**.



11. In the EPS Options dialog:

- a. From the **Version** list, select **Illustrator 8 EPS**.
- b. Clear all the checkboxes in the **Options** area.



12. Close Illustrator.