

Preps 9.0 new features, fixed bugs, and known limitations

New features and enhancements

Support for Mac OS 10.15 Catalina

Preps is now 64-bit native

KMS performance improvements for slow networks for Marks and Templates - See [Preps Best Practices and Limitations - KMS](#)

Fixed bugs

Referenced PR	Description
PREPS-16546	JDF/PJTF output crash Preps with -OUTPUT_PS_MARKSFLATS_FOR_PDF:NO
PREPS-16372	Preps fold mark starts from imposition trim in Preps 8.3 sandbox
PREPS-16365	Crop marks appear in adjacent pages bleed box
PREPS-16180 PREPS-16243	Regression: Mark anchored to Imposition with Bleed is incorrectly shifted when negative creep is applied.
PREPS-16036	StrippingParams Reader will only add 1 section of an N-Up wTurn Signature
PREPS-15909	Bottling is incorrect when pages are foot to foot for classic impositions and custom folding patterns.
PREPS-15705	Preps crashes when Autogang preset uses stock size greater than 4200 square inches.
PREPS-14621	Asymmetrical custom fold patterns are numbered incorrectly.

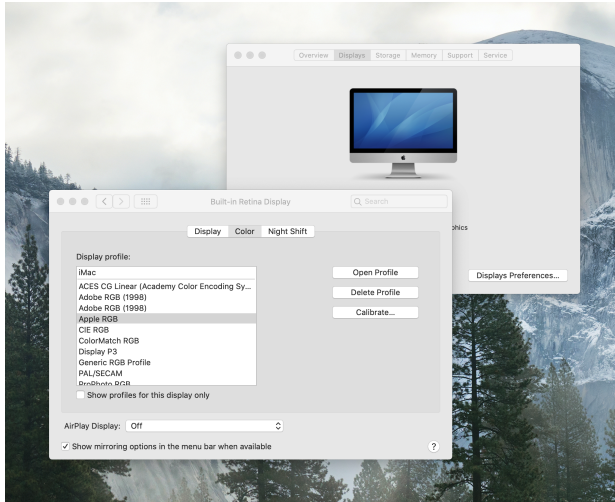
Known limitations new to Preps 9

Big Sur (Mac 11.0) Support - to come in Preps 9.0.2 Standalone

Preps 9 is not supported with MAC 11.0 Big Sur

Assembly View, Press Runs View and Textmarks are blurry on MACs with specific graphics card - FIXED in Preps 9.0.1 (coming soon)

- **Workaround for Preps 9.0.0** - change Built-in Retina Display/Color to "**Apple RGB**".



The following graphics cards are known to be affected:

Radeon Pro Vega 56
Radeon Pro 580x
Radeon R9 M390
Radeon Pro 5300
Radeon Pro 5300M/Intel UHD 630
Radeon Pro 5300 XT
Intel Iris Plus Graphics 1536 MB

Referenced PR	Description
PREPS-16542	File>>Close or Cmd + W causes Preps application to Quit - Mac Only
PREPS-16564	Can't select more than one section in Preps 9.0 build 466 (MAC only)
PREPS-16385	Preps no longer uses colorf_profiler to get Mac computer id so drop in fix no longer works.
PREPS-16567	Preps Print Job Layout Report Fails (Win only) - Regression from Preps 9.0.0 Build 444 integrated
PREPS-16594	Preps Migration Utility does not run on a 64 bit MAC
PREPS-16614	JDFs output from non-English versions of Preps do not honor SSI:Media Origin (Punch distance)(Mac)

PREPS-136	Output jdf/pjtf with ps mark flats if you add customized media ,the jdf/pjtf and their ps mark flats clockwise rotation 90 degree unexpectedly
-----------	--

Additional Known limitations

When you use "Odd" or "Even" keywords in the SmartMark Range field, the mark will be applied only for the first press run.

This happens for all marks when the mark anchor is anything except **Gutter**. See [Common settings for SmartMarks](#).

Workaround: Add `t:` before the Range keyword. For example, `t:odd` or `t:even`.

If you add a new sheet while in template editing mode, you will no longer be in template editing mode.

You can still save as template. If you duplicate an existing press run you will remain in template editing mode.

When adding press runs to a job from a template, you cannot rename a signature after it has been edited.

Once you save the job for the first time you will be able to edit the name of a signature.