

# Preps 9.0.2 new features, fixed bugs, and known limitations

**IMPORTANT (Preps 9.0.2 Standalone customers):** Due to licensing changes between Preps 9.0.1 and earlier versions of Preps, Kodak recommends that you contact your Kodak Product Support representative prior to updating to 9.0.1 or later.

**KMS performance improvements for slow networks for Marks and Templates - See [Preps Best Practices and Limitations - KMS](#)**

## New features and enhancements

### Big Sur (Mac 11.0) Support

### Fixed bugs

Referenced PR	Description
PREPS-16617	Preps 9.x JDF output no longer contains IP address in URL for JDFMarksFlat path or file path within JDFMarksFlat
PREPS-16615	Preps 9 does not populate nested SmartMark subfolders/files in a KMS Environment - WIN
PREPS-16614	JDFs output from non-English versions of Preps do not honor SSi:Media Origin (Punch distance)(Mac)
PREPS-16613	"Save As Template" causes Preps (Integrated) to hang (MAC and Win)
PREPS-16612	Saved template does not appear in the correct directory
PREPS-16609	Preps Launch Crashes when Editing a Template Imposition from Workshop - MAC only
PREPS-16598	Preps should support Mac 11
PREPS-16549	[Mac11.0]When printing a PDF, the Preps program on some machines crashes
PREPS-16265	Restricting to gutters with range field doesn't work for certain imposition pagination and fixed range numbers.
PREPS-16623	Add Warning when selecting/editing marks anchored to legacy positions in saved Templates prior to Preps 9.0.1
PREPS-16624	Retain mark properties saved with legacy anchor positions in Preps 9.0.1 - Page Head
PREPS-16620	Preps (Standalone) crashes when selecting Software Licensing Radio Button - Win 10

PREPS-13507	The current result is not correct for the mark anchored to Page Face/Binding Edge.
PREPS-13496	The rectangle & line mark anchored to page is incorrect in output files.
PREPS-16634	Preps crashes when it returns to Prinergy on Mac 11.4

Known limitations new to Preps 9

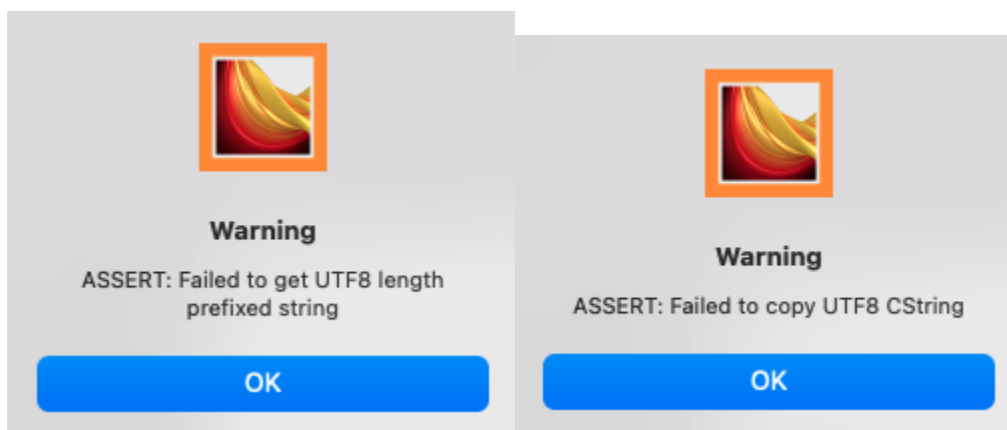
Referenced PR	Description
PREPS-16594	Preps Migration Utility does not run on a 64 bit MAC
PREPS-16591	JDF from Multipress not interpreted properly
PREPS-136	Output jdf/pjtf with ps mark flats if you add customized media ,the jdf/pjtf and their ps mark flats clockwise rotation 90 degree unexpectedly

Additional Known limitations

**Note: The M1 chipset is not officially supported at this time.**

**MAC - A warning box will pop up when printing PDF/PS/JDF/PJTF/PPF.**

This is a Preps 9.0.2 limitation only. There have been no reports of these messages causing spoilage.



**Workaround:** Click OK.

**Page Mark properties are not retained when saved with legacy anchor positions.**

This is a Preps 9.0.2 limitation for impositions using some Page Marks created/edited in previous versions of Preps.

**Workaround:** To retain legacy mark positions, add "-RETAINLEGACYANCHORMARK:YES" to the "PrepsPrinergy.cfg.template" profile located on the Prinergy server.

Instructions: [Setting Integrated Preps preferences](#) - We recommend updating with a Windows text editor (eg. Notepad ++).

### **Please Note:**

In most cases, "-RETAINLEGACYANCHORMARK:YES" is a viable solution. But, it has been reported that some Page Marks are shifted in Preps 9.0.2 and on VPS Output. For example, in one known case, Page Marks anchored to the Binding Edge on the back of the Signature with "-RETAINLEGACYANCHORMARK:YES" can inadvertently move the mark into the content area. Please check your VPS carefully. We are addressing these issues in Preps 9.5 (scheduled for Summer 2022 release).

---

**When you use "Odd" or "Even" keywords in the SmartMark Range field, the mark will be applied only for the first press run.**

This happens for all marks when the mark anchor is anything except **Gutter**. See [Common settings for SmartMarks](#).

**Workaround:** Add `t:` before the Range keyword. For example, `t:odd` or `t:even`.

---

**If you add a new sheet while in template editing mode, you will no longer be in template editing mode.**

You can still save as template. If you duplicate an existing press run you will remain in template editing mode.

---

**When adding press runs to a job from a template, you cannot rename a signature after it has been edited.**

Once you save the job for the first time you will be able to edit the name of a signature.

---

### **Preps mark preview limitation.**

Textmarks placed too close to an adjacent page may get clipped on output. The mark will not appear clipped in Preps because Preps sandbox must preview the entire image.