
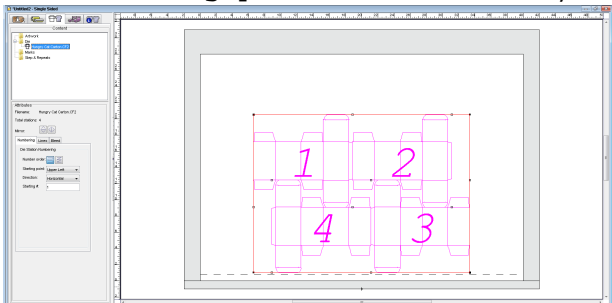


Objective 3—Import a die and artwork to the regional versioning job and position the artwork

Note: To enlarge an image so that you can view it in more detail, click it.

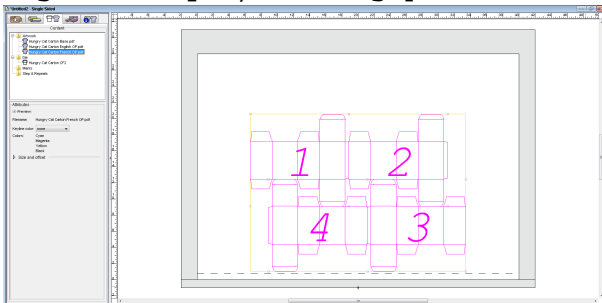
1. Perform one of the the following actions:
 - From the **File** menu, select **Import > Die**.
 - On the Pandora toolbar, click the **Import Die** icon .
2. In the Import Die dialog box, browse to the sample activity files and locate the Hungry Cat Carton folder.
3. Select the Hungry Cat Carton.CF2 file, and click **Import** (Windows) or **Open** (Mac).



Notice that the die file is automatically added to the **layout** view.

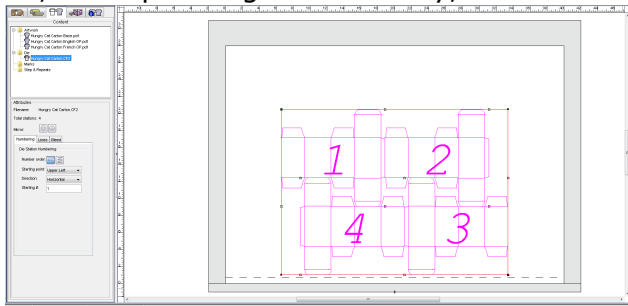
4. Perform one of the following actions:
 - From the **File** menu, select **Import > Folder**.
 - On the Pandora toolbar, click the **Import Folder** icon .
5. In the Import Folder dialog box, browse to the sample activity files, locate the Versioning folder and click **Import** (Windows) or **Open** (Mac).

The Content tab should now list Hungry Cat Carton Base.pdf, Hungry Cat Carton English OP.pdf, and Hungry Cat Carton French OP.pdf.

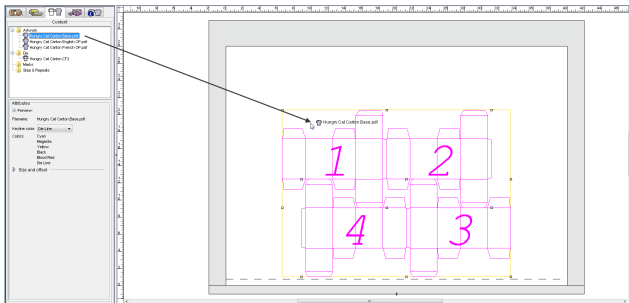


6. In the layout, use one of these methods to select the entire die. Confirm that you selected the entire die instead of only one die station.
 - In the **Content** tab, click the die file.
 - Or, select the line that encompasses all four individual die stations.

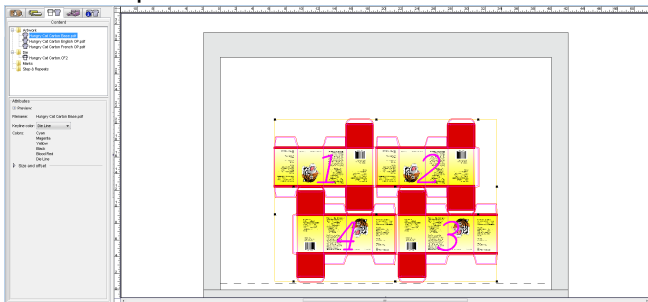
- Or, while pressing the Shift key, select each individual die station.



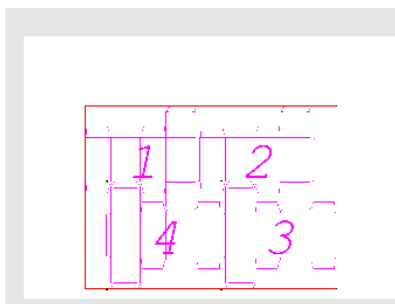
7. In the **Content** tab, select the Hungry Cat Carton Base.pdf artwork file and drag it to the selected die.



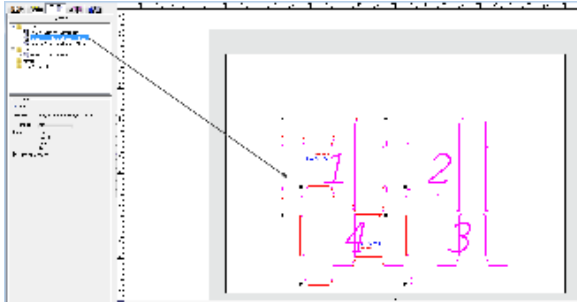
8. View the placed artwork.



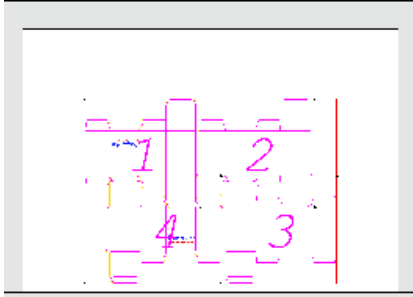
9. From the **View** menu, select **Hide Artwork**.
10. While pressing the Shift key, select die stations 1 and 4.
You can also select die stations by drawing a marquee around them.



11. In the **Content** tab, select the Hungry Cat Carton English OP.pdf artwork file and drag it to the selected die stations.



12. From the **View** menu, select **Hide Artwork**.
13. While pressing the Shift key, select die stations 2 and 3.



14. In the **Content** tab, select the Hungry Cat Carton French OP.pdf artwork file and drag it to the selected die stations.

