

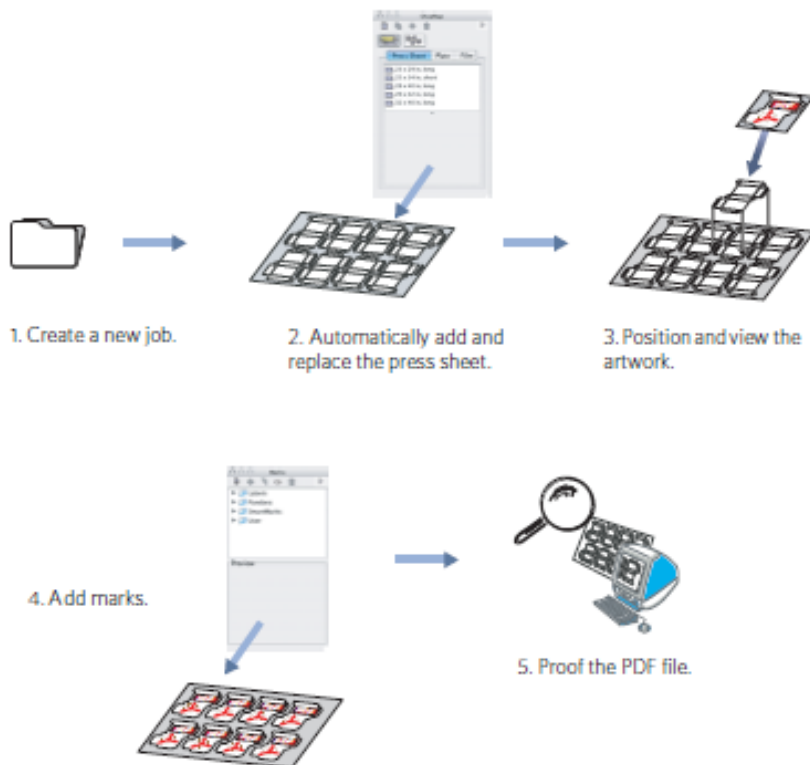
Activity 15: Create Automatically Sized Substrates

Who should complete this activity

This activity should be completed by anyone who plans to use Pandora regularly.

Why you should complete this activity

This activity demonstrates how you create default settings in the Preferences dialog box, and always have Pandora create substrates based on these settings. This activity also demonstrates how you set up Pandora to prompt you each time you add a job element (die, plate, or film) to the layout.



Recommended reading

[Pandora User Guide](#) for your version of Pandora software

- Section on Automatically sizing substrates
- Section on Automatically sizing Flexo plates

Time required to complete this activity

20 minutes

What you'll need

For this activity [locate](#) these files:

- Pandora Activity Files\Hungry Cat Carton\Hungry Cat Carton.CF2
- Pandora Activity Files\Hungry Cat Carton\Hungry Cat Carton 1.pdf

What you'll learn

- Objective 1—Create a new job and provide job information
- Objective 2—Automatically add and replace the substrate
- Objective 3—Position and view the artwork
- Objective 4—Add marks to the job
- Objective 5—Save and output the job as a PDF file
- Review what you've learned