
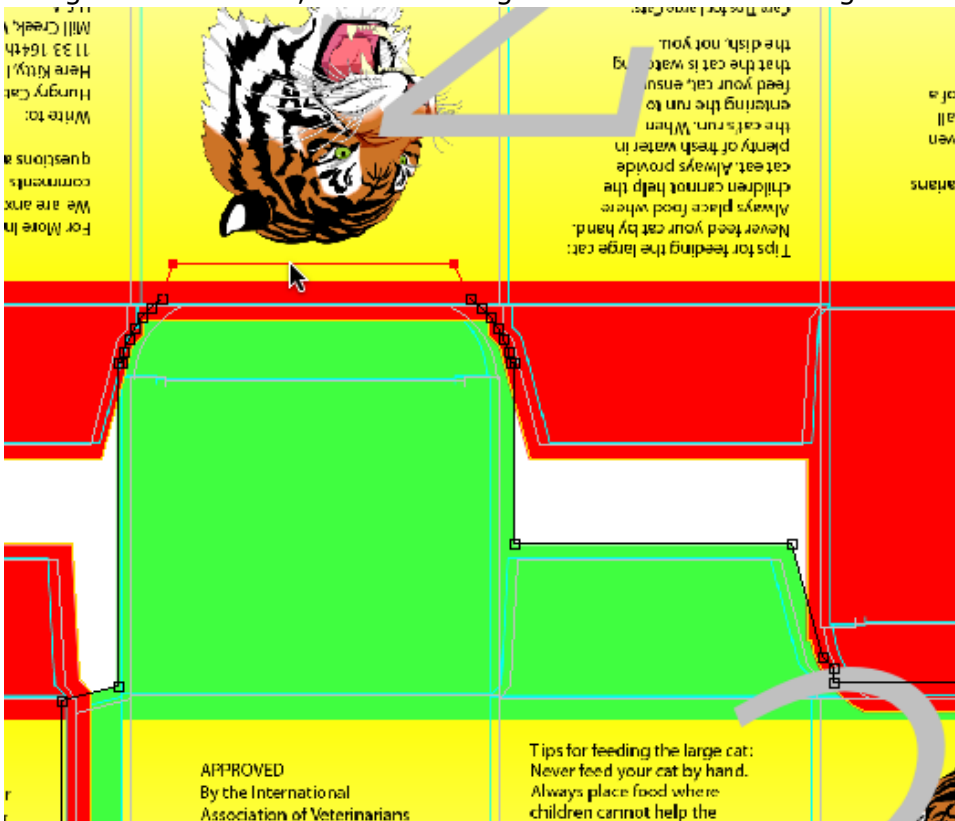


Objective 6—Create a manual bleed path

1. Zoom in on die station 2 and 3.
Notice the tab on the left.
2. Select the **Bleed** tool .
3. Click the dieline of die station 3.
4. Using the **Bleed** tool, click and drag on the die line to change the shape.



5. While pressing the Option key (on an Apple Macintosh computer) or the Alt key (on a Microsoft Windows-based computer), add or delete points on the bleed path to create a bleed shape that fits the requirements.
6. Once you have manually changed the bleed, save and close the job.