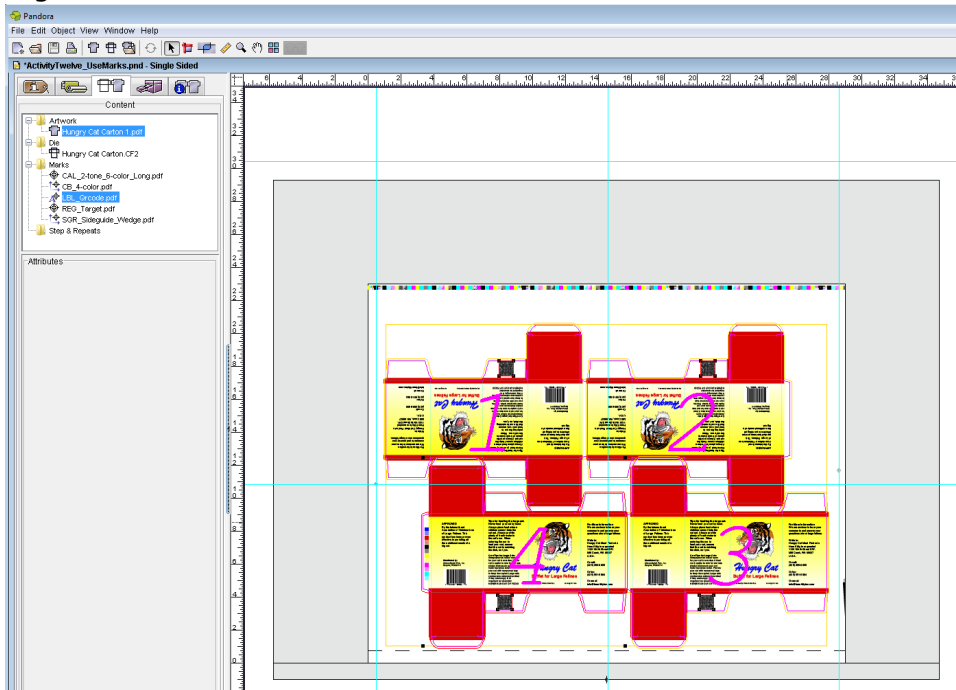


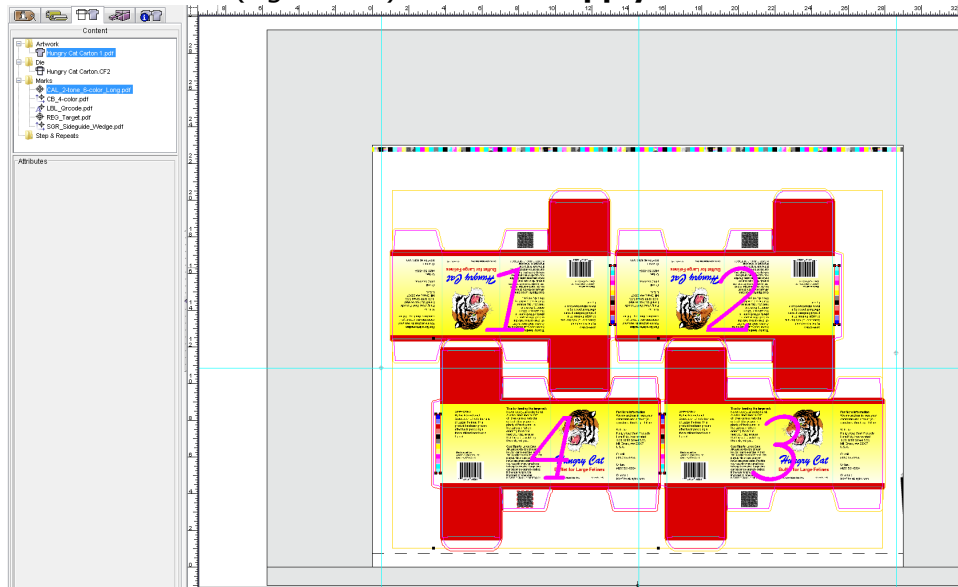
Objective 2—Bind marks to artwork

1. Perform one of the following actions:
 - In the **layout** view, select the LBL_QRcode.pdf mark.
 - In the **job properties** view, on the **Content** tab, select the LBL_QRcode.pdf mark.
The artwork appears selected in the layout view.
2. In the Attributes dialog, in the **Text** box, change 34567 to www.kodak.com
3. Press Shift and select the artwork on which you've placed the mark.
4. Perform one of the following actions:
 - From the **Object** menu, select **Apply to All**.
 - Command-click (right-click) and select **Apply to All**.The mark binds to all instances of artwork (based on the name of the artwork) regardless of their location or rotation.



5. Repeat the binding procedure for the CAL_2-tone_6-color_Long.pdf mark.
Perform one of the following actions:
 - In the **layout** view, select the CAL_2-tone_6-color_Long.pdf mark.
 - In the **job properties** view, on the **Content** tab, select the CAL_2-tone_6-color_Long.pdf mark.
6. Press Shift and select the artwork on which you've placed the mark.
7. Perform one of the following actions:
 - From the **Object** menu, select **Apply to All**.

- Command-click (right-click) and select **Apply to All**.



8. From the **File** menu, select **Save**.