
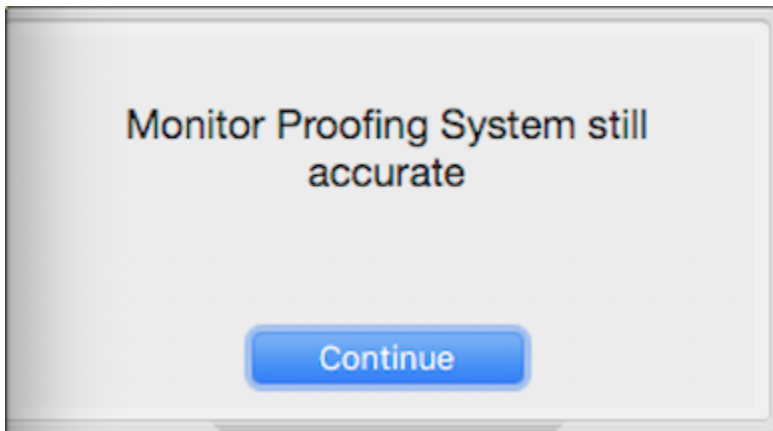


# Performing the monitor check

When you set the calibration interval to a value that is other than one day, you can run the Monitor Check at a frequency that fits your schedule. It is intended to be faster than a full calibration and will ensure that the monitor is still showing color accurately prior to your next calibration when expiry has occurred.

1. At the Dock, click the Matchprint Virtual folder icon .
2. Select **MVCalibrator**.
3. In the MV Calibrate window, select **MONITOR CHECK**.
  - a. To start the monitor check, click **Go**.
  - b. Follow the steps as prompted by the software for initializing the colorimeter and performing the quick check.
  - c. When the check completes successfully, the following message appears:



**Note:** If the Monitor check failed, click **Continue**. In the MV Calibrate Window, select **CALIBRATE**.