
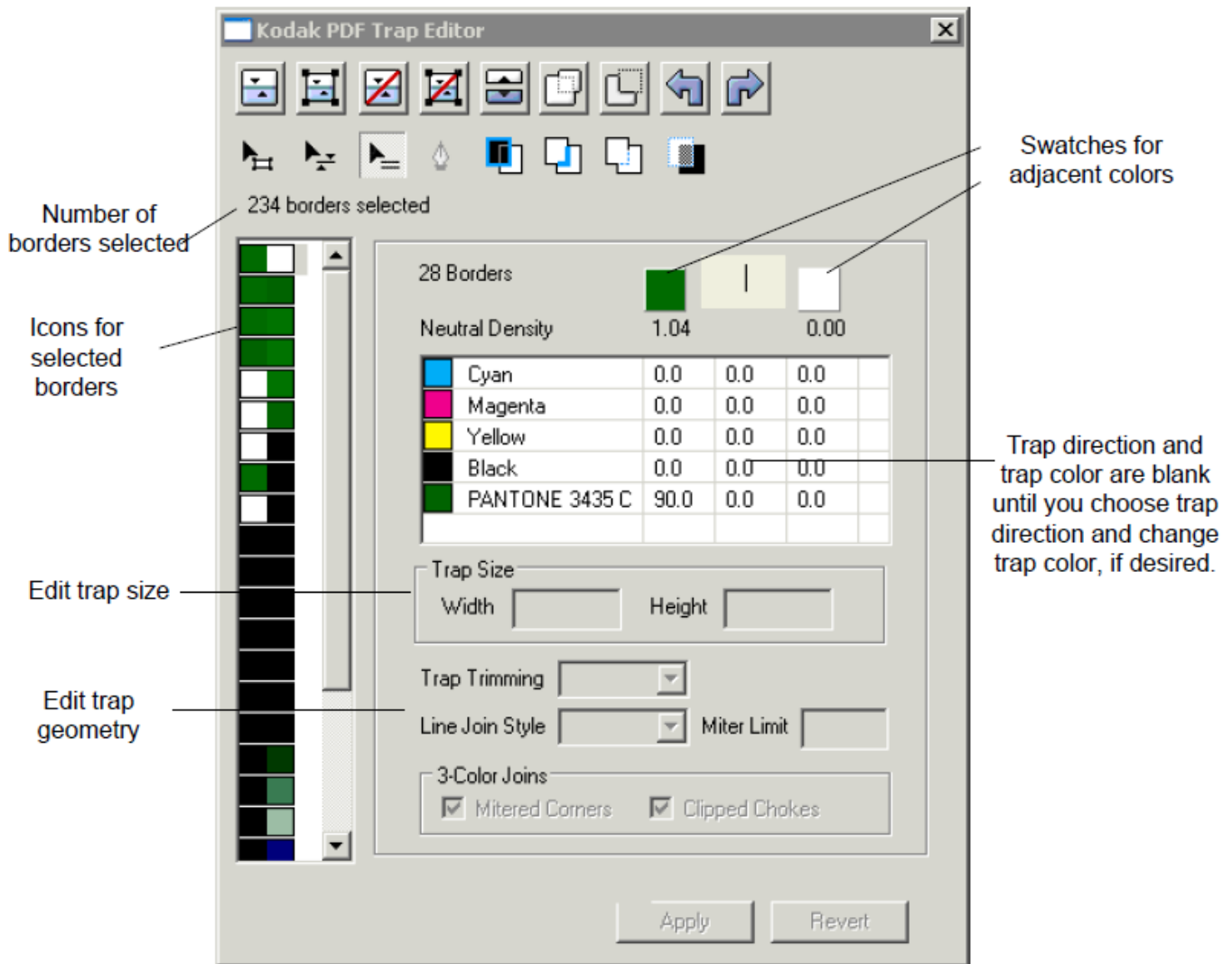


Trapping a border using the Properties Editor

1. From within PDF Trap Editor, select a border.
2. Click the border's icon in the left pane of the Properties Editor.
3. Click the border's trap swatch  button to cycle through possible trap direction arrows: left, right, or centerline. These indicate on which side of the border the trap will be placed.
Select a trap direction.
The trap swatch shows the trap color.
4. The trap's color separations appear in cells in the trap color column in the color separations table and may contain elements that can be changed.
5. For **Trap Size**, enter trap **Width** and **Height** values.
6. You can also specify:
 - **Trap trimming**
 - **Line join style**: Bevel, Miter, or Round
 - **Miter limit**
 - **3-color joins**: Mitered Corners and/or Clipped Chokes
7. Click **Apply**.



See Also

[Editing trap color](#)
[Spreading or choking a complex bitmap](#)
[Using advanced trapping functions](#)