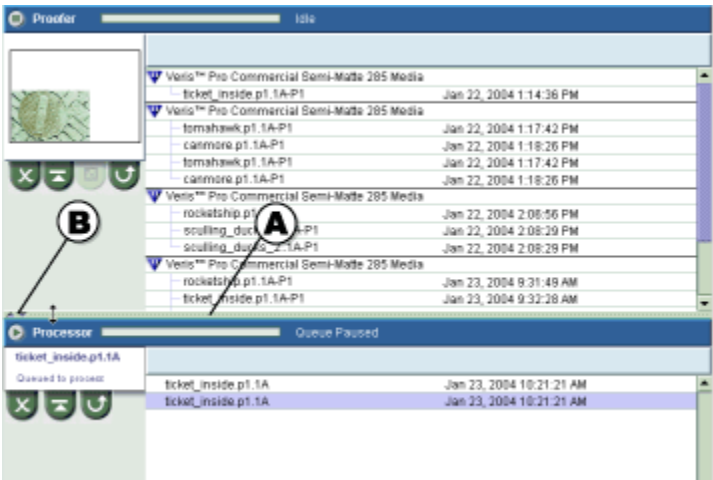


# Adjusting the size of a queue

If you would like to view more items in one of the two queues, you can adjust the size of the queue with the slider bar. You can use the slider bar to maximize a queue or to slightly modify the size of each queue. These controls do not affect the number of items in a queue, just the number of visible items.



1. In the Proofer Viewer, click the Queues [blocked URL](#) button.

Perform one of the following actions:

To	Do this
Maximize a queue	From the slider bar (A), click the <a href="#">blocked URL</a> button (B) to maximize the Processor queue, or the <a href="#">blocked URL</a> button (B) to maximize the Proofer queue.
Slightly adjust the size of a queue	Click and drag the slider bar (A) up or down

**Parent topic:** [Using the Queues window](#)