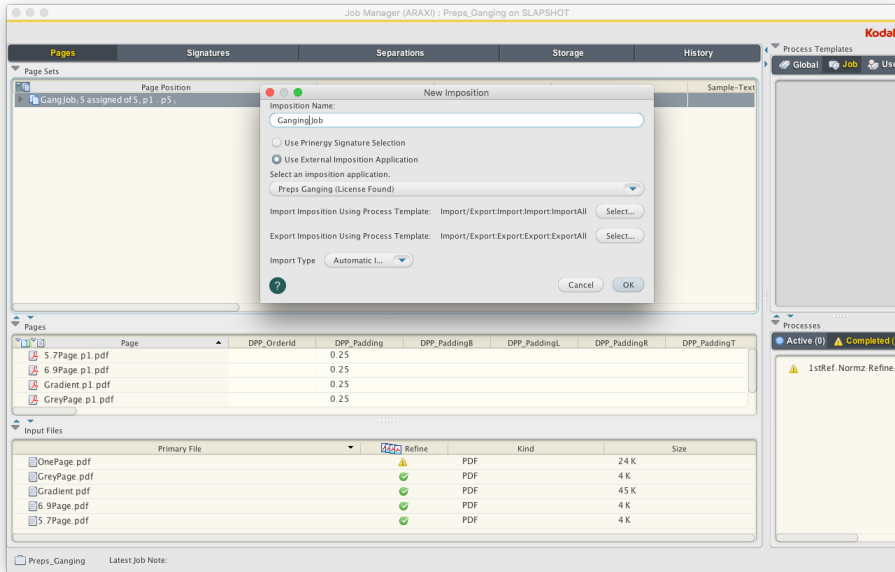


Creating a layout with integrated Preps Ganging

Create a layout using Preps Ganging integrated with Prinergy in order to have Prinergy automatically import the layout.

1. Refine your files and create a populated page set in your Prinergy job.
2. In Job Manager, click **File > Create New Imposition**.
3. In the New Imposition dialog box, in the **Imposition Name** box, type an imposition name.
4. Click **Use External Imposition Application**.
5. In the **Select an imposition application** box, select **Preps Ganging**, and click **OK**.



6. In the New Imposition Details dialog box, in the **Use Existing Page Set** box, select your populated page set, and click **OK**.
7. In the Preps Ganging software, assign your media, stock, and marks and arrange your pages as needed on your press sheet.
The number of pages on your layout must match the total number of pages in your populated page set.
For more information about Preps Ganging procedures, see the Preps Ganging documentation.
8. From Preps, select **File > Save and Return to Prinergy**.

For a new imposition, Preps creates the imposition file (JDF) and marks files, and Prinergy automatically imports the imposition file and marks files. The imported Preps Ganging imposition files are saved in the <job folder>\System\ImpositionPlans folder. The Preps job, JDF, and marks files are saved in the <job folder>\TransientLayouts\<client computer name> folder.