

# Use Preflight+ to verify that a print-ready PDF input file is GWG 2012 compliant

In this activity, you will use the Preflight+ option to verify that a print-ready PDF file supplied is compliant with GWG 2012 specifications, and to fix compliance issues.

- [Create a job](#)
- [Copy an input file to the job folder and add input files to the job](#)
- [Refine the input file using the GWG 2012 preflight+ profile](#)
- [Review the input file preflight report](#)
- [Review the refined PDF preflight report](#)

## Create a job

1. If it is not already open, start Prinergy Workshop.
2. In Job Finder, right-click your main group, and choose **New Job**.
3. Type the job name `XX_Preflight_Plus` (where `<XX>` represents your initials).
4. Click **Create**.
5. Minimize the Job Manager window.

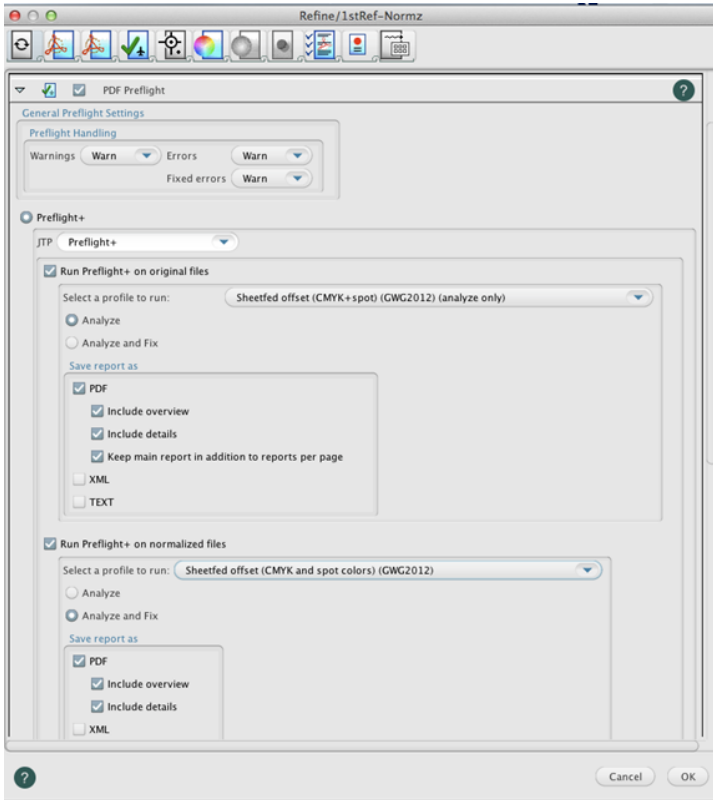
## Copy an input file to the job folder and add input files to the job

1. From your workstation, locate: `Prinergy Activity Practice Files / Act_04_Prepare_print-ready_PDF / Input File`
2. Restore Job Manager.
3. Open the `Input File` folder.
4. Drag the `<Your Initial>_KDK_Pkg_ONEmag_Aug2011_Print.pdf` file that you created earlier in Activity 4 to the Job Manager's **Input Files** area.
5. In the Add Input Files dialog box that appears, under **Options**, clear the **Process Selected Files Using Process Template** check box.
6. Click **OK**.  
Your file is copied to the `UserDefinedFolders` folder.
7. Minimize the Job Manager window.

## Refine the input file using the GWG 2012 preflight+ profile

1. In the **Input Files** pane, right-click `<Your Initial>_KDK_Pkg_ONEmag_Aug2011_Print.pdf`, and select the process template: **Refine > Refine > 1stRef-Normz**.
2. In the Start Process dialog box, click the **Edit Process Template** button.
3. In the Edit Process dialog box, click **Edit Process Template**.
4. Place a check mark beside **PDF Preflight** and open the section.
5. Make sure that the **Preflight+** option is selected.
6. In the **Warnings** list, select **Warn**.
7. In the **Errors** list, select **Warn**.
8. In the **Fixed Errors** list, select **Warn**.
9. In the **Run Preflight+ on original files** area, in the **Select a profile to run** list **Prepress (analyze only)** group, select the **Sheetfed offset (CMYK and Spots) (GWG 2015) (analyze only)** profile.  
**Note:** In Prinergy versions earlier than 8.0, the profiles may have **2012** in the name (instead of **2015**).
10. Select the **Analyze** option.
11. In the **Run Preflight+ on normalized files** area, in the **Select a profile to run** list **Prepress** group, select the **Sheetfed offset (CMYK and Spots) (GWG 2015)** profile.

12. Select the **Analyze and Fix** option.



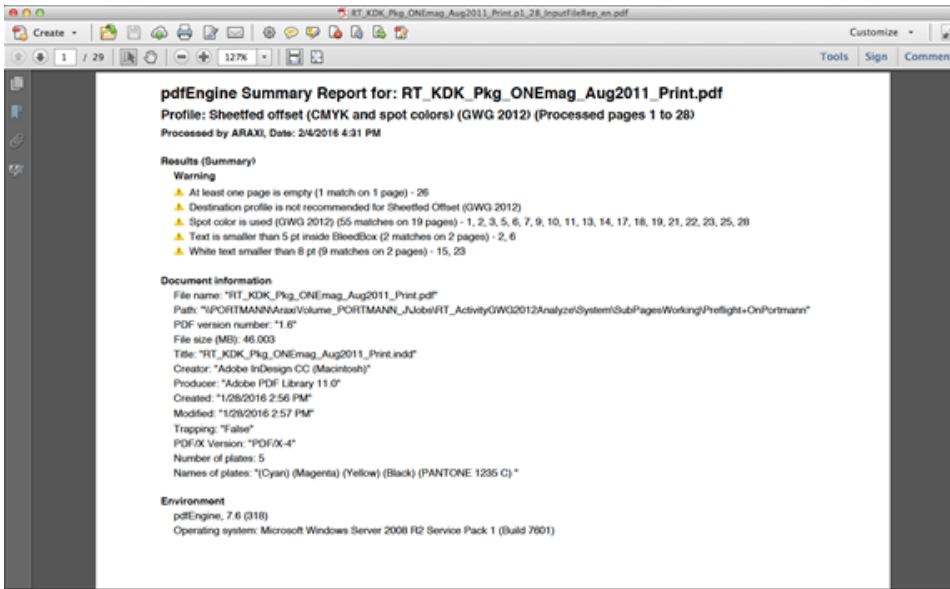
13. Click **OK**.

14. In the Start Process dialog box, click **OK**.

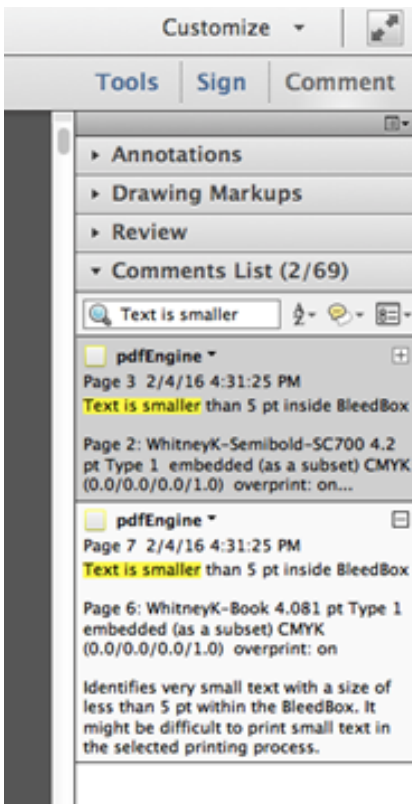
**Note:** Editing this process template is temporary. When you modify a process template in this way, any changes to the process template are discarded when the process is complete. The changes do not affect the original process template and are not saved with the job. You cannot redo the same process without making the same changes to the process template again.

## Review the input file preflight report

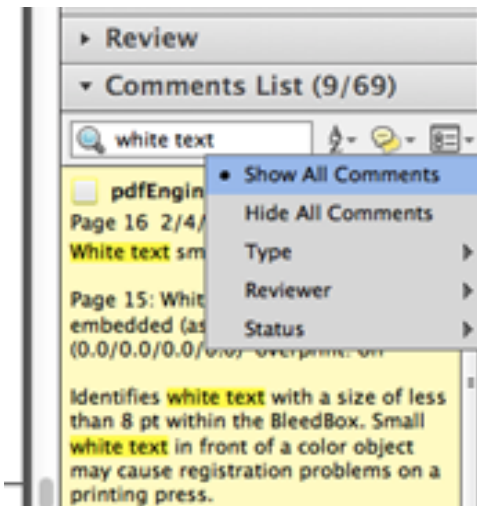
1. Review the issues identified during the preflight process.
2. In the **Pages** pane, select all the pages, and from the **Jobs** menu, select **Preflight+ Input File Report Viewer**.
3. View the overview summary of issues found on page 1 of the report.



4. In Acrobat, open in the **View** menu and select **Comment >Review**.
5. Under **Comments List**, in the **Find** box, type `Text is smaller`.



6. Click a comment to view the page content the warning was generated for.
7. Under **Comments List**, in the **Find** box, type now `White text`.
8. Click a comment to view the white text on page 15.
9. Select the **Hide All Comments (Mac keyboard shortcut: Command + Shift + 8)** setting to see the text generating the warning more clearly. Then select the **Show All Comments (Mac command +8)** to return to the comments list.



### Notes:

- The generated Preflight warnings illustrate that creating a print-ready PDF with GWG recommend application settings is not a guarantee for a compliant PDF. For example 5 point text is non-complaint, but the preset will not remove or enlarge your type for you (for obvious reasons). Also you can have spot colors in your document, but you must explicitly set those to convert to process in the InDesign output window (the preset cannot convert to process for you).
- The following warning message might appear **Destination profile not recommended for Sheetfed Offset (GWG 2012)** if you used the **GRACo12006\_Coated1v2 as the output intent** profile in Activity 4. This warning message maybe ignored as long as the output intent profile is recommended by your printer or local printing association.
- To detect print problems before generating PDF/X4-P out of Adobe InDesign it is recommended that you use the InDesign **Live Preflight** tool when designing.
- If the PDF/X output intent ICC profile version used is greater than 2, a preflight error message is generated because certain industry standards prohibit the use of latest ICC profile versions. Prinergy workflow supports the use of version 4 ICC profiles, therefore the ICC version 4 check can be edited.

## Review the refined PDF preflight report

1. Review the issues identified during the preflight process.
2. In the **Pages** pane, select all the pages, and from the **Jobs** menu, select **Preflight+ Refined File Report Viewer**.

### 3. Review the Fixups and Warnings in Preflight+ report for the refined pages.

