

## Kodak DigiCap NX Patterning - Combining DigiCap NX Patterns

### Overview

A Kodak DigiCap NX-enabled TIFF Assembler Plus V3.1 layout applies a single DigiCap NX pattern to all files in the layout. In some cases you may want to image a sheet of Thermal Imaging Layer with more than one pattern. While TIFF Assembler Plus V3.1 does not support doing this in a single step from a single layout, you can use the software to create a layout of files with different DigiCap NX patterns, as described in this document.

The procedure outlined here is a temporary work-around. The next version of TIFF Assembler Plus will support expanded and simplified functionality for applying different patterns to different elements in a layout.

Implementing this setup, or a variation of it, requires familiarity with TIFF Assembler Plus functionality. For more information, in the **Help** menu, access the TIFF Assembler Plus User Guide.

Outputting a single file containing individual files with different DigiCap NX patterns requires two steps:

1. Applying patterns to the individual files
2. Assembling the files in a layout for output

**Note:** Files with DigiCap NX cannot be exposed simultaneously on a single imaging pass with non-DigiCap NX files.

### Applying DigiCap NX patterns to individual TIFF files

For each DigiCap NX pattern that you use, set up a hot folder. The hot folder applies the DigiCap NX pattern to the screened 2400 x 2400 dpi input and saves a 4800 x 2400 dpi file with DigiCap NX to an output directory, where it can later be accessed for assembly.

### Creating layout (.cta) files

The layout file (.cta) associated with each Hot Folder determines which DigiCap NX pattern is applied. The layout files can be generated by creating a New Layout using an existing layout preset, editing the layout parameters as required, and saving a unique layout file for each DigiCap NX pattern. The layouts do not need to be maintained as separate layout presets.

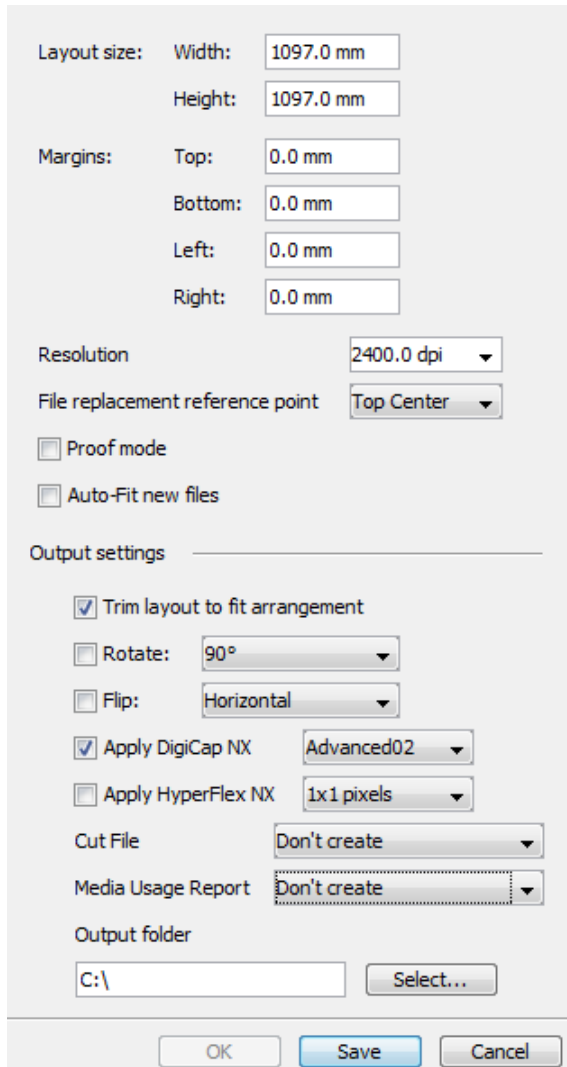
Create a layout file for each pattern you wish to apply. Save each layout file using the pattern name.

Suggested layout parameters for the layout files:

- **Layout Size:** Set Height and Width to the maximum TIFF file size you normally use
- **Margins:** 0
- **Resolution:** 2400 dpi
- **Trim layout to fit arrangement:** Selected

- **Apply DigiCap NX:** Enabled with desired pattern selected from drop down list
- **Apply HyperFlex NX:** Optional, enable if using HyperFlex NX
- **Cut File:** Don't create
- **Media Usage Report:** Don't create
- **Output Folder:** (This is not used by the hot folder, so anything here is fine.)

Figure 1: Example layout setup to apply Advanced02 DigiCap NX pattern



The screenshot shows a settings dialog box with the following fields and options:

- Layout size:** Width: 1097.0 mm, Height: 1097.0 mm
- Margins:** Top: 0.0 mm, Bottom: 0.0 mm, Left: 0.0 mm, Right: 0.0 mm
- Resolution:** 2400.0 dpi
- File replacement reference point:** Top Center
- Proof mode
- Auto-Fit new files
- Output settings:**
  - Trim layout to fit arrangement
  - Rotate: 90°
  - Flip: Horizontal
  - Apply DigiCap NX: Advanced02
  - Apply HyperFlex NX: 1x1 pixels
  - Cut File:** Don't create
  - Media Usage Report:** Don't create
  - Output folder:** C:\ (with a Select... button)

Buttons at the bottom: OK, Save, Cancel.

## Setting up hot folders

Create a hot folder for each DigiCap NX pattern that you want to apply. Name the hot folder for the pattern.

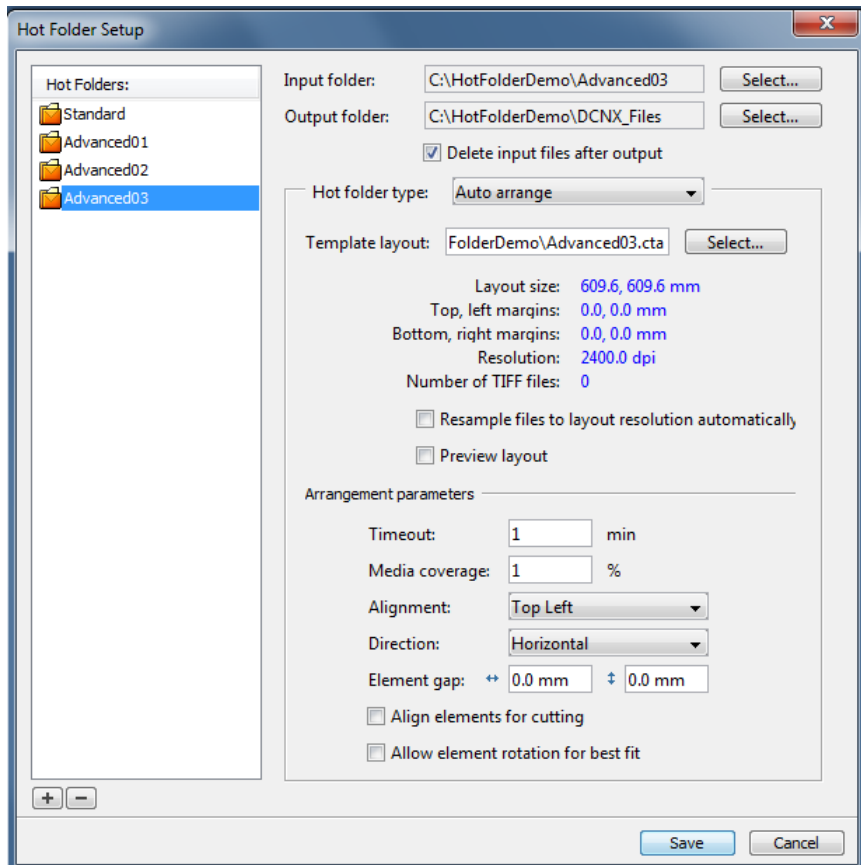
Suggested parameters for the hot folders:

- **Input Folder:** On the workstation, create a folder for each DigiCap NX pattern that you want to apply. Name each folder for the pattern. In the Hot Folder Setup window, select the folders that you created as the input folder.
- **Output Folder:** On the workstation, create a folder to collect the output after DigiCapNX is applied. Name the folder "DCNX Files", or something similar. Select this folder as the output folder.

- **Hot Folder Type:** Auto arrange
- **Template Layout:** Select the layout (.cta) file that corresponds to the Hot Folder pattern
- **Timeout:** 1 min
- **Media Coverage:** 1%

With these settings, a file dropped in the Input Hot Folder will immediately have the DigiCap NX pattern applied, and then be saved to the Output folder. (If the file is very small and takes up less than 1% of the layout area as defined in the .cta layout file, a one-minute timeout occurs.)

Example of hot folder set up to apply Advanced03 DigiCap NX pattern



**Note:** Marks added to a file should have the same DigiCap NX pattern as the image content. If you are using hot folders, go to **Edit > Preferences > Marks setup** and select **Automatically apply selected marks**.

The method described here uses hot folders to apply DigiCap NX patterns. A limitation to using hot folders is that input files cannot be selectively rotated to maximize layout efficiency. An alternative method that enables selective rotation is to create a layout preset for applying DigiCap NX patterns, and output to a workstation directory. You can create a separate layout preset for each pattern, or maintain a single layout and edit the DigiCap NX pattern parameter on a job-by-job basis. You can use the Element Rotate functionality to rotate the input file after adding it to the layout. The suggested parameters for these layouts are the same as those used for the hot folder method.

## Assembling and outputting files with DigiCap NX

Create dedicated layout presets for assembling files with DigiCap NX already applied. Use the layout presets to create new layouts for assembly and output.

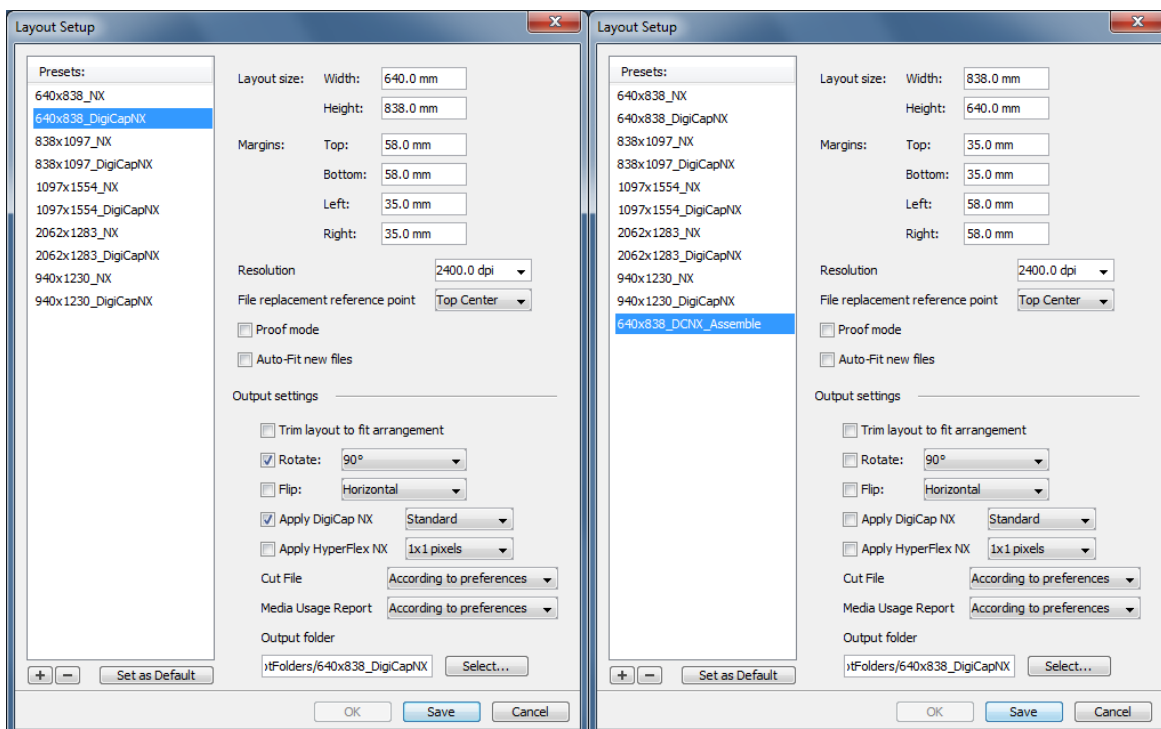
Files with DigiCap NX applied have a 4800 x 2400 dpi resolution. They cannot be rotated when they are placed in a layout, nor can the layout apply rotation on output. Additionally, output from the assembly layout must be directed to a DigiCap NX-compatible Production Manager Hot Folder for proper imaging.

## Creating layout presets for assembling files with DigiCap NX

Use the existing layout presets for DigiCap NX imaging as templates to create the layout presets for assembling files with DigiCap NX and outputting the files. To adapt an existing layout preset that has the Rotate function enabled:

1. Select an existing DigiCap NX layout preset, and click the + icon.
2. Rename the new layout with a unique name that indicates it is for assembling files with DigiCap NX.
3. In the **Layout** area, swap the **Height** and **Width** values.
4. In the **Margins** area, swap the **Top** and **Bottom** values with the **Right** and **Left** values.
5. Clear the **Rotate** checkbox.
6. Clear the **Apply Digi Cap NX** checkbox.
7. Click **Save**.

Figure 2: Examples of pre-installed layout preset with Rotation and the edited version for assembling DCNX files



## Adapting an existing layout preset without Rotate enabled

To adapt an existing layout preset without **Rotate** enabled:

1. Select an existing DigiCap NX layout preset, and click the + icon.
2. Rename the new layout with a unique name that indicates it is for assembling files with DigiCap NX.
3. Clear **Apply Digi Cap NX**.
4. Click **Save**.

**Note:** Though the layouts are setup for a resolution of 2400 dpi, they accept 4800 x 2400 dpi files. However, 4800 x 2400 dpi and 2400 x 2400 dpi files cannot be mixed on the same layout.

**Note:** If **Apply DigiCap NX** is selected in the layout used for assembling files with DigiCap NX, DigiCap NX will be applied again on output. The resulting file will be 9600 x 2400 dpi and will fail at the imaging stage. However, you can direct a layout used for assembling files with DigiCap NX to a Production Manager Hot Folder that has the **Perform DigiCap NX** option enabled. The Production Manager Hot Folder recognizes that the input file is 4800 x 2400 dpi and automatically disables DigiCap NX.

### Using layout presets for assembly and output

The special layout presets created for assembling files with DigiCap NX patterns work like other layouts.

1. Create a new layout using the layout preset.
2. On the **Files** Tab, click the + icon, and navigate to the folder that contains the 4800 x 2400 dpi files with DigiCap NX applied.
3. Select the required files.
4. Arrange the selected files in the layout.
5. Click the **Output** icon.

**Note:** When files with DigiCap NX applied are added to a layout, marks are not applied automatically when the **Automatically apply selected marks preference** option is selected. Add marks when DigiCap NX is applied.